



**FIELDQUIP**<sup>TM</sup>

family business, Australian owned ...smarter gear ...smarter care



# QUADTOPPER SLASHER



**OWNER/OPERATOR MANUAL  
SPARE PARTS LIST**

## Contents

DESCRIPTION.....	4
TO THE DEALER.....	5
TO THE OWNER.....	5
GENERAL INFORMATION.....	5
DECALS.....	6
SAFETY RULES & ACCIDENT PREVENTION.....	7-9
ATTACHING TO THE IMPLEMENT.....	10
CUTTING HEIGHT ADJUSTMENT.....	10
DAILY PRE-OPERATION CHECKLIST.....	10
OWNER SERVICE.....	11
BLOCKING METHOD.....	12
CUTTER BAR AND BLADE SERVICING.....	12
TROUBLE SHOOTING.....	13
SPARE PARTS FOR QUADTOPPER.....	14
PRE-DELIVERY CHECKLIST.....	15
DEALER DELIVERY INFORMATION.....	15
WARRANTY.....	16
WARRANTY PROCEDURE.....	16
PRE DELIVERY CHECKLIST.....	17
PRODUCT CHECKLIST – DELIVERY.....	17
DELIVERY, WARRANTY AND SAFETY ACKNOWLEDGEMENT.....	18

# Fieldquip Quad Topper Slasher

## Operator Instructions and Parts List

Dear Customer,

We take this opportunity of welcoming you as the owner of a Fieldquip Quad Topper Slasher. We want your Lifestyle Quad Topper Slasher to be the most efficient and productive piece of equipment giving you years of satisfaction. This manual will help you to achieve this objective.

The safe operation and maintenance of your Lifestyle Quad Topper Slasher is very important to prevent any personal injury and / or equipment damage. Read and fully understand the following instructions before operating or carrying out maintenance.

This instruction manual must be read in conjunction with the specific Tractor Operation Manual, Hazard Risk and Farm Machinery Safe Work Practices, prior to the equipment being placed in service.

Fieldquip warrants new products sold but it to be free from defects in material and workmanship for a period of twelve months for farmers or lifestyle applications or six months for contractors, after delivery to the initial user. This warranty is for the replacement or repair of any part found to be defective during the warranty period. This warranty excludes any transport freight costs incurred by Fieldquip in giving effect to the warranty and specifically excludes all normal maintenance costs. This warranty also excludes loss of income incurred by the owner due to down time. Replacement parts provided under the terms of this warranty are covered for the remainder of the warranty period applicable to the product in which they are installed as if such parts were original components of that product.

It is the dealer's responsibility to deliver this unit to you fully assembled and to assist you in the instillation. Before use carefully check the entire machine for transit damage and report any problems immediately.

Fieldquip reserves the right to make changes or improvements in design and construction at any time, without incurring the obligation to make these changes on previously manufactured units.

Many Thanks

*The Manager*

Fieldquip  
199 Bridge Street  
Oakey QLD 4401

Ph: 07) 46911500

## DESCRIPTION

The Quad Topper Slasher by Fieldquip is designed to tow behind a quad bike. There are 2 styles in the Quad Topper range with Quad Topper slasher is ideal for school yards, acreage and orchards. The Quad Topper Estate Finishing Mower leaves the lawn with the manicured finish.

Please ensure the unit you have purchased the correct unit for the finish you wish to achieve. Due to the very nature of this implement it is extremely important that you read and understand this owner's manual, before commencing operation.

The Quad Topper Slasher is covered in this manual

The Quad Topper Estate Finishing Mower is covered in this manual

Record the details of your Quad Topper here for future reference.

Serial Number: \_\_\_\_\_

Model: \_\_\_\_\_

Date of Delivery: \_\_\_\_\_

Name of Dealer: \_\_\_\_\_

Dealer Address: \_\_\_\_\_

Dealer Contact No: \_\_\_\_\_

Installed by: \_\_\_\_\_

## TO THE DEALER

Assembly and proper installation of this product is the responsibility of the dealer. The dealer must complete all items on the Warranty Registration & Installation Form included in this manual before releasing the implement to the new owner. Both dealer and customer must sign the registration, which certifies that all Dealer Checklist items have been completed. The dealer must return a copy of the Warranty Registration & Installation Form to Fieldquip Australia. Reminders about Warranty Registration that have not been returned will be sent out to demonstrate that reasonable attempts have been made to ensure dealers complete risk assessment and pre-delivery obligations.

## TO THE OWNER

Read this manual before operating your Fieldquip Australia implement. The information presented will prepare you to do a much better and safer job. Keep this manual handy as a reference. Ensure all operators read this manual carefully and become acquainted with all the adjustments and operating procedures before attempting to operate. Keep a record that the operator has read and understands the correct operating procedures as outline in this manual. The implement you have purchased has been carefully engineered and manufactured to provide dependable and satisfactory use. Like all mechanical products, it will require routine cleaning, upkeep and maintenance. Lubricate the implement as specified. Observe all safety information in this manual and safety decals on the implement.



### **Your Safety is involved be careful**

**Safety is a primary concern in the design and manufacture of Fieldquip products. This implement like all mechanical products can cause serious injury if misused. Please ensure you read, understand and follow this manual for your own safety and that of others.**

## GENERAL INFORMATION

The purpose of this manual is to assist you in operating and maintaining your Fieldquip Quad Topper Slasher. Read it carefully. It provides information and instructions that will help you achieve years of dependable performance. These instructions have been compiled from extensive field experience and engineering data. Some information may be general in nature due to the unknown and varying operating conditions. However, through experience and these instructions, you should be able to develop procedures suitable to your particular situation. The illustrations and data used in this manual were current at the time of printing, but in an effort to bring you better products we are always implementing continuous improvements that may vary your implement slightly in detail. We reserve the right to redesign and change the machine as may be necessary without notice.

## SPECIFICATIONS

	Quad Topper Slasher	Quad Topper Estate Finishing Mower
Cutting Width	1460	1760
Width (Overall)	1590	1890
Length (Overall)	1675	1975
Height (Overall)	960	960
Weight Kgs (Approx)	390	460
HP Requirements	35-75	45-80
Cutter ft/min	16000	19300
Number of Blades (Standard)	2	2
PTO Speed	540	540
3 Point Linkage Cat	Cat I & II	Cat I & II
3 Point Linkage Offset	120RH	170RH
Cutting Heights	20-120mm	20-120mm

*Specifications are subject to alteration without notice.*

## DECALS

**Attention Be Careful! Your Safety is Involved**  
Replace Immediately if Damaged

**Decals all Models**





FQS-002

**DANGER! KEEP CLEAR**

FQS-047



Each machine comes with its own serial number plate which will show the model and serial number starting with FQ this number identifies the implement for spare parts enquires and to complete your warranty form.

 **IMPORTANT**

### **SAFETY RULES & ACCIDENT PREVENTION**

**ATTENTION BE CAREFUL YOUR SAFETY IS INVOLVED**

Safety is a primary concern in the design and manufacturing of our products. Unfortunately, our efforts to provide safe equipment can be wiped out by a single careless act of an operator. In addition to the design and configuration of equipment, hazard control and accident prevention are dependent upon the awareness, concern, prudence and proper training of personnel involved in the operation, transport, maintenance and storage of equipment.

Under no circumstances whatsoever should the tractor/implement combination, be operated whilst carrying a passenger either on or in the tractor or on the implement.

Remember it is the owner's responsibility to ensure all operators are fully informed and trained.

**Safety instructions are important! Read all attachments and unit manuals; follow all safety rules and safety decal information. Failure to follow instructions can result in serious injury or death.**

- Do not allow anyone under the age of 18 or untrained persons to operate equipment.
- Do not operate the implement or tractor whilst under the influence of drugs or alcohol.
- Know your controls and how to stop quickly in an emergency.
- Ensure your tractor has a fire extinguisher and you know how to operate the extinguisher in the event of an emergency.
- Tractors **MUST** be fitted with Roll-Over Protection Structure (ROPS) or (ROPS Cab). It is also advised that your tractor be fitted with a seatbelt, where fitted it must be worn at all times. Falling from your tractor can result in death from being run over or crushed. If your tractor is fitted with a folding ROPS keep it in the "locked up" position at all times.
- Always wear relatively tight fitted clothing, heavy duty, rough-soled boots and protective equipment for eyes, hair, hands, hearing and head.
- Operate only in daylight or good artificial light.
- Keep hands, feet, hair, and clothing away from moving parts while engine is running.
- Keep all people and animals away from the implement during start up, operating and when stopping.
- Never discharge directly toward people, animals or property.

- For transportation on public roads the operator must ensure that the tractor and implement complies with current State and Federal laws and must strictly adhere to all road traffic regulations in force in his/her particular state.
- Never operate along roads, pathways or populated areas without approved chains or shielding fitted to the implement. If the shielding is missing or is damaged, operation must cease until rectified.
- When working in populated areas always place signs in the area to alert people or vehicles that may pass. Operation must be stopped when anyone cones within 100 metres.
- Ensure all safety decals are installed. Replace if damaged.
- Ensure shields and guards are properly installed and in good working condition. Replace if damaged.
- Remove any debris that has accumulated on the implement, tractor or engine to avoid fire hazard.
- Keep hands and body away from pressurized lines. Use paper or cardboard, not hands or other body parts, to check for leaks. Wear safety goggles. Hydraulic fluid (oil) under pressure can easily penetrate the skin and will cause serious injury or death.
- Make sure that all operating and service personnel know that if hydraulic fluid (oil) penetrates the skin, it must be surgically removed as soon as possible by a doctor familiar with this form of injury. Otherwise, gangrene, serious injury or death will result.

***Contact a Physician immediately if fluid enters skin or eyes. Do not delay.***

- Never place any part of the body underneath the implement or between moveable parts even when engine has been turned off. Hydraulic systems can “creep” (slowly lower). They may fail or movement of the control levers can cause the implement to drop or rotate unexpectedly causing severe injury or death.
- Follow Operators Manual instructions for working on your implement or have servicing carried out by a qualified dealer.
- No operator, however experienced in farm machinery operation, should attempt to use any piece of machinery until they have been competently trained in its proper use.
- Operators must be instructed in and be capable of the safe operation of the equipment and all controls. Do not allow anyone to operate this equipment without proper instruction.
- If you do not understand any part of this manual and need assistance the Department of Agriculture, Occupational Health & Safety Offices, any Agricultural School or college and your local dealer should be able to direct you on where you can receive appropriate training.
- Inspect operating area, remove where possible any stones or foreign objects that may cause injury or damage. It is very important to always watch for foreign objects in the area you are operating and avoid any that could cause injury or damage.
- During routine checks and or repairs ensure that no one can switch on the tractor or implement accidentally. Keep the key to the tractor in your pocket.
- Make sure the tractor is turned off with the key removed, hand brake applied and wheel chocked whilst performing any servicing or routine checks.
- Check that all hardware is tight and properly installed.
- Firmly tighten all nuts/bolts/screws/shackles before operating. If worn or damaged, replace immediately.
- Ensure implement is properly attached, adjusted and in a good condition so that it can be operated safely.
- Make sure all spring activated locking pins or collars on the Power Take-Off (PTO) move freely, are well greased and are firmly seated in the tractor PTO splined angular groove.
- Before commencing operation, check all equipment driveline guards for damage and make sure they rotate freely. Replace any damaged guard or guards that do not rotate freely on drivelines.
- Inspect chains, shackles, deflectors and any wear parts for damage. Replace if damaged.
- Do not operate implement unless side skids are in good condition. Replace if damaged.
- Before commencing any adjustment, maintenance, or cleaning always park tractor and implement on good level ground, disengage the PTO, switch off the tractor engine, remove key and apply hand brake.
- Before dismounting tractor lower the 3-point linkage and any other raised components (i.e. loader bucket) to the ground. Operate valve levers to release any hydraulic pressure, and unfasten seat belt. Once dismounted chock wheels and ensure implements are safely supported. Ensure all moving parts

have come to a complete stop. Disconnect driveline from the tractor PTO before performing any service work.

- For your own and others safety and to avoid forfeiting your warranty, use only genuine spare parts. Your dealer can supply you with genuine replacement parts.
- Do not modify/alter or permit anyone else to modify/alter the implement or any of its components.
- Block implements securely for storage.
- Keep children and bystanders away from storage area.
- Fieldquip Australia accepts no responsibility or liability for any losses, injuries or damage that may result from failing to observe these safety rules and the safety decals on the implement.
- Do not handle blades with bare hands. Careless or improper handling may result in serious injury.
- Frequently check blades. They should be sharp, free of nicks and cracks and securely fastened. Replace if necessary. Always use genuine Fieldquip Blades. Your dealer can supply you with genuine replacement blades.
- Always replace blade bolts and bushes whenever you replace the blades.

## **OPERATION**

*“The best safety device is an informed careful operator.”*

The operator is responsible for the safe operation of this implement. The operator must be properly trained and over the age of 18. Operators should be familiar with the implement and tractor and all safety practices before starting operation. Read safety rules and safety decal information before starting operations.

- Always operate equipment from the seat of the tractor with the seat belt securely fastened. Place transmission in neutral, engage brake and ensure all other controls are disengaged before starting tractor engine.
- A minimum 20% of tractor and equipment weight must be on the tractor’s front wheels with implement in the transport position. Without this weight, tractor could tip over causing personal injury or death. The weight may be attained with a loader, front wheel weights, and ballast in the tyres or front tractor weights. When attaining the minimum 20% weight on the front wheels, you must not exceed the ROPS max ballasted mass certificate. Weigh the tractor and implement. Do not estimate.
- Never leave a tractor and implement running unattended.
- Do not carry persons or objects on the implement or tractor during work or while in transit.
- Look down and to the rear and make sure area is clear and safe before traveling in reverse.
- Use extreme care when working close to fences, ditches, hillsides or other obstacles.
- Do not operate or transport on steep slopes.
- Do not stop, start or change directions suddenly when traveling on slopes.
- Do not stop, start or change directions suddenly on slopes, working up and down is preferred.
- Use extreme care and reduce ground speed on slopes and rough terrain.
- Watch for hidden hazards on the terrain during operation and avoid any hazards or object that could cause injury or damage.
- Stop implement, then tractor, immediately upon striking an obstruction. Turn off engine, remove key, inspect and repair any damage before resuming operations. Always block implement when inspecting.
- Do not operate tractor PTO during transport or when implement is raised more than 150mm above the ground. Disconnect the PTO when raising the slasher above working height.
- Disconnect driveline from the tractor PTO before performing any service work.
- Operate tractor PTO at 540 rpm speed as stated in “Specifications” section, unless you have purchased a Multi-Head and requested 1000rpm. Always ensure the correct setting on your tractor before start up.

## ATTACHING TO THE IMPLEMENT

- Reverse your quad bike up to the implement, and connect to the ball hitch, ensuring that it is locked in position.
- With the quad bike and implement on level ground, ensure that both wheels are set at the same height, in respect of the height locking bolt being in the same hole on each quadrant plate.
- Now adjust the drawbar bolt settings to ensure that the machine is parallel to the ground front to back.

## CUTTING HEIGHT ADJUSTMENT

### Quad Topper:

- With the underbody of the mower deck supported, undo side plate bolts, adjust height and refasten bolts ensuring side plates are parallel (i.e. bolts both in same height setting)

### Quad Topper Estate:

- First insert the adjustment handle into the socket on the wheel pivot plate and push down to take the weight of the implement. With the other hand undo the height-locking bolt. Raise or lower the handle and re-insert the height-locking bolt in the required hole.
- Repeat on the opposite side of the implement, ensuring that both sides are the same.
- Replace the handle into its socket.
- Adjust the height of the drawbar if necessary to ensure that the body of the implement is parallel to the ground from front to back.

## BELT ADJUSTMENT

### Quad Topper Estate:

The drive belts are adjustable by moving the engine on its mounting plate in relation to the mower deck.

- First remove the belt covers, this will loosen the engine plate, To tighten the belts undo unlock nuts and tighten the two tensioning screws clockwise, pulling the engine and its driving pulley away from the centre rotor pulley. Ensure both screws are adjusted the same to keep assembly parallel and belts tensioned evenly.
- The belts should be free to move 12mm under finger pressure, if they are too tight there will be undue stress on driven parts.
- When belts are adjusted correctly, tighten the locknut on the adjusting screw and replace the belt covers tightening down well.

## LUBRICATION

- The engine should be maintained in accordance with the engine manual provided.
- Grease the spindle bearing through the grease nipple above spindle pulleys daily.

## MAINTENANCE



**Check all fastening sets after 8 hours of work.**

### Belts

- Should be checked periodically, and replaced if found to be fraying, cut or damaged in any other way.

### Blades

- These should be regularly checked for condition. Damaged blades cause imbalance in the rotor, and in turn can cause serious damage to the mower, which is specifically excluded from our warranty conditions.
- If the mower begins to vibrate, stop work immediately and investigate. Almost certainly the cause will be damaged blades.

## REMOVING THE IMPLEMENT

- With the quad bike and implement on level ground,
- Turn of quad bike ignition and remove key. Firmly apply park brake.
- Position quad topper into storage area.
- Disconnect from the ball hitch.
- Ensure the quad topper cannot move

## DAILY PRE-OPERATION CHECKLIST

(Owners Responsibility)

- Review and follow safety rules outlined in this manual.
- Check the implement is properly and securely attached to the tractor.
- Make sure PTO spring activated locking pin is well greased, slides freely and is firmly seated in tractor PTO splined angular groove.
- Set tractor PTO at 540 rpm (Some Multi-Heads may have been designed for 1000rpm).
- Lubricate all grease fitting locations. Make sure PTO joints and shaft are well lubricated.
- Remove small oil level plug on side of gearbox and assure oil leaks out. Top up if no oil is present.
- Check all hardware (i.e. bolts, nuts, shackles, chains, etc) are properly installed, secured and in good condition.
- Check blades are sharp and secure and cutting edge is positioned to lead when rotating anti-clockwise.
- Check that all shields and guards are properly installed and in good condition.
- Check cutting height, front to rear attitude and top link adjustment.
- Set slip clutch as outlined in "Owner Service" section of this manual.
- Ensure tractor PTO and transmissions are in neutral before starting engine.
- Inspect area that you will be operating in and remove any object that may cause injury or damage.
- Vibration tends to loosen bolts during operation. All hardware should be checked regularly. It is good practice to check implement before each operation to ensure all hardware is secure.

## SERVICING

- Servicing should be carried out by trained service technicians available through your dealer.

## **BLOCKING METHOD**

- To minimize the potential hazards of working underneath the implement, these procedures must be followed.
- Never go underneath implements that are lowered to the ground or raised, unless it is properly blocked and secure. Never place any part of the body underneath the implement or between moveable parts even when engine has been turned off. Hydraulic systems can “creep” (i.e. slowly lower). They may fail or movement of the control levers can cause the implement to drop or rotate unexpectedly causing severe injury or death.
- Follow Operator’s Manual instructions for working on your implement, correct blocking procedures or have servicing carried out by a qualified dealer.
- During routine checks and/or repairs ensure that no one can switch on the tractor or Implement accidentally. Keep the key to the tractor in your pocket.
- Jack stands with a load rating of 1000lbs or more are the only approved blocking devices for this implement. A minimum of four (4) jack stands, located under the implement must be installed before working underneath the implement. Do not position jack stands under wheels, axles or wheel supports as components can rotate and cause implement to fall.
- When blocking, you must consider the overall stability of the implement. Just placing jack stands under the unit will not ensure your safety. The working surface must be level and solid to support the weight of the jack stands. Ensure jack stands are stable both top and bottom, and implement is approximately level. With full implement weight lowered onto jack stands, test blocking stability before beginning working underneath implement.
- Implement should be properly and securely attached to the tractor (see operating section), the brakes firmly set, key removed and both front and rear tractor wheels securely blocked.

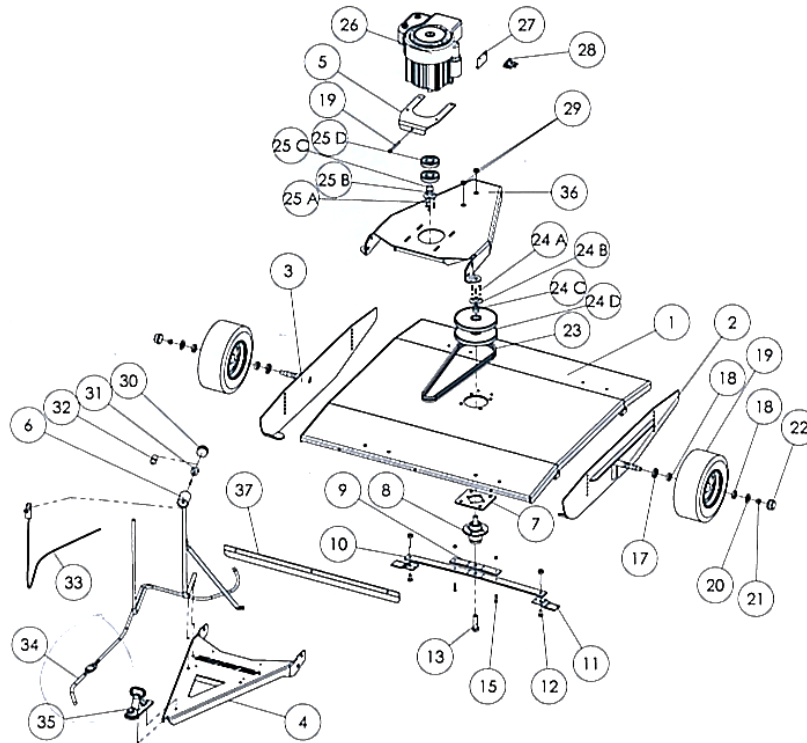
## **CUTTER BAR AND BLADE SERVICING**

- It will be necessary to gain access to the bottom side of the slasher to change the blades. Disconnect implement from the quad bike, raise implement and block securely as outlined in this manual, before changing the blades.
- Remove nuts and then carefully remove blade bolt. If blade bolt is seized in the cross bar, to prevent gearbox damage, it may be necessary to completely unbolt rotor before driving the old bolt out.
- Always replace or sharpen both blades at the same time. Inspect blade bolts for nicks and gouges; replace if any are found. Insert blade bolt through lower part of the blade beam, then through the blade with the hardened bush inserted.
- Finally insert through the top part of the blade beam and secure with Nyloc Nut. Blade should swivel on the bolt.
- Determine cause if it does not and correct (ie maybe nut too tight).
- Blade beam rotation is anti-clockwise when looking down on the slasher. Be sure to install blade cutting edge to lead in an anti-clockwise direction.
- When sharpening blades grind each blade the same amount to maintain balance. Replace blades in pairs. Unbalanced blades will cause excessive vibration that can damage gearbox bearings. Vibration may also cause structural cracks to the implement and/or gearbox housing.

## TROUBLE SHOOTING

Problem	Possible Causes	Solution
Grass cut is lower in the centre than on the edges.	Height of the quad topper is lower at the front or rear.	Adjust height so that the front and rear of the quad topper are within 20mm of the same height. See instructions.
Quad topper is "Streaking" (i.e. not cutting cleanly.)	Conditions too wet for cutting. Wet grass.	Allow grass to dry before cutting.
	Blades unable to cut the grass that the tractor tyres pressed down.	Reduce ground speed. Lower cutting height.
	Dull Blades.	Sharpen or replace blades.
Material discharged from quad topper is uneven and in clumps.	Material being cut is too long and/or has too much volume.	Reduce speed or make two passes. First pass higher than the second and the second at 90° to the first.
	Wet grass.	Allow grass to dry before cutting. Reduce speed.
	Rear of quad topper too low, trapping material underneath.	Adjust quad topper height
Quad topper will not cut all the time and the clutch smokes when it's not cutting.	Slip clutch is slipping.	Adjust slip clutch according to instructions in the "owner Service" section of this manual

## SPARE PARTS FOR QUADTOPPER SERIES SLASHER



Item No.	L Model	XL Model	Part Description	Mach. Qty	Item No.	L Model	XL Model	Part Description	Mach. Qty
1	641200	641500	Chassis Deck	1	24B	160019.02	160019.01	Retainer (No. 2)	1
2	182800	183800	LH Skid Plate	1	24C	160019.01	160019.01	Bush (No. 2)	1
3	182801	183801	RH Skid Plate	1	24D	160019	160019	Biloc Pulley - Dia: 180/224	1
4	995601	995601	Draw Bar	1	25A	160018.03	160018.03	Stack Bolt Set (No. 1)	1
5	641201	641201.01	Belt Tension Plate	1	25B	160018.02	160018.02	Retainer (No. 1)	1
6	995603	995603	Remote Throttle Handle	1	25C	160018.01	160018.01	Bush (No. 1)	1
7	641202	641202	Adapter Pulley Plate	1	25D	160018	160018	Biloc Pulley - Dia: 85	1
8	01.404	01.404	Spindle Assembly Complete	1	26	10.220	10.221	Formula 10 Engine - 11Hp/13Hp	1
	02.192	02.192	Spindle Shaft Only	1		10.225	10.225	18Hp Engine	1
	04.086	04.086	Spindle Bearing - Top	1	26A	22006.01	22006.02	Engine Shaft Bolt	1
	04.091	04.091	Spindle Bearing - Lower	1	27	2092.1	2092.1	Solenoid Mount Bracket	1
9	121019.01	121020.01	Blade Support Bar	1	28	2092	2092	Solenoid	1
10	121019	121020	Flail Carrier	1	29	11350	11350	Grommet for Spindle Greasing	1
11	2360	2360	Flail Tip	2	30	910908	910908	Bung	1
12	2358	2358	Flail Bolt & Nut	2	31	D463A	D463A	Ignition Switch	1
13	06.056.01	06.506.01	Blade Bolt (RH)	1	32	2940	N/A	Kill Switch Wiring Loom	1
15	121019.02	121019.02	Support Bar Bolt/Nut	2	33	9115	9115	Throttle Cable	1
17			Oil Seal for 9454 Wheel	2	34	10.223	10.223	Electric Start Wiring Loom	1
18			Bearing for 9454 Wheel	4	34	10.219	N/A	Kill Switch Wiring Loom	1
19	9454	9454	Quad Topper Wheel Assembly	2	35	9958	9958	Drawbar Coupling	1
19	641201.02	641201.02	Belt Tension Bolt	1	36	641201	641201	Motor Mount Cover	1
23	641204.01	641207	Vee Belt	1	37	691207	691207	Front Guards	1
24A	160020.03	160020.03	Stack Bolt Set	1		160016	160016	1 Groove Clutch (optional)	1

# Quad Topper Estate Finishing Mower

## ASSEMBLY INSTRUCTIONS

- Depending on the location of the dealer the implement maybe shipped partly assembled or in parts, in any case the assembly of this implement is the responsibility of the Fieldquip dealer. It should be delivered to the new owner completely assembled, lubricated and adjusted for normal cutting conditions. Dealers please note that, even if the implement is delivered to you fully assembled, an authorised company representative with mechanical knowledge should still carryout the pre-delivery checks to ensure that nothing has come loose in transit. Final assembly should result in the Quad Topper Slasher looking like the photos pictured earlier in this manual.
- Firmly tighten all nuts, bolts, screws and shackles before operating. Check equal tension on chain stays.
- Always wear relatively tight fitted clothing to avoid entanglement in moving parts. Wear heavy-duty, rough-soled boots and protective equipment for eyes, hair, hands, hearing and head.

## PRE-DELIVERY CHECKLIST

### (Dealers Responsibility)

Inspect implement thoroughly after assembly to be certain it is set up properly before delivering it to the customer. The following checklist is a reminder of points to inspect. Check off each item as it is found satisfactory either before or after corrections or services performed. Check all bolts to be sure that they are tight.

## Dealer Delivery Information

Check gearbox oil level before use, top up if needed, check seals are in good condition and not leaking. Refer to lubrication instructions and lubricate implement. Check that blades have been properly installed. Show customer how to make adjustments. Describe the options available for the implement and explain the purpose and how they work. Explain the importance of lubrication to the customer and point out all the lubrication points on the implement. Point out the safety features. Give Operators Manual to the customer and recommend that customer become familiar with all sections, especially the safety and safe operating procedures. Explain to the customer that when transporting the implement on roads or highways, day or night, safety devices should be used to provide adequate warning to operators of other vehicles. Also explain the operator must ensure that the quad bike and implement complies with current State and Federal laws and must strictly adhere to all road traffic regulations in force in his/her particular state.

**Ensure the customer has signed the WARRANTY REGISTRATION & INSTALLATION FORM and a copy has been returned to Fieldquip Australia, PO Box 333 Oakey QLD 4001**

## WARRANTY

All Fieldquip machinery is covered by a comprehensive warranty against faulty materials and workmanship provided that (i) The machine is operated in normal use, (ii) The machine is correctly serviced and maintained, (iii) The machine is worked within its stated capacity (ie. Horsepower limit and PTO Speed), (iv) The machine is not subjected to any modifications or damage from improper use, (v) Fieldquip is in receipt of duly signed pre- delivery and installation certificate and warranty documentation.

The term of warranty shall be 12 months from date of installation except machines sold into the Hire Industry; these shall be void of warranty.

The following items are not covered by Fieldquip warranty; (i) Power Take-off shafts and clutches, (ii) Blades, tynes, knives, tyres, belts etc. (iii) Freight costs, (iv) Loss of income from the machine due to a warranty fault, (v) Use of non genuine parts.

The manufacturer's obligation under this warranty is limited to correcting without charge at its factory or by one of its authorised Dealers, with the manufacturer's approval, any parts thereof, within 12 months from date of purchase by the original user, and which upon examination shall disclose to the manufacturer's satisfaction to have been originally defective.

Correction of such defects by repair to, or supplying of replacements of defective parts, shall constitute fulfilment of all obligations to the original user: Manufacturer shall not be liable for loss, damage, or expense directly or indirectly from the use of its product or from any other cause. Defective parts must be returned freight paid each way by the purchaser to the manufacturer.

This warranty shall apply to any parts which must be replaced because of normal wear, or which have not been repaired or altered outside of the manufacturer's factory unless authorised by the manufacture. This warranty should not be construed as a free service period during the warranty period.

No person, agent or dealer is authorised to give any warranties on behalf of the manufacturer or to assume for the manufacturer any other liability in connection with any of its product unless made in writing from the manufacturer.

All claims will be nul and void if any warranty work is commenced without prior approval from Fieldquip.

## WARRANTY PROCEDURE

- Contact Dealer who will contact Fieldquip
- Photos of repair required emailed to [warranty@fieldquip.com](mailto:warranty@fieldquip.com) with description of problem
- Claim will be assessed by warranty department and if repair is approved a warranty claim number and form will be issued.
- This process is designed to take no longer than 24hrs from receiving email requesting warranty.
- Warranty claim form to be returned to Fieldquip prior to reimbursement.
- Under no circumstances will travel, freight charges be recognised under warranty this is the responsibility of the owner.
- Please note that not all items are covered under warranty, refer to warranty card. If unsure please contact warranty claim department on 07)4691 1500.
- Under no circumstance should work be commenced without a warranty claim form number and approval.
- Fieldquip will not recognise any work carried out without a warranty claim number.

## PRE DELIVERY CHECKLIST

### Dealers Responsibility

Inspect implement thoroughly after assembly to be certain it is set up properly before delivering it to the customer. The following checklist is a reminder of points to inspect. Check off each item as it is found satisfactory either before or after corrections or services performed.

The product is complete and correctly assembled

Check all bolts and ensure that they are tight

Check all cotter pins and linkage pins and ensure they are properly installed and can be secured

Check that any "wear points" (i.e. Points, blades, edges, tines) have been properly installed.

Check PTO series is correct and that the PTO is the correct length

All lubrication is completed.

Refer to lubrication instructions and lubricate implement

Ensure that gearbox has correct oil and volume.

All hydraulic fittings and hoses have been correctly installed

Ensure the stability of the tractor has not been compromised.

All guards, safety features and decals are in place and secure.

The product number and serial number are recorded FQ\_\_\_\_ - \_\_\_\_\_

## PRODUCT CHECKLIST - Delivery

The customer has been given the Operator's Manual, Task Hazard Analysis and Farm Machinery Safe Work Practices

Has recommended to the customer to become familiar with all sections of manuals, especially safety and operation procedures.

The customer undertakes to read the complete operator's manual and understands its contents, prior to operation of the machine

All safety information has been explained, and decals, guards and serial number identified

Explain to the customer about transporting the implement on roads or highways.

The maintenance of the implement has been explained

The starting and operating procedures have been explained

I acknowledge that all of the delivery items listed above were reviewed with me at delivery.

Dealers Name: \_\_\_\_\_

DealersAddress: \_\_\_\_\_

Customers Name: \_\_\_\_\_

Address: \_\_\_\_\_

Customer's Signature: \_\_\_\_\_ Date: \_\_\_\_\_

Dealer's Signature: \_\_\_\_\_ Date: \_\_\_\_\_

Please Note: A signed complete copy of this form must be returned to us, with the "Warranty Registration & Installation Form" for legal & warranty purposes.

**Ensure the customer has signed the WARRANTY REGISTRATION & INSTALLATION FORM and a copy has been returned to Fieldquip Australia Pty Ltd, PO Box 333 Oakey, Queensland 4401**

**DELIVERY, WARRANTY AND SAFETY ACKNOWLEDGEMENT**  
To be completed by the dealer and purchaser at the time of delivery and returned to Fieldquip

Dealer Name and Address:

.....  
.....  
.....

On behalf of the above dealership I hereby state:

1. This is a new machine and has been thoroughly checked by our personnel prior to delivery and is in safe working condition.
2. I have fully explained the warranty including the owner's responsibility to pay for travelling costs and expendable items.
3. I have supplied the owner with an operator's manual and explained the service and safety aspects of the machines operation and the existence of the relevant safety standards.
4. I have shown the owner the service point of the machine and explained the importance of regular service.
5. I have delivered the operators manual and warranty card.
6. I have reviewed the contents of these books including the relevant sections on safety with the new owner.
7. I have demonstrated the machines safety features and explained the approved work practices.
8. I have discussed the approved codes of practice which apply to this type of machine.
9. I will arrange to return this form to Fieldquip for registration within 14 days of sale along with the warranty card.

Name: ..... (Block Letters) Position Title: .....  
Signature: ..... Date: .....

Owners Name and Address: .....

.....  
.....

I hereby acknowledge:

1. I have received and accepted delivery of the machine listed above.
2. The machine has been delivered to me with all systems functioning and running to my satisfaction.
3. I have been instructed and understand the application, limitations and capabilities that the machine has been designed for.
4. I understand and accept the Fieldquip warranty and understand I am responsible to pay for travelling costs and expendable items.
5. I have received an operator manual and warranty card and have reviewed their content regarding the correct operation of the machine.
6. I will be expecting confirmation of this warranty registration from Fieldquip.
7. The dealer has supplied an owner's manual with the machine and reviewed the sections on safety with me making any explanations that may be required.
8. I am particularly aware of the importance of not operating the machine outside the safety guidelines.
9. I understand the principles of safe operation of this machine and accept responsibility to ensure that any persons who operate this machine are properly instructed in these matters.
10. In the event that the regulatory authorities or Fieldquip should require modifications or new service procedures to be made or adopted we indemnify Fieldquip and the dealer from any liability or cost which may be involved.
11. In the event that ownership of this machine should pass from me, I undertake to pass responsibility for the above matters on to the new owner and I will advise Fieldquip of the change of ownership.

Name: ..... (Block Letters) Title: .....  
Signature: ..... Date: .....