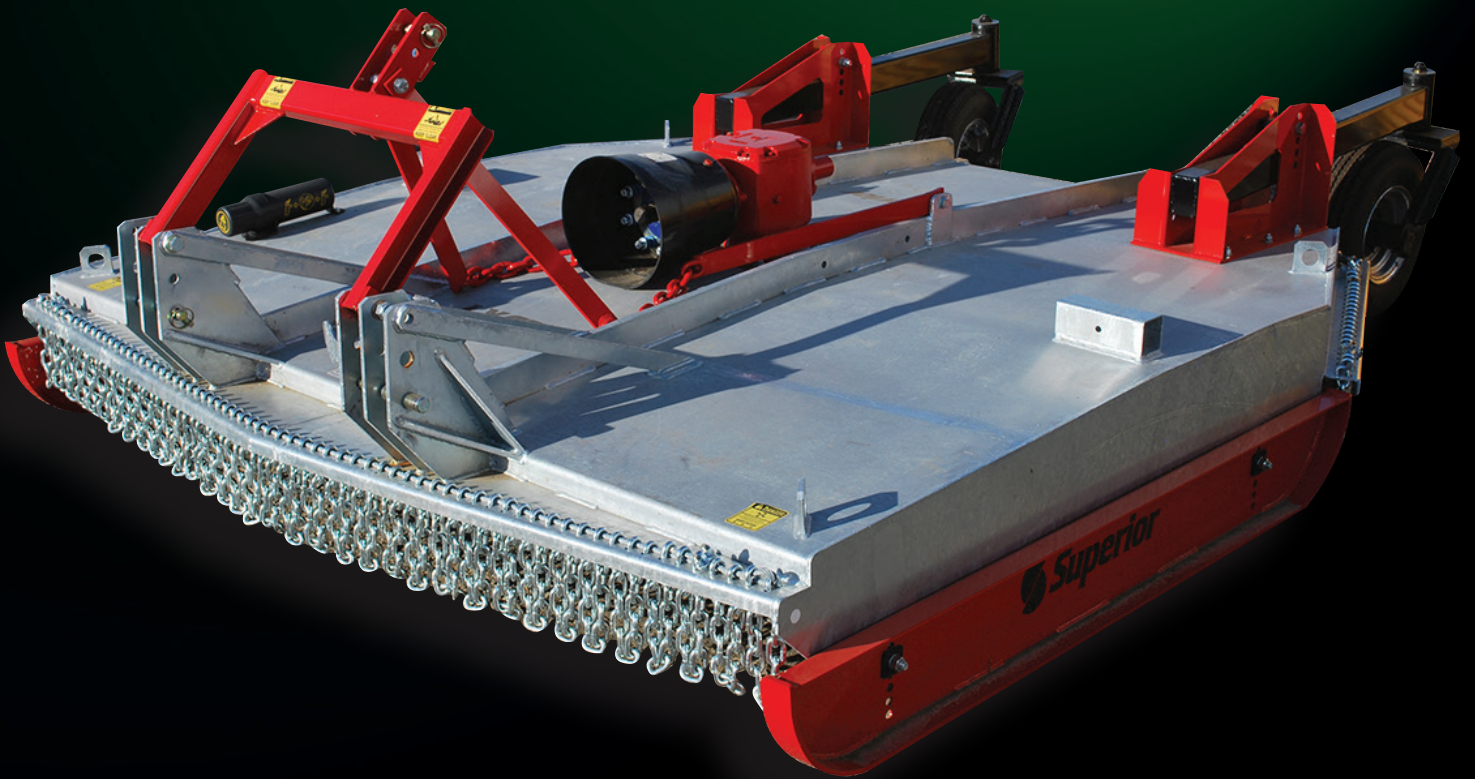


# **FIELDQUIP®**

*...a cut above the rest!*



**SETTING THE STANDARD**  
**LXCT SERIES**  
**SLASHERS**

# LXCT SERIES SLASHERS

- TPL Cat and II
- Heavy Duty Flex Tower
- Laminated Spring Steel Blades & Beams
- High Speed Extreme Duty Gearbox 150hp
- 4 Plate Clutch Protection
- Rear Stone Guard
- Adjustable Skids
- Front & Rear Safety Chains
- 300mm Side Depth
- 6mm Clean Top Design
- Side Plates also 6mm
- Single 500 x 10 Monofill  
Castor Wheels for LXCT6
- Twin 500 x 10 Monofill Castor Wheels for LXCT7 & LXCT8
- Galvanised as standard with painted trim
- Optional Safety Stands

Model	Working Width	Weight	HP (Min.)
LXCT6B	1.8m (6')	850 kg	70
LXCT7B	2.15m (7)	980 kg	80
LXCT8B	2.35m (7'10")	1,080 kg	100

## Options

Cat III Tower for LCT, LXCT  
Sign Rack (complete with 4 signs)  
Tool Box  
Support Legs

Hydraulic Fan  
Rear Lights  
Extra Wheelkit for LCT72 & LXCT6B

**FIELDQUIP**   
*...a cut above the rest!*

**FREECALL: 1800 454 150**

**Phone: (07) 4691 1500 Fax: (07) 4691 1511 [www.fieldquip.com.au](http://www.fieldquip.com.au)  
199 Bridge Street Oakey Queensland Australia 4401**

Additional lines may be added or deleted from the range in this guide -  
visit [www.fieldquip.com.au](http://www.fieldquip.com.au) for new models and availability