

INSTRUCTION MANUAL AND PARTS LIST

FOR

FME105 - FME125 - FME155

AS FROM 09 December 2004

DATE: _____

VERIFIED: _____

INDEX

	PAGE
CORPORATE PHILOSOPHY	1
OPERATIONAL SAFETY INSTRUCTIONS	2 - 4
GENERAL INFORMATION	5
TECHNICAL FEATURES	5 - 6
GENERAL SAFETY RULES	7
INSTALLATION AND HANDLING	8
ADJUSTMENT AND SETTING UP	9
USE AND OPERATING USE	9
MACHINE MAINTENANCE	10
TROUBLE SHOOTING CHART	11
REPLACING PARTS	12-12A
MAIN FRAME	13 - 13A
TRANSMISSION UNIT	14
GEARBOX 2020	15
ROLLER	16 - 16A
FRONT ROLLER	17
SHAFT	18
WHEEL	19
WARRANTY AND OWNERS NOTES	20

GENERAL INFORMATION

- This operation and maintenance manual is intended for the professional user. It is mandatory to follow these instructions in order to prevent events which could endanger the operator's and other people's safety, apart from the correct functioning of the shredder. In case of doubt, do not experiment, call "Superior Equipment Australia Pty Ltd" after-sales service instead, or the specialised Superior Equipment Australia Pty Ltd dealer.

Identifying the machine:

- Each shredder is fitted with an identification plate; both the data necessary to identify the model and the serial number to order spare parts or after-sales service are stamped on the plate.
- It is strongly recommended to use genuine Superior Equipment Australia Pty Ltd spare parts to avoid altering the technical features of the shredder. Superior Equipment Australia Pty Ltd is not responsible for any damage or injuries to persons due to unauthorised modifications.

TECHNICAL FEATURES

Description of the Shredder

- Superior Equipment Australia Pty Ltd shredders have been designed with the sole aim of shredding grass, bushes and so on in parks, gardens and playing fields (proper use).
- Any other use is considered improper and the manufacturer disclaims all responsibility for any consequential injuries to persons, or damage to the shredder.

1 - Flails

2 - Rotor

3 - Frame

4 - 3 Point Linkage

5 - Gearbox

6 - Driving Pulley

7 - Belt Guards

8 - Belt Tightener

9 - Rear Guard

10 - Roller

11 - Driven Pulley

12 - Belts

13 - Front Guards

14 - PTO shaft

- "Proper use" also refers to the safety and maintenance rules provided for by the manufacturer.
- A tractor of suitable power must be used for each shredder model. (see TAB. 1)
- Using a tractor with power exceeding the maximum power absorbed by the shredder may damage the transmission assembly and the rotor.
- In such case, the use of a PTO clutch (torque limiter) recommended.
- The shredder is supplied with all safety and accident prevention requirements.

Technical Specifications

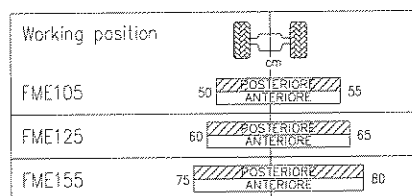
Mod.		FME105	FME125	FME155
With of cut	<i>m</i>	1.05	1.25	1.55
Tractor required power	<i>HP min-max</i>	18-25	20-25	25-30
Power takeoff	<i>rpm</i>	540	540	540
3 point linkage	<i>cat.</i>	1	1	1
Flails	<i>N.</i>	24	28	36
Coltelli polivalenti	<i>N.</i>	48	56	72
Rotor speed	<i>rpm</i>	2,600	2,600	2,600
Weight	<i>Kg.</i>	145	160	180
Width A	<i>cm.</i>	115	135	165
Length B	<i>cm.</i>	61	61	61
Height C	<i>cm.</i>	58	58	58

Noise

The sound level of this machine, as measured at the operator's ear, range from 74.1 to 75dB when the cab is closed, and from 79 to 83.1 when the rear windows is open. The acoustic power level is LWA 103.4. When the sound level perceivable at the operator's ear ranges from 85 DB to 90 DB, the use of ear protectors is recommended.

Working Positions

Table 2 shows the two working positions of the shredder in relation to the center line of the tractor.



VARIATIONS

Back and Rear Towed Versions

The standard machine, back version, can be changed into the rear towed version simply by shifting the 3-point linkage to the back of the shredder frame: then fix it to the 2 holes and make other 4 holes to fix it completely by using 2 stirrups. Give the gearbox 180 Deg. Shift, so that the connection to the PTO is towards the tractor.

IMPORTANT: Always check that the number of revolutions and the rotational direction of the tractor power takeoff correspond to those shown on the shredder.

Front Version

Unlike the rear towed version, the manufacturer the delivers the front version ready-to-use, according to the client's requests as regards the power takeoff speed and rotational direction.

GENERAL SAFETY RULES

General safety rules

- It is mandatory to read and follow the instructions for the use and maintenance manual before carrying out any operation or move with the shredder. Improper use or an incorrect move may seriously damage things and people.
- Both operator and maintenance fitter must know the shredder well, especially regarding dangers resulting from improper use or incorrect repairs.
- Before starting, check on tractor and shredder must be carried out as regards: functionality; road safety; accident prevention rules.
- Even when using the shredder correctly, stones or other object may be thrown a long distance. Therefore nobody must stand within the danger area. Special attention must be paid when working near roads or buildings.
- Use tractor with cabs.
- The condition of flails and of all guards must be checked before beginning the daily work; they must be replaced if damaged or missing.
- During checks or repairs, make sure nobody could start the shredder by mistake.
- Never wear loose or fluttering clothes.
- Never carry passengers on the tractor.
- Never carry people on the shredder.
- Never connect the power takeoff with the engine stopped.
- Never approach the shredder until the rotor has completely stopped.
- Do not enter the working zone of the PTO shaft. It is dangerous to approach the rotating parts of the machine.
- Keep the PTO shaft guard in good order.
- Before starting, check the surrounding area for the eventual presence of children and/or animals.
- It is forbidden to stand in the range of operation of the machine.
- The PTO shaft must be assembled and disassembled only with the engine stopped and the starting key removed.
- Before connecting the power takeoff, check that the speed and rotation direction correspond to those of the shredder.
- Before leaving the tractor with the tool attached, proceed as follows:
 1. Disconnect the power takeoff.
 2. Put the machine steadily to the ground (with the hydraulic lift).
 3. Apply the hand brake and, if the ground is steeply sloping the tractor.
 4. Take the starting key out.
- Immediately replace any safety sign or missing or damaged decal.

Safety Rules Concerning Road Traffic

- In transport, reduce speed, especially on bumpy roads. The very weight of the lifted shredder may render driving difficult and damage the shredder itself.
- Check moreover that the levers which operate the hydraulic lift are locked, to avoid the lowering of the machine during transport.
- When driving on public roads, respect all road rules in force.

Description and Location of Safety Decals

1. Danger sign of rotating flails; do not enter their area of operation with hands or feet.
2. Danger sign: it shows the risk of flying stones or other objects and makes it mandatory to keep out of the danger zone.
3. Danger of getting entangled. Do not approach the rotating PTO shaft. Pay special attention to clothes, which must not be loose or fluttering.
4. Warning of danger through lack of knowledge of all the functions of the machine and the resulting risks. Read the use and maintenance manual before operating the shredder.

INSTALLATION AND HANDLING

Lifting and Unloading

- To handle the shredder use a hoist or a crane with lifting capability suitable to the weight of the machine and with proper chains and type approved hooks to be fixed in the marked points.

Attachment to and Detachment from the Tractor

Before carrying out this operation and any time the shredder is used, it is mandatory to:

- Visually check the machine in general
- Check that all guards are fitted and in good condition
- Confirm that all flails are fitted and in good condition
- Grease the bearings and any other parts as indicated by a decal
- Check the oil level of gearbox

Bring the tractor lower lines near the shredder, insert the two pins and secure them with the spring clips, adjust the tractor lower linkage stabilizer thus fixing the shredder to the tractor in a central position.

Raise the front of the shredder to a horizontal position about 1 cm. From the ground. Fit the top link in the slot of the shredder and adjust it so that the pin is at the front of the slot.

Bin case of particularly uneven fields or steep slopes, it is advisable to replace the fixed top link with a chain.

Completely lift the shredder and check that the tractor is stable.
Eventually ballast the front of the tractor.

Attaching The PTO Shaft

With the hydraulic lift of the tractor place the shredder to the closest point between the two power takeoffs and check the minimum length of the PTO shaft.

If it needs lengthening, check that the overlap is not less than $\frac{2}{3}$ of L.

If it needs shortening, proceed.

The guards of the PTO shaft must be fixed to the shredder and to the tractor with chains, to prevent rotation.

The minimum overlap of the guard and the PTO shaft must not be less than 5 cm.

ADJUSTMENT AND SETTING UP

Adjustment of the Height of Cut

Keep the shredder horizontal.

Flails must never touch the ground. The optimum distance from flail to ground is 2.5cm.

The roller is adjustable and it controls the height of cut. Distance from ground ranges from 1 to 5 cm.

Adjusting Belt Tension

This operation must be carried out with the shredder standing on the ground, the power takeoff disconnected and the starting key removed.

Remove the belt guard (1), loosen the nut (2) and adjust the screw (4) equally to obtain a belt deflection of no more than 1.5 cm. (similar to a 3 Kg. Pressure applied).

At the end of the operation, tighten the screw (3), the nut (2) and refit the belt guard (1).

USE AND OPERATING RULES

Starting

Before using the shredder check the tightness of all bolts and the integrity of all guards. Check that the number of revolutions and the rotational direction of the power takeoff of the tractor correspond to those by the shredder, see decal on the gearbox.

Engage the power takeoff at low engine RPM (without jerking) to avoid damaging the transmission (gearbox and belts).

Working Speed

Working speed is chosen to suit the material to be cut and the degree of chopping required. The optimum speed ranges from 3 to 8 Km per hour.

Transport Position

Check that the shredder is set up in accordance with the road transport safety laws. Do not over lift the shredder, the PTO shaft must not exceed 30 Deg. Drive angle with the power takeoff disconnected.

During transport reduce speed especially on bumpy roads. The weight of the shredder may render driving difficult and damage the shredder itself.

Check that the hydraulic lift levers of the tractor are locked to avoid lowering the shredder when in transport.

The power takeoff must be disconnected during transport.

MACHINE MAINTENANCE

All maintenance, cleaning and repair operations must be carried out with the shredder firmly lowered to the ground and detached from the tractor, or with disconnected PTO, engine off and starting key out.

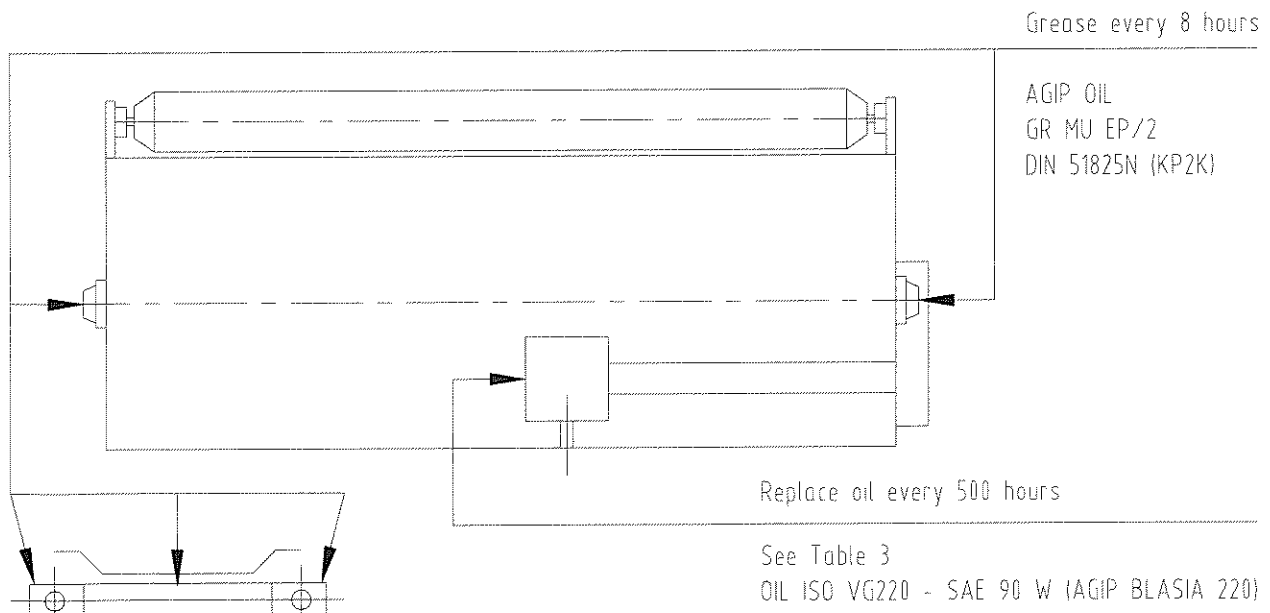
After the first 2 hours operation from new (or after fitting new belts) check belt tension. Regularly, every 10 -15 hours' operation:

- Tighten bolts and nuts
- Check wear and condition of flails
- Check the safety guards
- Check belt stretch and condition
- Visually check the frame to detect possible damage caused by earlier work
- Check gearbox lubricating levels
- Grease the parts on the appropriate decal

This operation must be always carried out at the end of each working day.

This facilitates the removal of mud or other material from the rotating parts (bearings, pins, etc.) In order to avoid rust and possible seizure.

After long inactivity, repeat the operation before reusing the machine. The table shows the



greasing points for the regular and periodical maintenance.

TROUBLE SHOOTING CHART

TROUBLES	CAUSES	REMEDIES
Irregular cut	<ul style="list-style-type: none"> • Worn, bent or broken flails. • Machine is not level with the ground 	<ul style="list-style-type: none"> • Replace • Level it, adjusting the wheels, or the tractor lift
Irregular spread of the shredder material	<ul style="list-style-type: none"> • Clogged material due to excessive working speed • Belt slip on the pulley 	<ul style="list-style-type: none"> • Reduce working speed • Readjust belt tension
Frame noise	<ul style="list-style-type: none"> • Loose bolts • Cracks or initiation of frame damage 	<ul style="list-style-type: none"> • Tighten bolts • Have it repaired in specialized workshops
Gearbox noise	<ul style="list-style-type: none"> • Lack of oil • Worn gears • Worn bearings 	<ul style="list-style-type: none"> • Fill to level • Replace • Replace
Vibration	<ul style="list-style-type: none"> • Broken or worn flails • Unbalanced rotor • Worn rotor bearings 	<ul style="list-style-type: none"> • Replace • Have it replaced in authorized workshops • Have them replaced in authorized workshops
Belts overheating	<ul style="list-style-type: none"> • Flails touching the ground • Working speed unsuitable to amount of material to cut 	<ul style="list-style-type: none"> • Adjust cut height • Reduce speed
Early wearing of the flails	<ul style="list-style-type: none"> • Flails touching the ground 	<ul style="list-style-type: none"> • Adjust height of cut

REPLACING THE PARTS

Before carrying out any work, it is mandatory to:

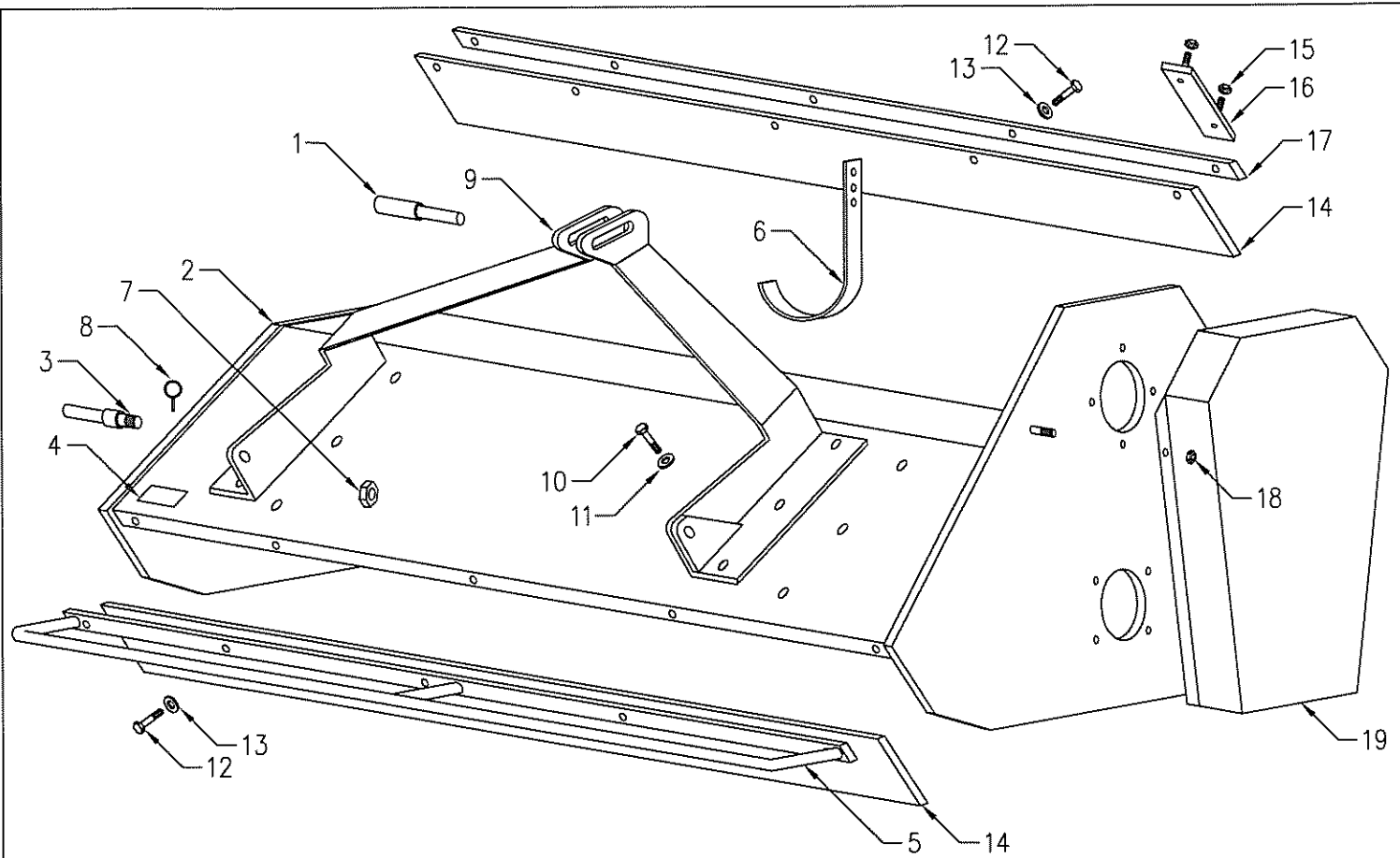
- Lower the shredder to the ground
- Disconnect the power takeoff and take the starting key out
- Wear working gloves

When the flails are worn, they must all be replaced. In case of a partially broken flail, it is advisable to replace the broken one and the one diametrically opposite to it, in order to maintain the balance.

Belt Replacement

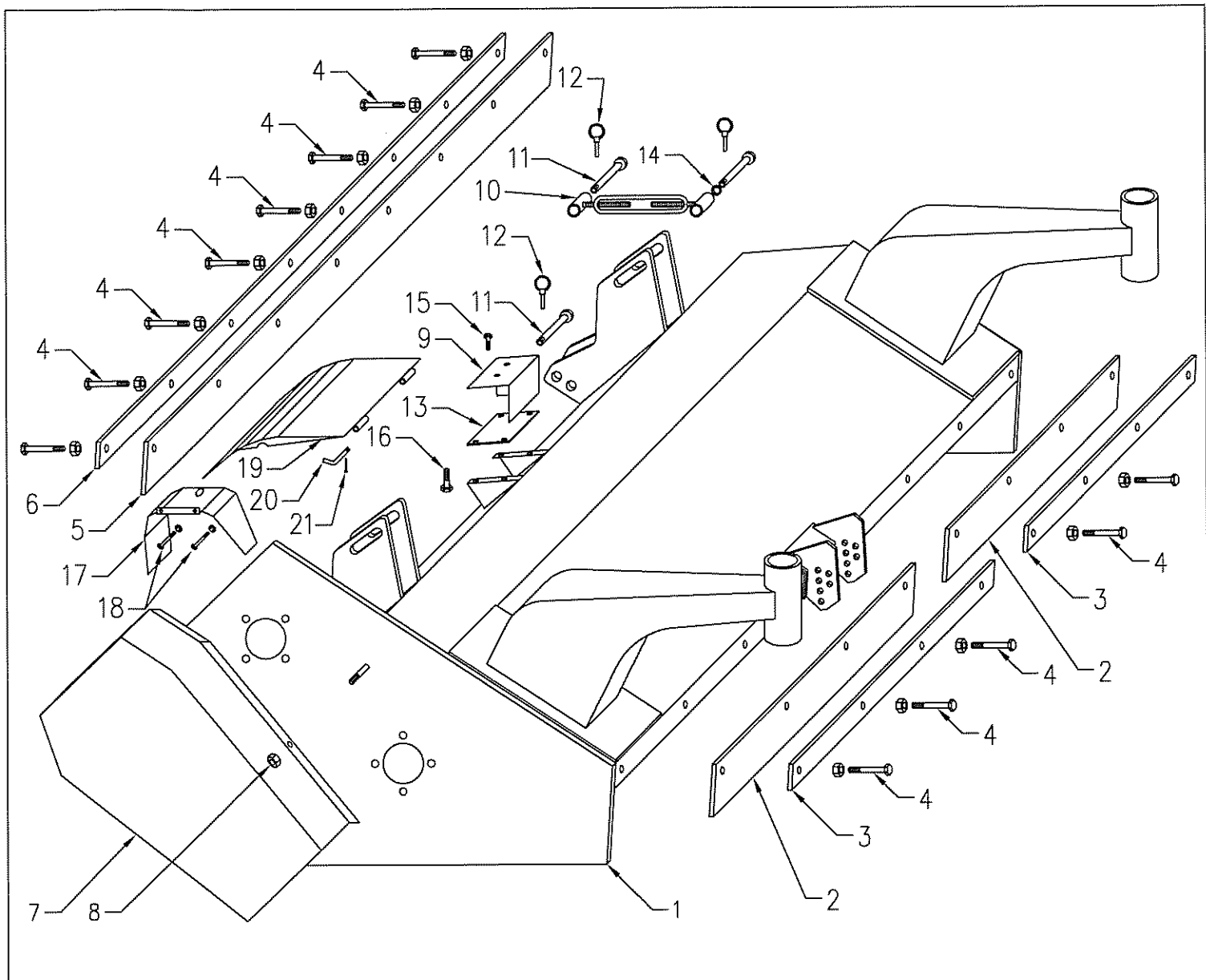
- Remove the belt guard
- Slacken the nut and the screw
- After replacing the nut belts proceed in reverse order.
- As regards belt tension

IMPORTANT: More complex operations must be carried out in authorized workshops.



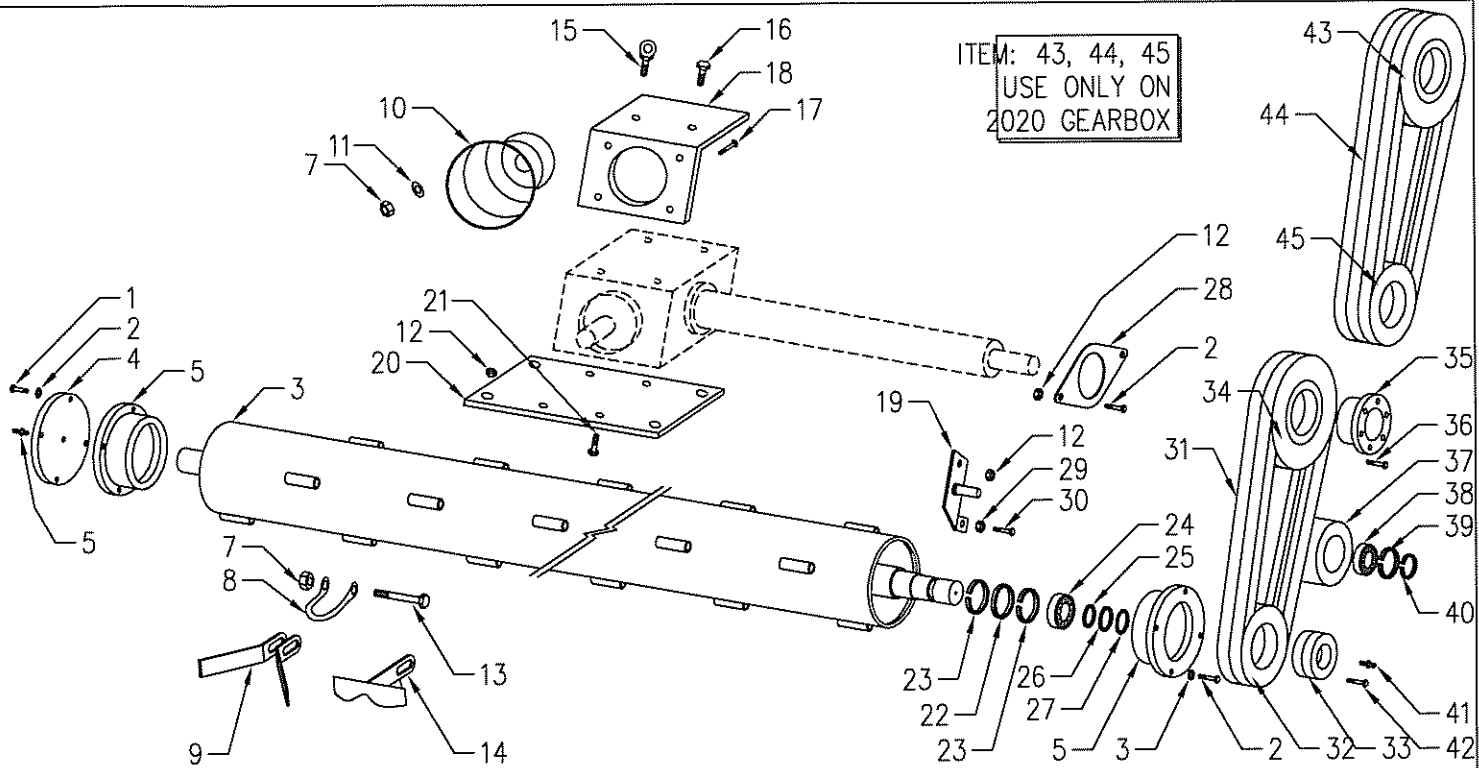
FRAME - FME105, FME125, FME155

ITEM	PART No.	No.OFF FME105	No.OFF FME135	No.OFF FME155	DESCRIPTION
1	SF0 ME125110100	1	1	1	3RD POINT PIN
2	SF0 ME155010100			1	FRAME
2	SF0 ME105010100	1			FRAME
2	SF0 ME125010100		1		FRAME
3	SF0 TE12110200	2	2	2	PIN
4	SF0 1801182	1	1	1	PLATE
5	SF0 ME125170300		1		GUARD
5	SF0 ME105170300	1			GUARD
5	SF0 ME155170300			1	GUARD
6	SF0 F17070400	1	1	1	BRACKET PTO SHAFT
7	SF0 0310010	2	2	2	SELF LOCKING NUT
8	SF0 0340008	2	2	2	PIN
9	SF0 ME125090100	1	1	1	3 POINT LINKAGE
10	SF0 0303004	6	6	6	BOLT
11	SF0 0322004	6	6	6	WASHER
12	SF0 0342005Z	10	10	12	BOLT
13	SF0 0322003Z	10	10	12	WASHER
14	SF0 ME125170200		2		GUARD
14	SF0 ME155170200			2	GUARD
14	SF0 ME105170200	2			GUARD
15	SF0 0310003	4	4	4	SELF LOCKING NUT
16	SF0 ME125070300	2	2	2	PLATE
17	SF0 ME155080200			1	ROD
17	SF0 ME105080200	1			ROD
17	SF0 ME105080200		1		ROD
18	SF0 0310002	2	2	2	SELF LOCKING NUT
19	SF0 ME125030100	1	1	1	CASING



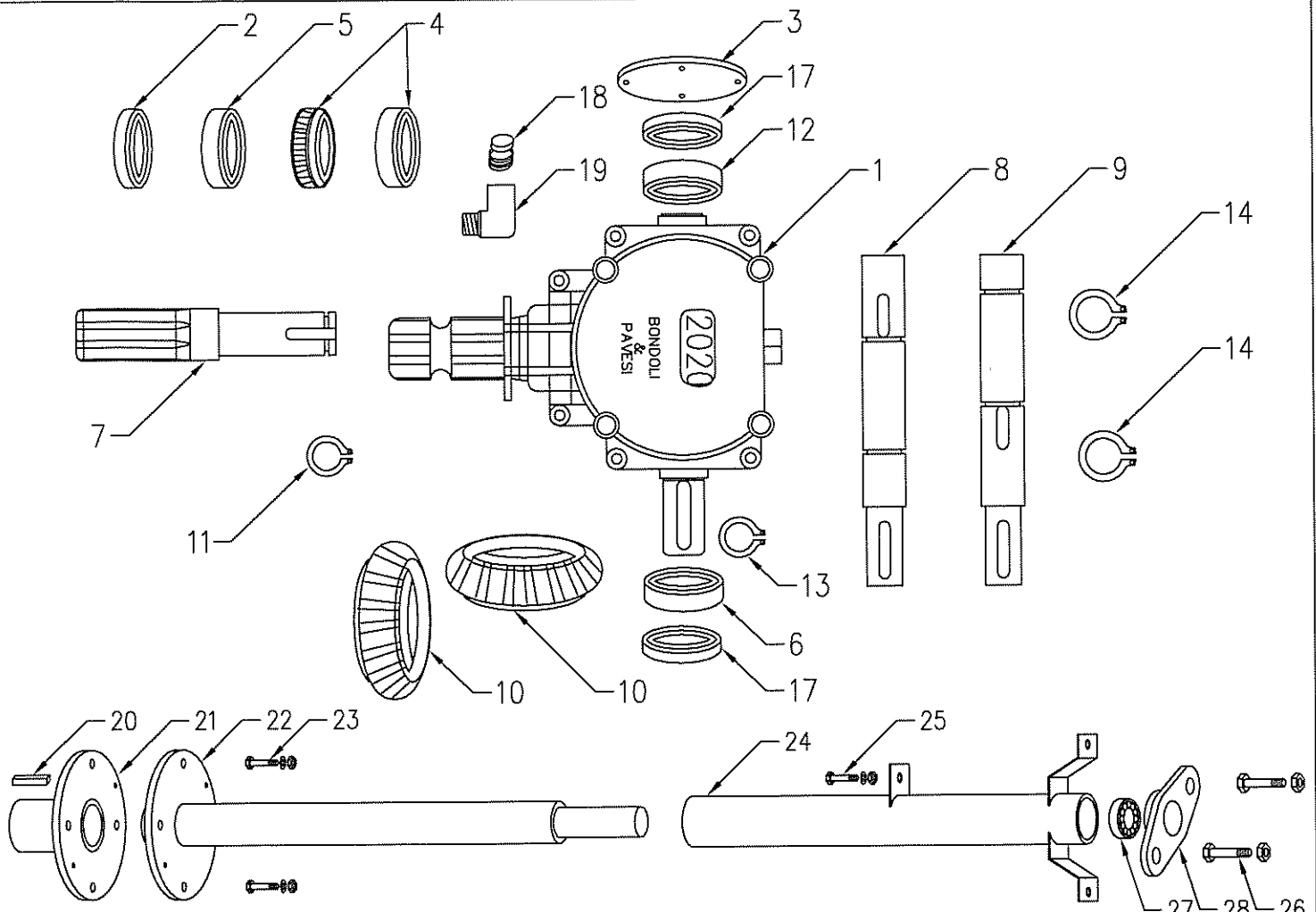
FRAME - FME105, FME125, FME155 - NEW MODEL

ITEM	PART No.	No.OFF FME105	No.OFF FME135	No.OFF FME155	DESCRIPTION
1	SF07210	1			FRAME
1	SF7211		1		FRAME
1	SF7212			1	FRAME
2	SF7213	2			FRONT RUBBER FLAP
2	SF7214		2		FRONT RUBBER FLAP
2	SF7215			2	FRONT RUBBER FLAP
3	SF7216	2			FRONT STEEL PLATE FOR RUBBER FLAP
3	SF7217		2		FRONT STEEL PLATE FOR RUBBER FLAP
3	SF7218			2	FRONT STEEL PLATE FOR RUBBER FLAP
4	S03478/S01025	AS REQ.	AS REQ.	AS REQ.	BOLT AND NULOCK NUT
5	SF07219	2			REAR RUBBER FLAP
5	SF7220		2		REAR RUBBER FLAP
5	SF7221			2	REAR RUBBER FLAP
6	SF7222	2			REAR STEEL PLATE FOR RUBBER FLAP
6	SF7223		2		REAR STEEL PLATE FOR RUBBER FLAP
6	SF7224			2	REAR STEEL PLATE FOR RUBBER FLAP
7	SF7225	1	1	1	CASING
8	S1025	1	1	1	NULOCK NUT SUIT CASING
9	SF07226	1	1	1	COVER
10	SF027141	2	2	2	TURN BUCKLE BUSH ON
11	S04009	6	6	6	PIN
12	S04011	6	6	6	LYNCH PIN
13	SF07227	1	1	1	GEARBOX PLATE
14	S4233	1	1	1	WASHER SUIT PIN
15	S3123	2	2	2	BOLT SUIT COVER
16	S3478	4	4	4	BOLT SUIT GEARBOX
17	SF7210-1	1	1	1	SHAFT COVER - AS FROM JUNE 2007
18	SF7210-2	2	2	2	BOLT & BUT SUIT COVER
19	SF7210-3	1	1	1	SHAFT COVER - AS FROM JUNE 2007
20	SF7210-4	2	2	2	PIN SUIT COVER
21	SF7210-5	2	2	2	SPLIT PIN



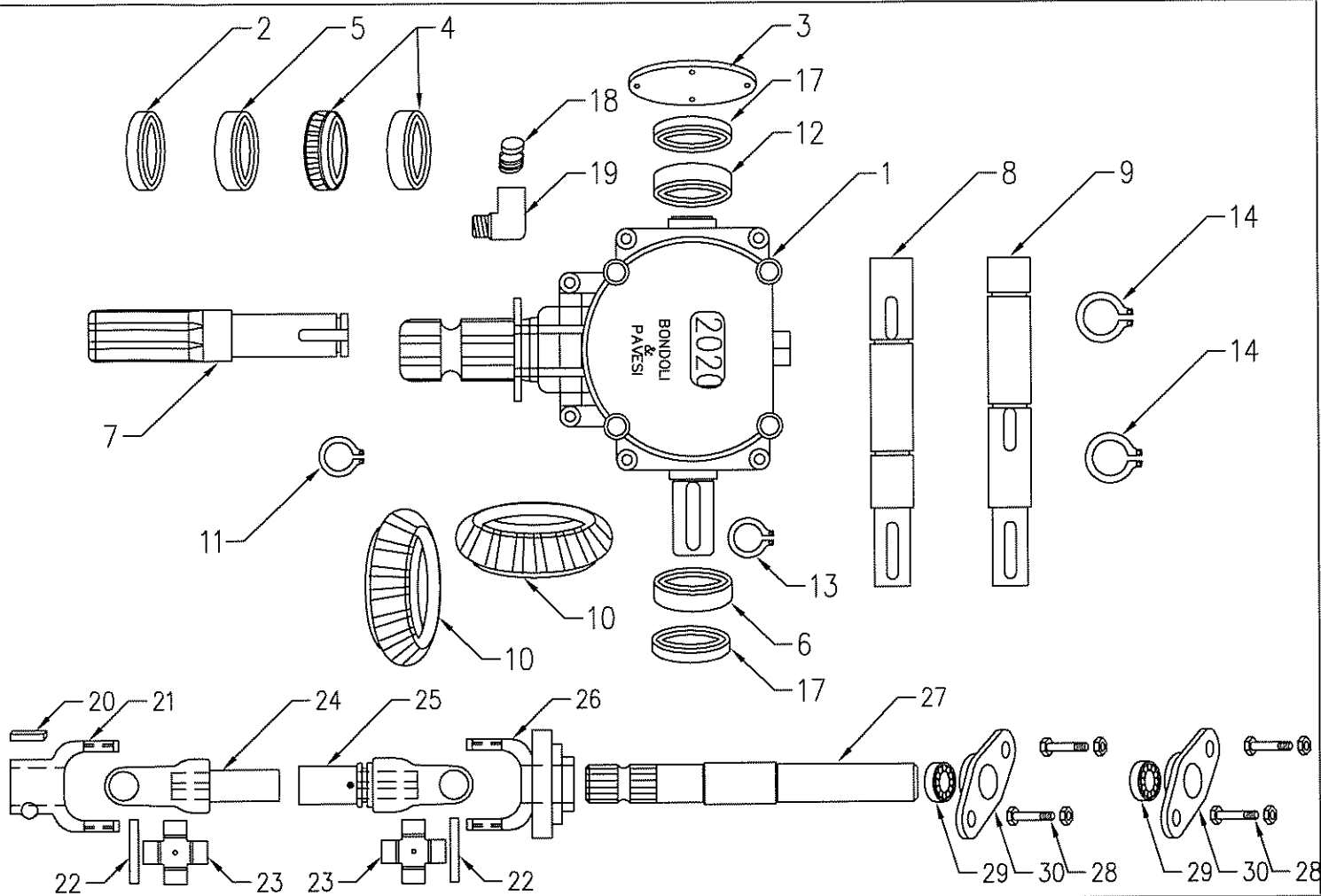
TRANSMISSION UNIT - FME105, FME125, FME155

ITEM	PART No.	No.OFF FME105	No.OFF FME125	No.OFF FME155	DESCRIPTION
1	SFO 0342011	8	8	8	BOLT
2	SFO 0322033	6	6	6	WASHER
3	SFO ME155020100			1	ROTOR
3	SFO ME125020100		1		ROTOR
3	SFO ME105020100	1			ROTOR
4	SFO ME125170100	1	1	1	GUARD
5	SFO ME125250100	2	2	2	BRACKET
6	SFO 0337001	1	1	1	GREASE NIPPLE
7	SFO 0310001	28	32	40	SELF LOCKING NUT
8	SFO 0901118	24	28	36	SHACKLE
9	SFO 0901133	48	56	72	BLADE
10	SFO 1701011	1	1	1	GUARD
11	SFO 0349001	4	4	4	WASHER
12	SFO 0310002	4	4	4	SELF LOCKING NUT
13	SFO 0301013	24	28	36	BOLT
14	SFO 0901072	24	28	36	GARDEN BLADE
15	SFO 0354001	1	1	1	EARED SCREW
16	SFO 0342004Z	1	1	1	BOLT
17	SFO 0347005Z	4	4	4	BOLT
18	SFO ME125070400	1	1	1	BRACKET
19	SFO ME125280100	1	1	1	BRACKET
20	SFO ME125070100	1	1	1	PLAT
21	SFO 0312002	4	4	4	BOLT
22	SFO 0201058	2	2	2	OIL SEAL
23	SFO 0323062	4	4	4	RING
24	SFO 0112001	2	2	2	BEARING
25	SFO 0324032	1	1	1	RING
26	SFO 0201022	1	1	1	RING
27	SFO 0323053	1	1	1	RING
28	SFO ME125150100	1	1	1	ANCHOR PIPE
29	SFO 0307002	1	1	1	SELF LOCKING NUT
30	SFO 0342011	1	1	1	BOLT
31	SFO 0806001	2	2	2	BELT
32	SFO 0701110	1	1	1	PULLEY
33	SFO 1601021	1	1	1	CLAMPING
34	SFO 0701109	1	1	1	PULLEY
35	SFO 1601022	1	1	1	CLAMPING
36	SFO 0317006	3	3	3	BOLT
37	SFO ME125280200	1	1	1	GUIDE PULLEYS
38	SFO 0105028	1	1	1	BEARING
39	SFO 0323033	1	1	1	RING
40	SFO 0324017	1	1	1	RING
41	SFO 0337004	1	1	1	GREASE NIPPLE
42	SFO 0316007	6	6	6	BOLT
43	SFO7228	1	1	1	PULLEY TRIPLE - USE ONLY ON 2020 GEARBOX
44	SFO7208	3	3	3	BELT - USE ONLY ON 2020 GEARBOX
45	SFO7229	1	1	1	PULLEY TRIPLE - USE ONLY ON 2020 GEARBOX



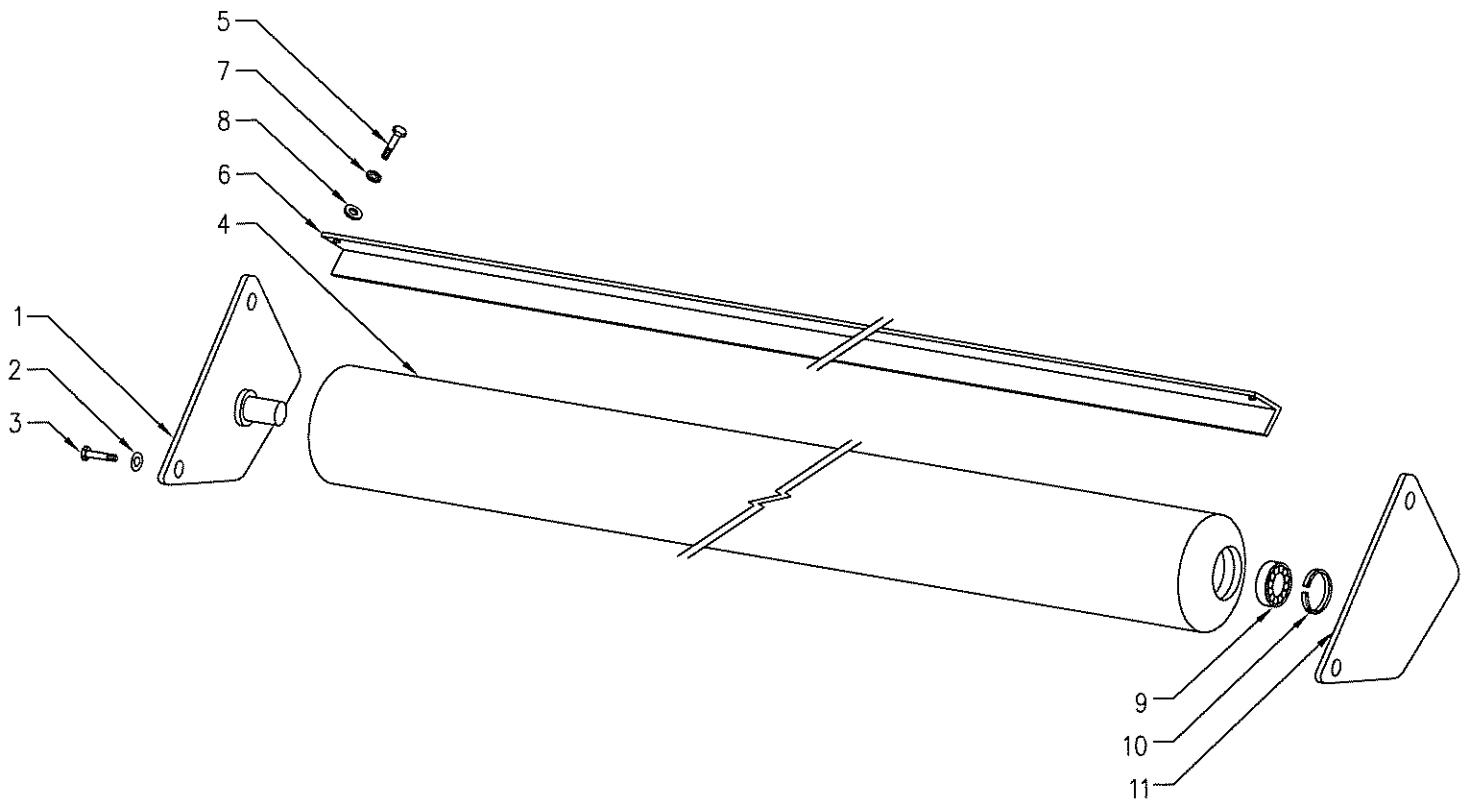
ARBOX ASSEMBLY UPDATE - CAST IRON 2020 - FME105, FME125, FME

ITEM No.	PART No.	DESCRIPTION	No.OFF
1	S5655	2020 BYPY GEARBOX COMPLETE	1
3	S5657	SEAL PLATE	1
4	S5658	INPUT BEARING REAR - CUP & CONE	1
5	S5659	INPUT BEARING FRONT	1
6	S5658	LOWER BEARING	1
7	S5661	INPUT SHAFT 1 3/8 X 6	1
8	S5662	OUTPUT SHAFT (CHECK ROTATION)	1
9	S5663	OUTPUT SHAFT (CHECK ROTATION)	1
10	S5664	GEAR SET 1:1 RATIO	PAIR
11	S5665	CIRCLIP SET INPUT	1
12	S5659	UPPER BEARING	1
13	S5667	CIRCLIP OUTPUT	2
14	S5668	CIRCLIP OUTPUT BEARING RETAINER	2
15	S5669	SHIM (55 X 61)	2
16	S5670	SHIM (30 X 40)	2
17	S5671	OUTPUT SEAL (Late Model after July 2001)	2
18	S6547	BREATHER	1
19	S5672	ELBOW	1
20	S03774	KEYWAY	1
21	SF07207	HUB	1
22	SF07230	SHAFT EXTENSION	1
23	S3479/S4242	BOLT, NUT AND SPRING WASHER	4
24	SF07209	TUBE	1
25	S3478/S4242	BOLT, NUT AND SPRING WASHER	1
26	S3341/S1003	BOLT AND NUT	2
27	SF07205	BEARING	1
28	S01609	BEARING HOUSING	1



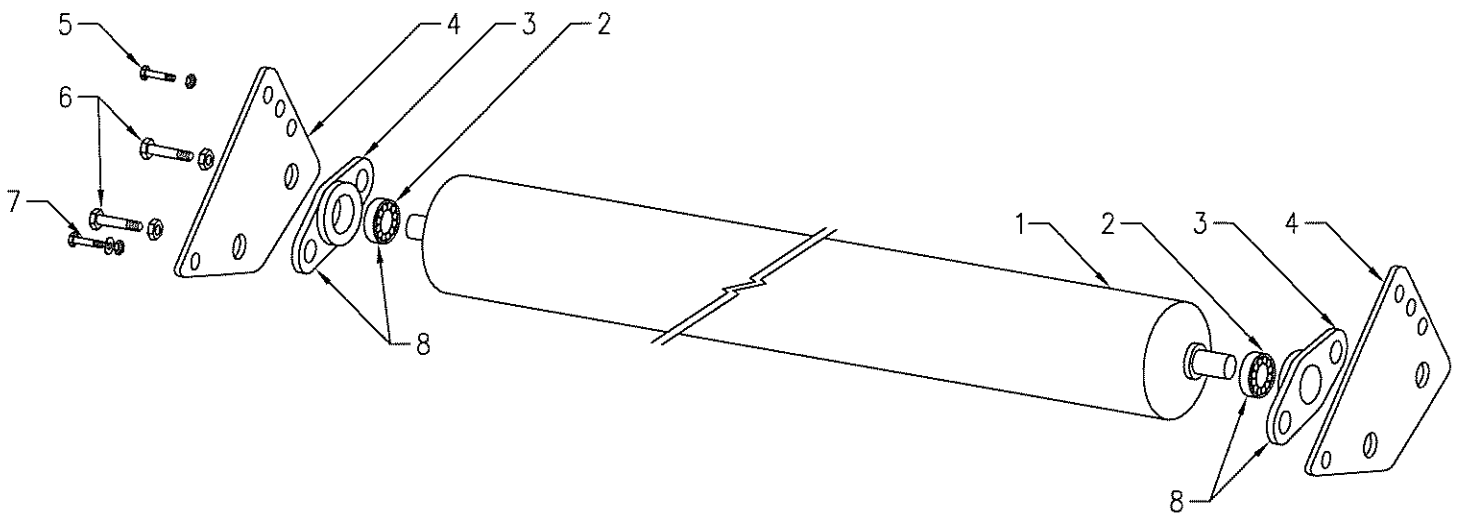
GBOX ASSY JUNE 2007 - CAST IRON 2020 - FME105, FME125, FME155

ITEM No.	PART No.	DESCRIPTION	No.OFF
1	S5655	2020 BYPY GEARBOX COMPLETE	1
3	S5657	SEAL PLATE	1
4	S5658	INPUT BEARING REAR - CUP & CONE	1
5	S5659	INPUT BEARING FRONT	1
6	S5658	LOWER BEARING	1
7	S5661	INPUT SHAFT 1 3/8 X 6	1
8	S5662	OUTPUT SHAFT (CHECK ROTATION)	1
9	S5663	OUTPUT SHAFT (CHECK ROTATION)	1
10	S5664	GEAR SET 1:1 RATIO	PAIR
11	S5665	CIRCLIP SET INPUT	1
12	S5659	UPPER BEARING	1
13	S5667	CIRCLIP OUTPUT	2
14	S5668	CIRCLIP OUTPUT BEARING RETAINER	2
15	S5669	SHIM (55 X 61)	2
16	S5670	SHIM (30 X 40)	2
17	S5671	OUTPUT SEAL (Late Model after July 2001)	2
18	S6547	BREATHER	1
19	S5672	ELBOW	1
20	S3774	KEY WAY	1
21	SF7230-1	SHAFT	1
22	S2173	ROLL PIN	1
23	S5348	UNI JOINT	1
24	S5345	BAR YOKE HI SPEED MALE	1
25	S5344	BAR YOKE HI SPEED FEMALE	1
26	SF7207-1	YOKE	1
27	S5347	YOKE 1 3/8 x 6 SPLINE	1
28	S3341/S1003	BOLT AND NUT	2
29	SF07205	BEARING	1
30	S01609	BEARING HOUSING	1



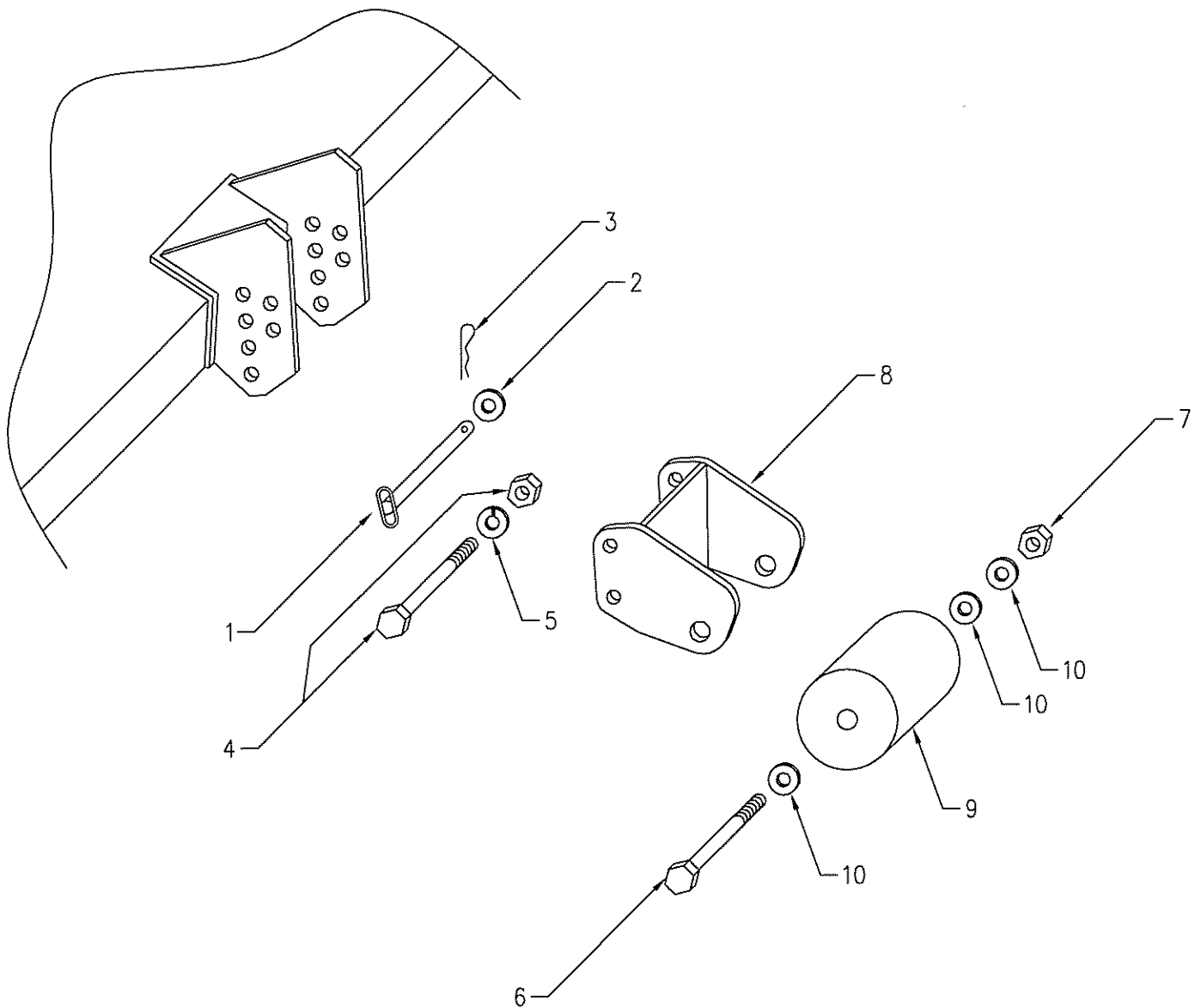
ROLLER - FME105, FME125, FME155

ITEM	PART No.	No.OFF FME105	No.OFF FME125	No.OFF FME155	DESCRIPTION
1	SF0 ME125100100	1	1	1	BRACKET
2	SF0 0322004	4	4	4	WASHER
3	SF0 0343003	4	4	4	BOLT
4	SF0 ME155160100			1	ROLLER
4	SF0 ME125160100		1		ROLLER
4	SF0 ME105160100	1			ROLLER
5	SF0 0347005Z	2	2	2	BOLT
6	SF0 ME155240100			1	SCRAPER
6	SF0 ME125240100		1		SCRAPER
6	SF0 ME105240100	1			SCRAPER
7	SF0 0322001	2	2	2	WASHER
8	SF0 0321002	2	2	2	WASHER
9	SF0 0112003	2	2	2	BEARING
10	SF0 0323043	2	2	2	RING
11	SF0 ME125100200	1	1	1	BRACKET



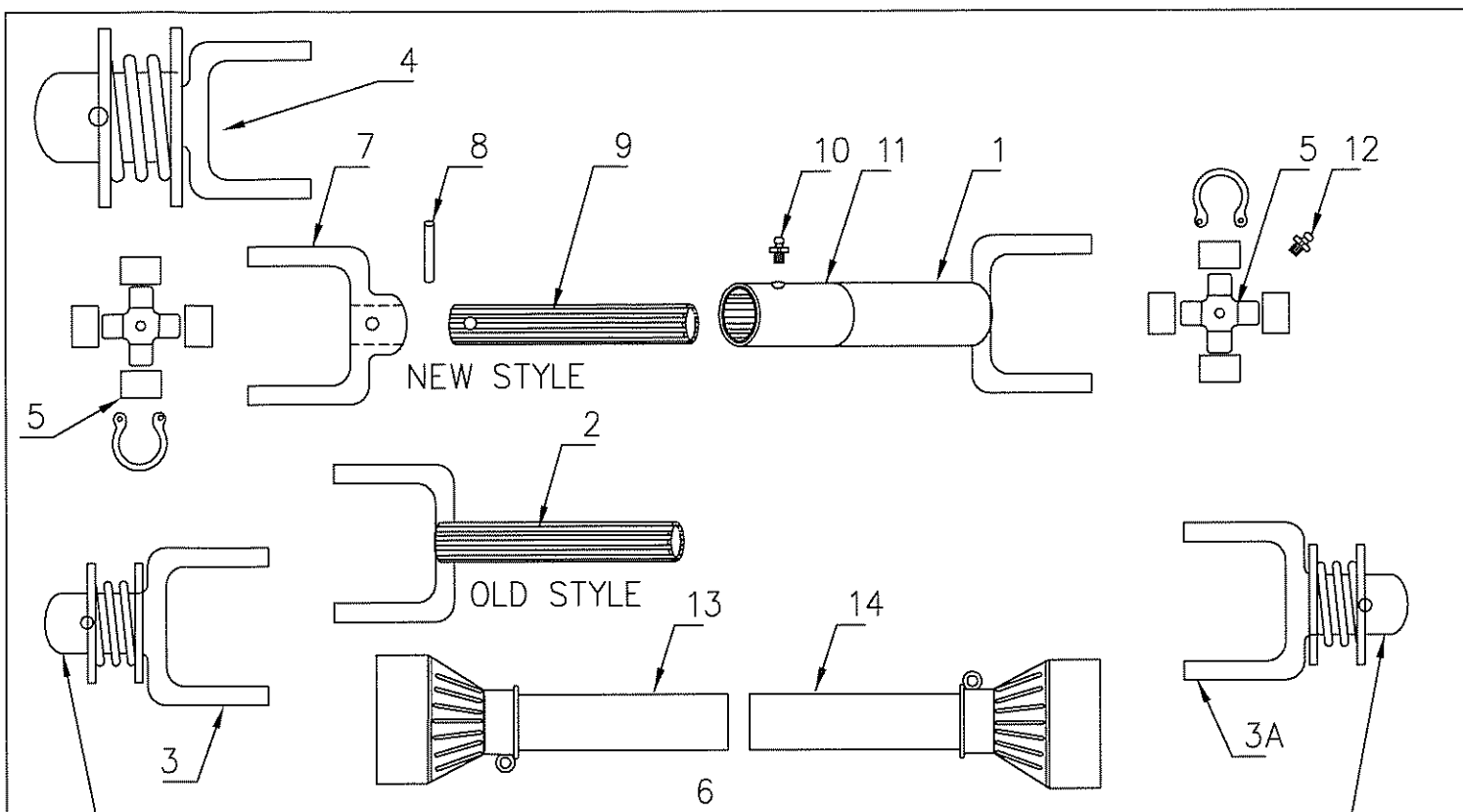
DJUSTING ROLLER - FME105, FME125, FME155 - NEW MODE

ITEM	PART No.	No.OFF FME105	No.OFF FME125	No.OFF FME155	DESCRIPTION
1	SF07201	1			ROLLER
1	SF07202		1		ROLLER
1	SF07203			1	ROLLER
2	S04198	2	2	2	BEARING TRIPLE SEAL
3	S04197	2	2	2	BEARING HOUSING
4	SF07204	2	2	2	ADJUSTING PLATE
5	S3340	2	2	2	ADJUSTING BOLT AND NUT
6	S3341/S1003	4	4	4	BEARING BOLT AND NUT
7	S3388	1	1	1	PIVOT BOLT, NUT AND SPRING WASHER
8	S04416	2	2	2	ROLLER BEARING COMPLETE ASSY.



FRONT ROLLER ASSY. - FME105, FME125, FME150

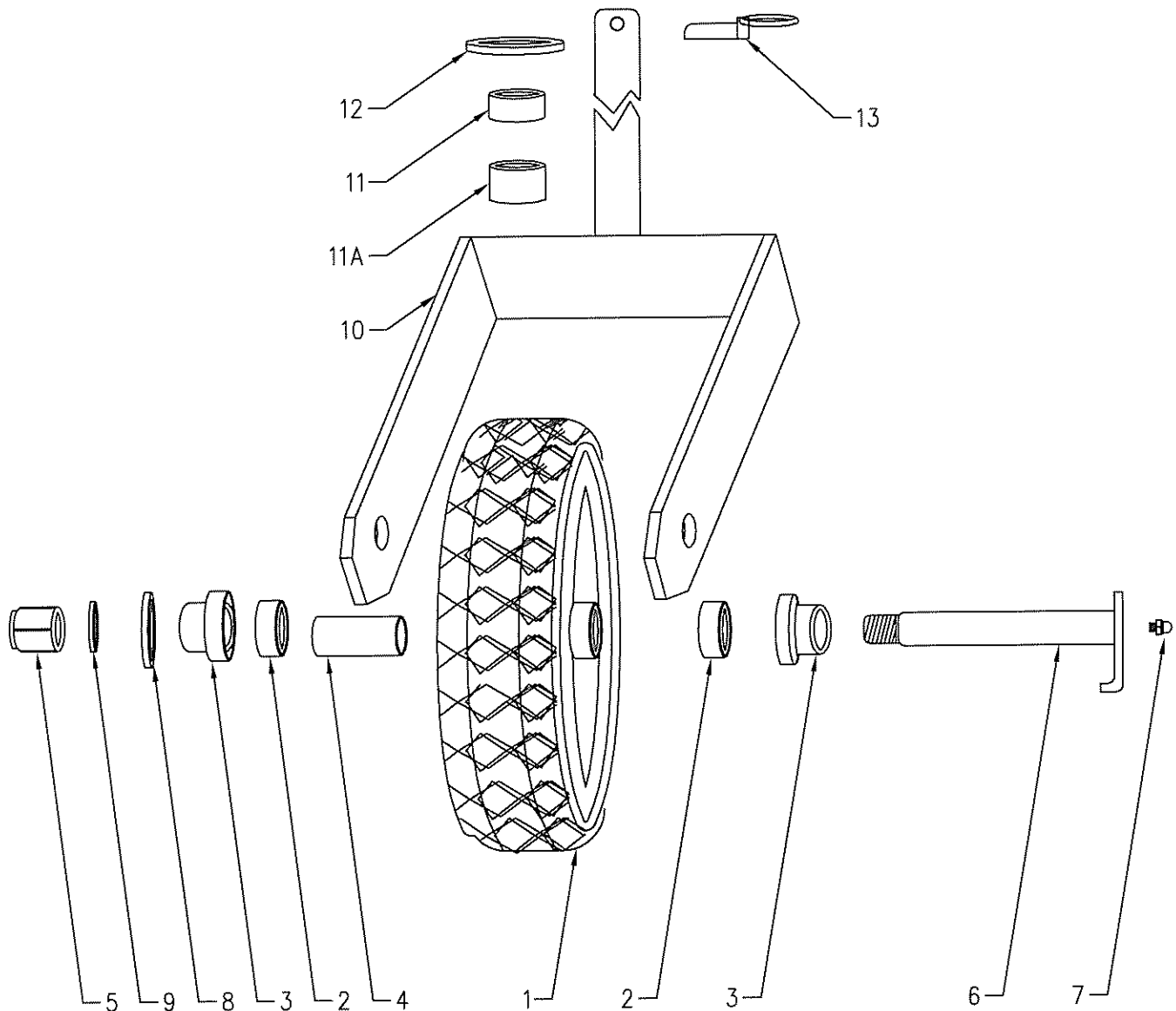
ITEM	PART No.	DESCRIPTION	No.OFF
1	S5209-3	ADJUSTING PIN	1
2	S4224	WASHER	1
3	S1147	R CLIP	1
4	S3217	BOLT, NUT	1
5	S4243	SPRING WASHER	1
6	S3560	AXLE SUIT FRONT ROLLER	1
7	S5067	NUT NYLOC	1
8	S5209	ROLLER BRACKET	1
9	S5394	SCALPING ROLLERS (NYLON)	1
10	S4226	WASHER	3



DRIVE SHAFT ASSEMBLY (BYPY) - FME105, FME125, FME155

ITEM	PART No.	DESCRIPTION	No.OFF
1	S5344	TUBE YOKE (HI - SPEED)	1
2	S5345	BAR YOKE (HI - SPEED) - OLD STYLE	1
3	S5361	YOKE QR 1" X 10 SPLINE (KUBOTA)	1
3A	S5346	YOKE QR 1" X 15 SPLINE (FORD / J.DEERE)	1
4	S5347	YOKE QR 13/8" X 6 SPLINE (ISEKI)	2
5	S5348	UNI JOINT	2
6	S5349	HI SPEED DRIVE SHAFT COMPLETE ### (FORD / J.DEERE) ADVISE LENGTH	1
6	S5354	HI SPEED DRIVE SHAFT COMPLETE ### (ISEKI)	1
6	S5362	HI SPEED DRIVE SHAFT COMPLETE ### (KUBOTA)	1
7	S5225	YOKE - NEW STYLE	1
8	S2173	ROLL PIN - NEW STYLE	1
9	S5224	BAR - NEW STYLE	1
10	S1261	GREASE NIPLE	1
11	S5219	WELD IN DRIVE NIB	1
12	S5276	GREASE NIPLE - 90 RND	1
13	S5217	D/SHAFT Cover Female suit HI Speed Shaft (Bypy)	1
14	S5218	D/SHAFT Cover Male suit HI Speed Shaft (Bypy)	1

NOTE:- STATE LENGTH & YOKES REQUIRED WHEN
ORDERING P/No. S5349, S5354, S5362 DRIVE SHAFT COMPLETE



WHEEL ASSEMBLIES FRONT PNEUMATIC - FME105, FME125, FME150

ITEM	PART No.	DESCRIPTION	No.OFF
1	S5300	WHEEL ASSY. COMPLETE (13 X 500 X 6)	1
2	S5302	BEARING (205 - 25mm)	2
3	S5303	PIPE SPACER & DUST CAP	2
4	S5304	BEARING SPACER (INTERNAL)	1
5	S5067	NYLOC NUT 3/4" UNC	1
6	S5305	AXLE (25mm DIA)	1
7	S1261	GREASE NIPPLE STRT (1/4" BSF)	1
8	S2245	WASHER 1"	1
9	S2230	WASHER 3/4"	1
10	S5289	FRONT WHEEL FORK (NEW SHORT SERIES)	1
11	S3861	FORK SPACERS - 1"	3
11A	S3861-1	FORK SPACERS - 3/4"	3
12	S1008	WASHER 1 1/4"	1
13	S4011	FORK LYNCH PIN	1
14	S5297	TYRE & TUBE ONLY (13 x 500 x 6) - NOT SHOWN	1
15	S5301	RIM ONLY (600 x 6) - NOT SHOWN	1

WARRANTY

Your Superior Product is covered by **Manufacturers Warranty of 180 days** against faulty parts and or workmanship. Warranty does not cover operator abuse, or damage to the cutting head assembly (head flats, blades etc.) Should a warranty type problem develop with your new Slasher **contact your local dealer** who will refer the problem to SUPERIOR EQUIPMENT. Items for any warranty inspection must be **forwarded on a pre-paid basis. Goods supplied are on a charge basis, subject to warranty inspection.**

OWNERS NOTES

Model _____

Serial No. _____

Lubrication Dates _____

Spare Part References
