

**INSTRUCTION MANUAL
AND PARTS LIST
FOR
MODELS
LC270 Slashers**

DATE: _____

VERIFIED: _____

INDEX_LC270

	PAGE
• CORPORATE PHILOSOPHY	1
• OPERATIONAL SAFETY INSTRUCTIONS	2 - 4
• HAZARDS & SAFETY GUIDE	3 - 4
• OPERATING, CARE & MAINTENANCE	5 - 6/6A/6B
• COMPLETE SLASHER ASSEMBLY	7/8/9
• CUTTING HEAD ASSEMBLIES	10
• GEARBOX 75HP 1:46 RATIO	11
• CENTRE GEAR BOX -2100	12
• 4-PLATE CLUTCH ASSEMBLY	13
• 1410 UNIVERSAL JOINTS	14
• DRIVE SHAFT 8 SERIES	15
• CASTOR ASSEMBLY	16
• FRONT WHEEL ASSEMBLY	17
• OWNER'S NOTES/ WARRANTY CARD	18

INSTRUCTIONS for LC270SLASHER

Getting the best of your Superior

LINKAGE SLASHERS

SETTING UP :-

INITIAL START UP

Check Gearboxes for oil :: **Recommended OIL** :- **85w -- 140 EP GEAR OIL**

Grease all grease points :: **Recommended Grease** :- **All Purpose Grease EPL 2**

See Maintenance Schedule Attached

LINKAGE LC270 ROTARY SLASHER

ATTACHING TRACTOR

Connect tractor to T.P.L. lower link pins, the Slasher is fitted with a stepped pin which will fit either cat 1, 22 mm (7/8") or cat 2, 30 mm (1 1/8"). Make sure tractor is fitted to correct size and place lynch pin in hole end of pin.

Tighten Anti-Sway Bars / Chains (must be firm, not rigid)

Connect Top Link to Tower.

Connect Driveshaft to P.T.O. on Tractor and Clutch / Gearbox on Slasher, make sure Clamp Bolts and or Q.r. Pins are located in respective grooves. (Failure to do this will result in Driveshaft Damage).

Tractor Lift Arms can vary in length. **CHECK OPERATIONAL LENGTH OF DRIVESHAFT BEFORE OPERATING SLASHER.**

Check length of Driveshaft at the highest and lowest positions of Tractor Lift arms.

The Driveshaft requires Sliding Movement of approx. 100 mm (4") to avoid bottoming or pulling apart at maximum operational lengths.

Caution Entering & Exiting Steep Gully's or Steep Ridges may result in Drive Shaft Bottoming out or Coming Apart, Check Drive Shaft Length before using Slasher in Extreme Conditions.

SETTING UP SLASHER

Your Superior Slasher will cut cleanest and requires less H.P. to drive when the front of the Slasher is set lower than the rear.

Your Superior Slasher is fitted with stepped blades as standard, these will require approx. 12 mm (1/2") lower setting at the front than the rear.

Adjust this setting to achieve the desired cutting result for your conditions.

SETTING UP SLASHER WITH REAR CASTOR WHEELS

Use the rear wheel adjustment to set the correct stance of the Slasher , Lower at the front, higher at the rear.

Adjust the Top Link to allow the Slasher to hinge at the tractor lower lift arms, so that the Slasher can follow reasonable ground contours. If top link is too short the Slasher will tend to lift off the ground resulting in an uneven cut.

CAUTION If top link is too long it may allow the Slasher to lift too high at the front which will cause damage to DRIVESHAFT safety covers or will result in bending DRIVESHAFT, requiring costly repairs.

OPERATION

Your Superior Slasher will be set up in the factory to suit your tractor's particular P.T.O. either 540 rpm or 1000 rpm.

For best mowing results maintain correct P.T.O. speeds.

In heavy going or awkward areas change back a gear or reduce forward speeds rather than reduce P.T.O. speed by throttling back.

Caution Entering & Exiting Steep Gully's or Steep Ridges may result in Drive Shaft Bottoming out or Coming Apart, Check Drive Shaft Length before using Slasher in Extreme Conditions.

TRAILING & LINKAGE ROTARY SLASHER

CLUTCH SETTINGS

Clutch settings are best set up in conditions that the Slasher is operating in.

- 1) Operate the Slasher in reasonably heavy conditions for approx. 20 to 30 minutes.
- 2) Disengage P.T.O., Switch Engine Off, Remove Key from Ignition.
- 3) Check temperature of clutch by placing hand on clutch, if clutch is warm to the touch it is about right, if it is hot to the touch the clutch has been slipping excessively and adjustment is necessary.

CLUTCH ADJUSTMENT

- 1) Undo lock nuts and tighten (increase spring tension) or loosen (decrease spring tension) each adjusting nut ½ to 1 turn.
- 2) Make sure each of the nuts is adjusted in turn.
- 3) **DO UP LOCK NUTS**
- 4) **REFER BACK TO (1) CLUTCH SETTINGS**

CAUTION *If clutch is too tight (cold) and there is no opportunity for clutch slip, costly damage to components may result.*

GENERAL MAINTENANCE

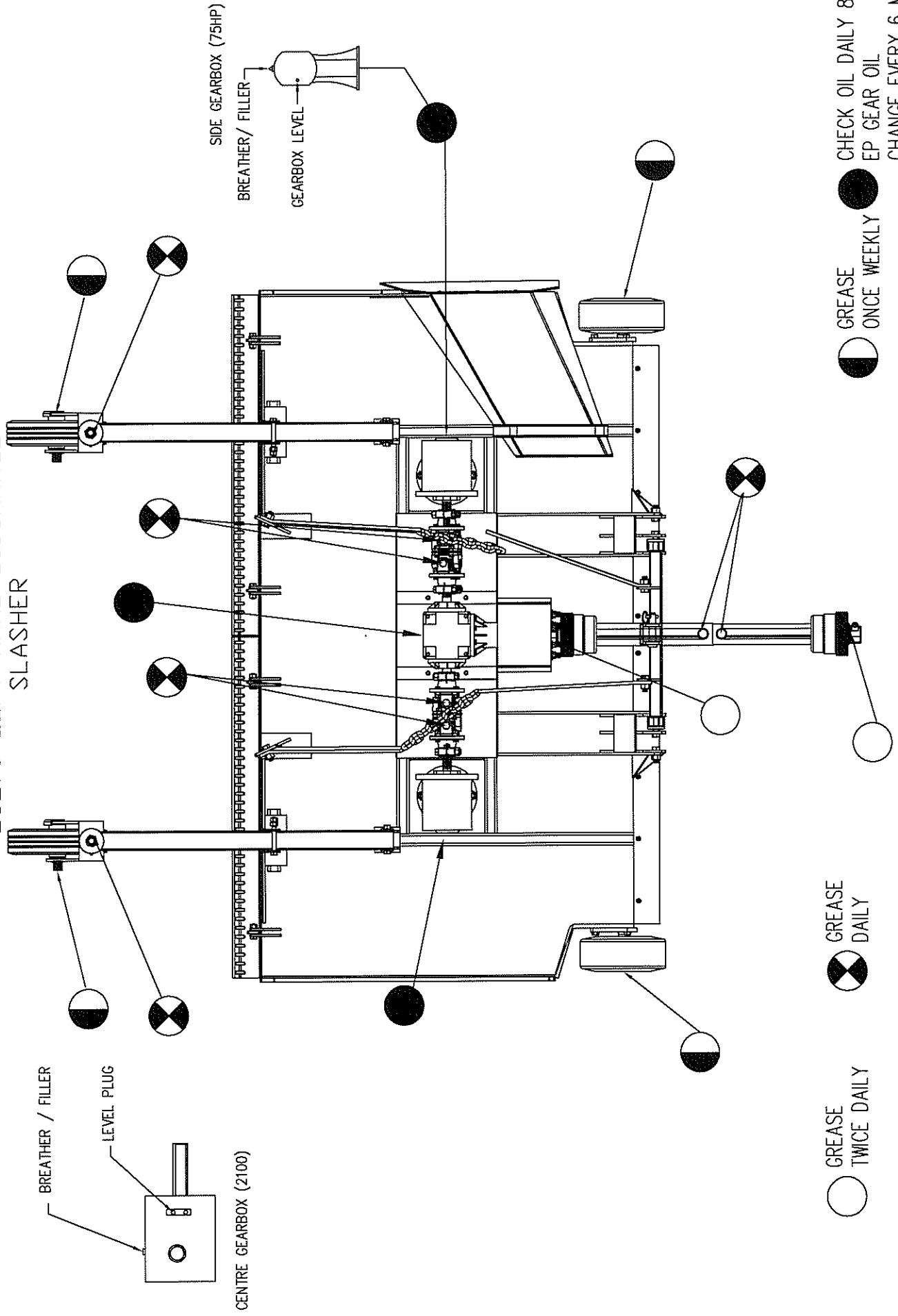
It is important that after approx. 30 to 60 minutes operation you should stop the Slasher and check all bolts and nuts for tightness. While all bolts are tightened on assembly, impact and working loads cause bedding in of components and early attention to all bolt and nuts will ensure trouble free operation of your Slasher.

Particular attention should be paid to clamp bolt, clutch bolts, cutting head bolts, blade bolts and nuts, as well as wheel nuts, bearings and castor assembly components.

Early inspection of components after initial start up, and adherence to the lubrication recommendations, will greatly assist in maintaining the durability of your investment.

READ MAINTENANCE SCHEDULE for CORRECT LUBRICATION INTERVALS

MAINTENANCE SCHEDULE LC270 LEFT HAND DISCHARGE SLASHER



BREATHER / FILLER

LEVEL PLUG

CENTRE GEARBOX (2100)

SIDE GEARBOX (75HP)

BREATHER / FILLER

GEARBOX LEVEL

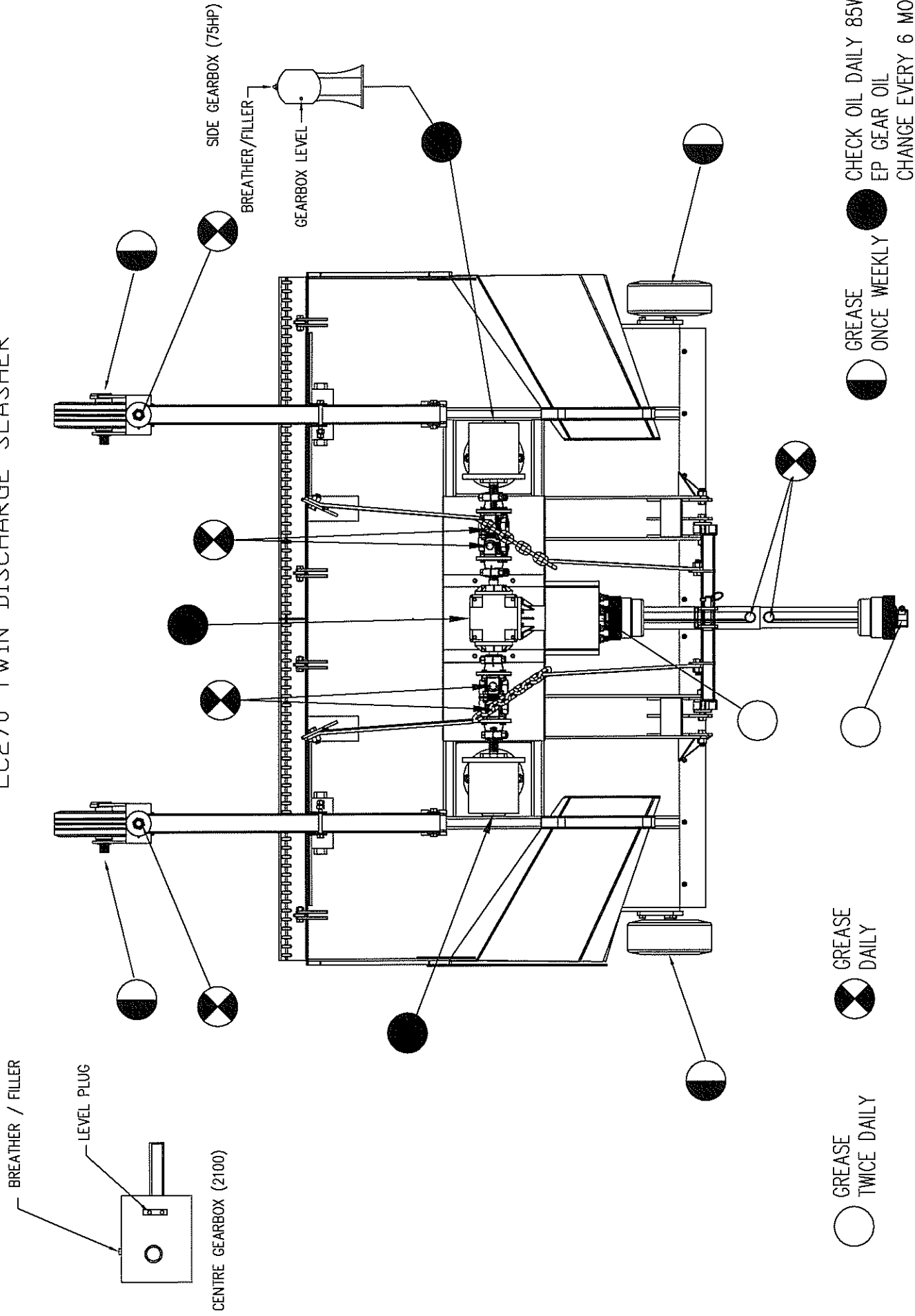
○ GREASE TWICE DAILY

◌ GREASE DAILY

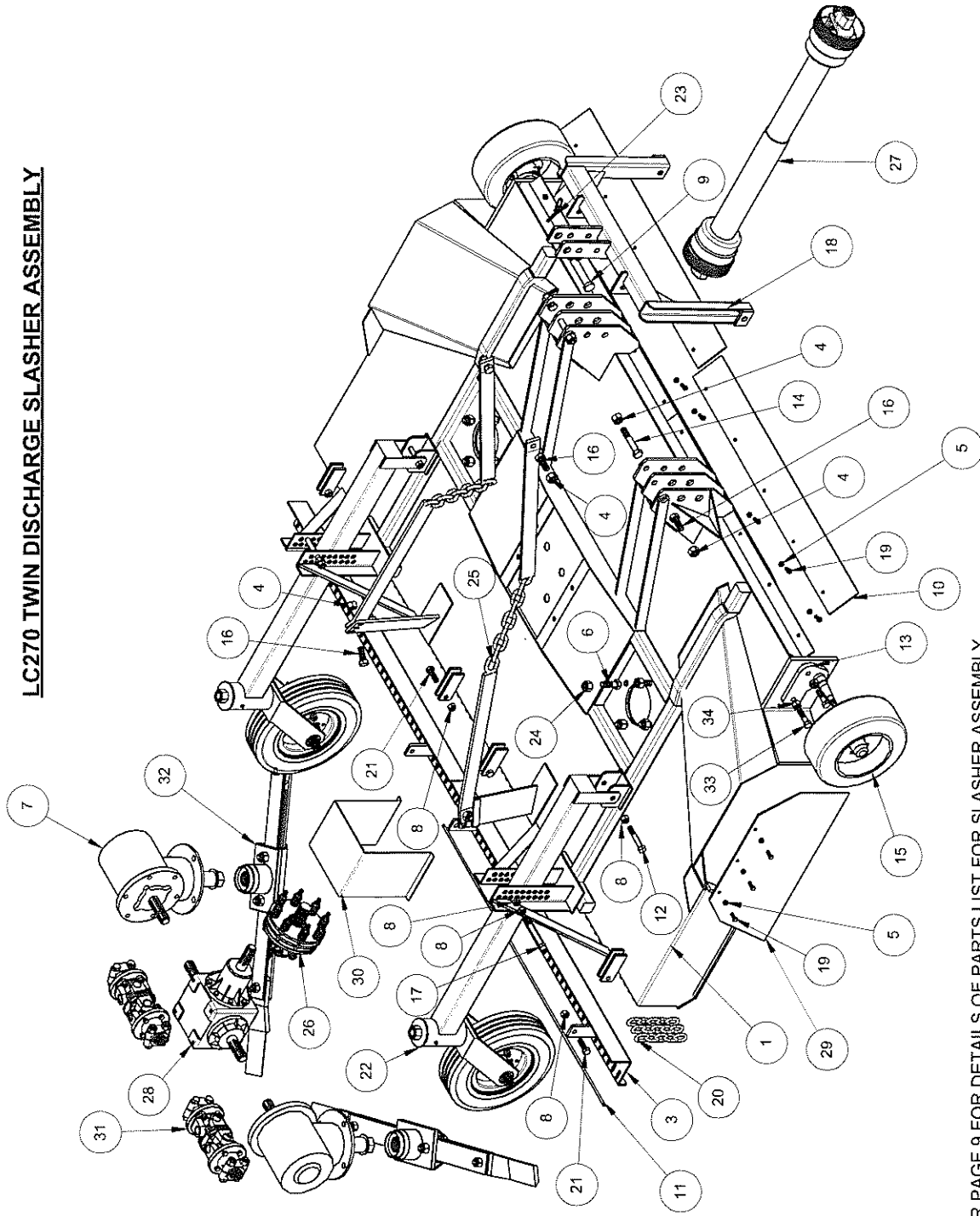
● GREASE ONCE WEEKLY

◌ CHECK OIL DAILY 85W - 140 EP GEAR OIL CHANGE EVERY 6 MONTHS

MAINTENANCE SCHEDULE LC270 TWIN DISCHARGE SLASHER

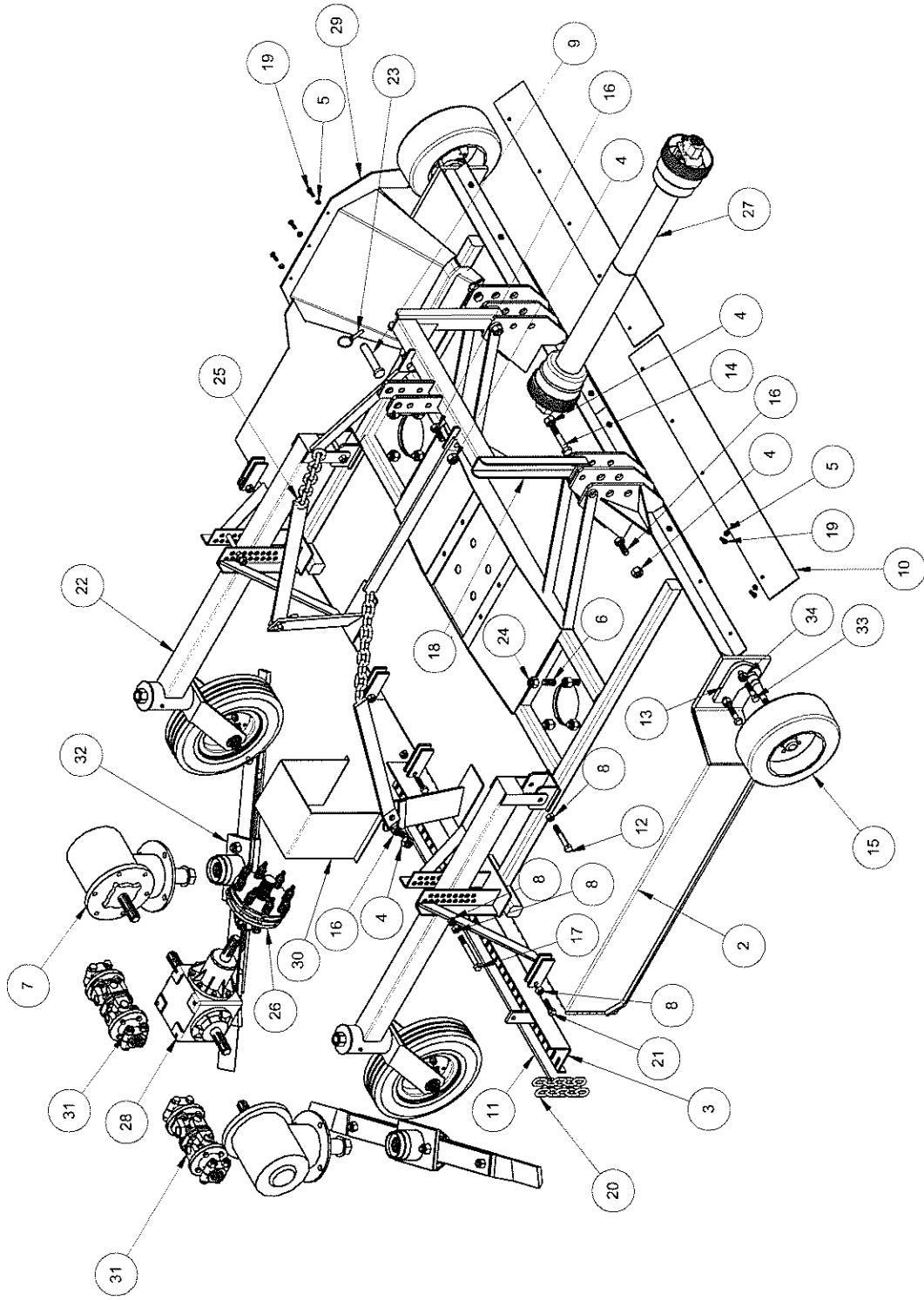


LC270 TWIN DISCHARGE SLASHER ASSEMBLY



* PLEASE REFER PAGE 9 FOR DETAILS OF PARTS LIST FOR SLASHER ASSEMBLY.

LC270 LEFT HAND DISCHARGE SLASHER



* PLEASE REFER PAGE 9 FOR PARTS DETAILS FOR SLASHER ASSEMBLY

LC270 SLASHER ASSEMBLY
(TWIN DISCHARGE/RIGHT HAND DISCHARGE)

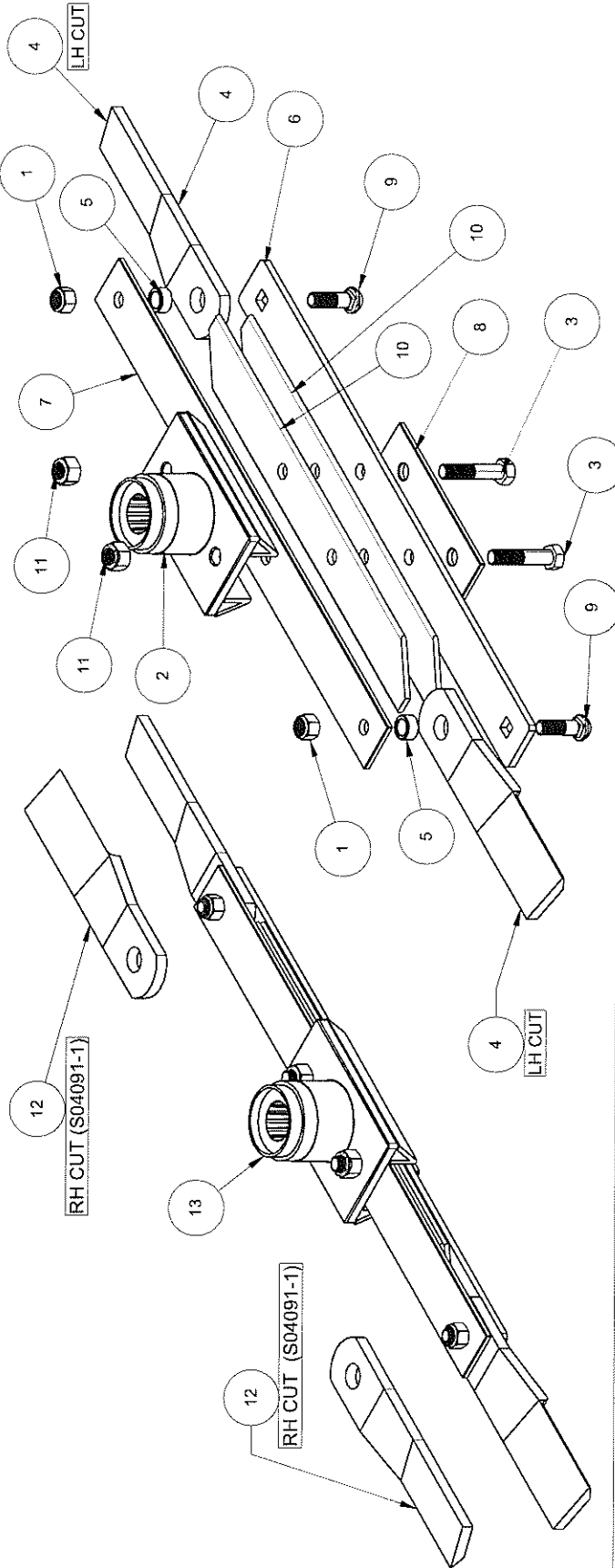
ITEM NO.	PART NO.	PART NAME	QTY	OFF
1	S04831	MAIN BODY TWIN DISCHARGE	1	
2	S04832	MAIN BODY RIGHT HAND DISCHARGE	1	
3	S04836	REAR CHAIN DEFLECTOR	2	
4	S03548-1	HEX NUT 3-4 UNC	8	
5	S01025	HEX NUT 3-8 UNC	11	
6	S03389	HEX BOLT 3-4 UNF 2 1-4 LONG	8	
7	S06178	GEARBOX 75hp	2	
8	S03536-1	HEX NUT 5-8 UNC	10	
9	S04132	TPL PINS 1 X 5 INCH LONG CAT 2	1	
10	S04833	RUBBER FLAP	2	
11	S04834	CHAIN RETAINER ROD DIA 8	2	
12	S03543	HEX BOLT 5-8 UNC 4 INCH LONG	2	
13	S06627-2	STUB AXLE BRACKET	2	
14	S03557	HEX BOLT 3-4 UNC 4 1-2 INCH LONG	2	
15	S04142-1	RUBBER TYRE	2	
16	S03550	HEX BOLT 3-4 UNC 2 INCH LONG	6	
17	S03545	HEX BOLT 5-8 UNC 5 INCH LONG	2	
18	S07004	TPL TOWER	1	
19	S03478	HEX BOLT 3-8 UNC 1 INCH LONG	11	
20	S08250-2	DIA 10 CHAIN LINK ASSY-6 LINKS	76	
21	S03537	HEX BOLT 5-8 UNC 2 INCH LONG	4	
22	S07277	CASTOR ASSY TYPE 2	2	
23	S04011	LYNCH PIN	1	
24	S04067	NYLOC NUT 3-4 UNF	8	
25	S04835	CHAIN LINKS STAY	2	
26	S02324	CLUTCH ASSY 4 PLATE_BARE-CO	1	
27	S07426	DRIVE SHAFT 6 SERIES COMPLETE ASSEMBLY	1	
28	S04628	GEARBOX 90HP	1	
29	S04837	CHUTE COVER	1	
30	S06503	CLUTCH COVER	1	
31	S05260	1410 UNIVERSAL CONNECTOR ASSEMBLY	2	
32	S04824	CUTTING HEAD ASSEMBLY 54 INCH CUT LC270	2	
33	S03539	HEX BOLT 5-8 UNC 2 1-2 LONG_S03539	4	
34	S01033	NYLOC NUT 5-8 UNC S01033	4	
35	S04816	SLASHER ASSEMBLY COMPLETE-TWIN DISCHARGE	1	
36	S04816-1	SLASHER ASSEMBLY COMPLETE-RIGHT HAND DISCHARGE	1	

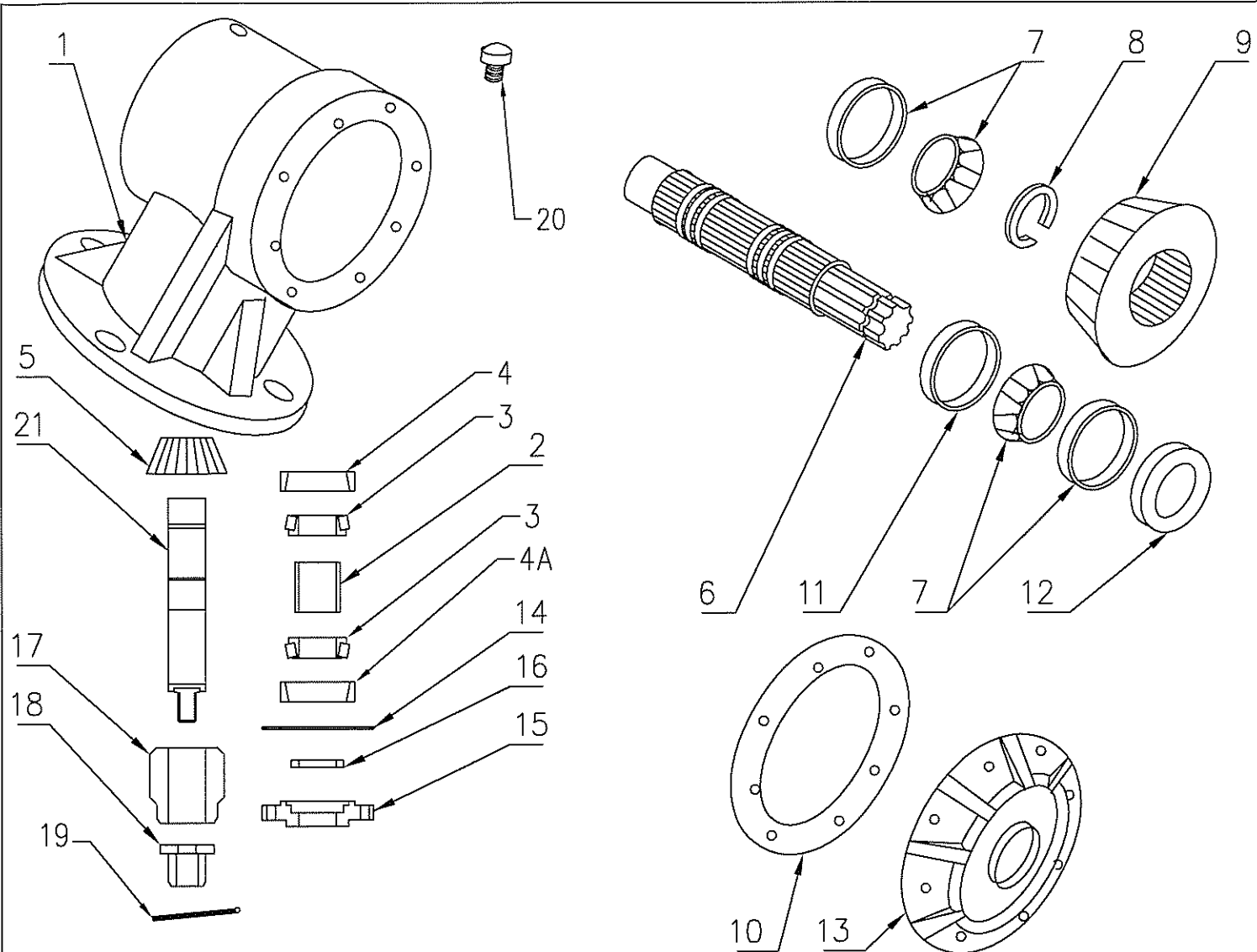
PLEASE NOTE:
 * REFER PAGE 7 TO SEE GEOMETRIC DETAILS OF TWIN DISCHARGE SLASHER ASSEMBLY.
 * REFER PAGE 8 TO SEE THE GEOMETRIC DETAILS OF RIGHT HAND DISCHARGE SLASHER ASSEMBLY

CUTTING HEAD ASSEMBLY COMPLETE SUIT LC270 SLASHER

ITEM NO.	PART NUMBER	PART NAME	QTY OFF											
1	S05067	NYLOC NUT 3/4" UNC	2											
2	S04051	CUTTING HEAD ADAPTOR	1											
3	S03393	HEX BOLT 3/4"UNF x 3 1/2" LONG	2											
4	S04090-1	SELF SHARPEN SUCTION LIFT BLADE LH 75X14INCH X 16MM	2											
5	S05069	BLADE BUSH 16mm	2											
6	S04604	HEAD FLAT WITH SQUARE HOLES 10MMX75MMX33INCH	1											
7	S04597	HEAD FLAT WITH ROUND HOLES 8MMX75MMX33INCH	1											
8	S04060	CUTTING HEAD RETAINER PLATE	1											
9	S02115	DOME HEAD BOLT 3/4"UNC x 2 3/8" LONG	2											
10	S04598	SPACER 75X8X25INCH	11	S04067	NYLOC NUT 3/4" UNF	2	12	S04091-1	SELF SHARPEN SUCTION LIFT BLADE RH 75X14INCH X 16MM	2	13	S04824	CUTTING HEAD ASSEMBLY COMPLETE LC270	2
11	S04067	NYLOC NUT 3/4" UNF	2											
12	S04091-1	SELF SHARPEN SUCTION LIFT BLADE RH 75X14INCH X 16MM	2											
13	S04824	CUTTING HEAD ASSEMBLY COMPLETE LC270	2											

* QTY OF PARTS MENTIONED IN THE TABLE IS FOR A SINGLE CUTTING HEAD ASSEMBLY.
 * LC270 CONSISTS OF TWO CUTTING HEAD ASSEMBLY.
 * PLEASE CONSIDER THE QTY/ ASSEMBLY WHILE ORDERING THE PARTS.



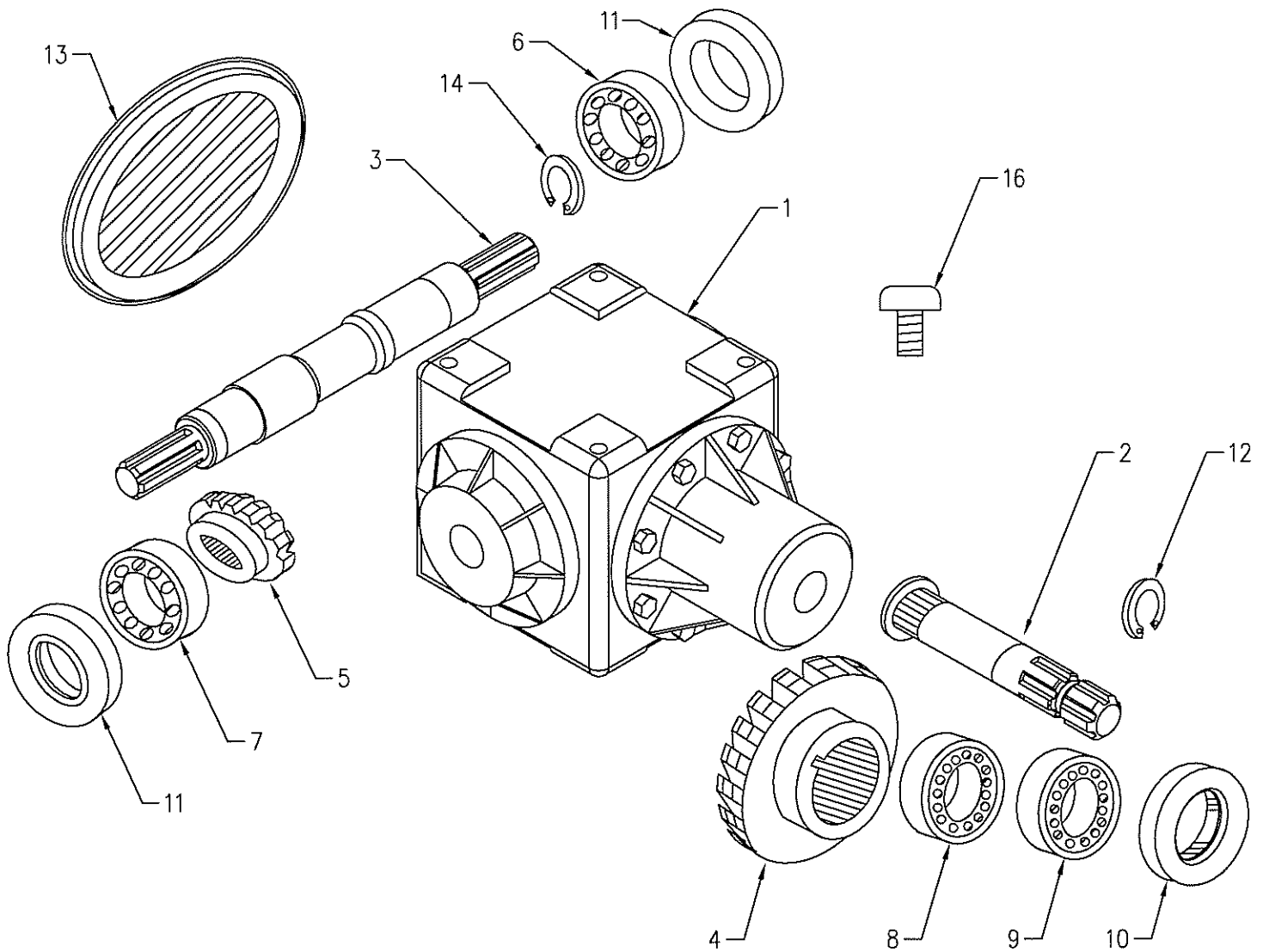


GEAR BOX 75 H.P. 1.46 RATIO_LC270

ITEM No.	PART No.	DESCRIPTION	QTY. OFF
1	S06181	GEARBOX HOUSING	1
2	S06193	SPACER Output	1
3	S06183	Top & bottom OUTPUT BEARING	2
4	S06184-1	Top Cup Suit OUTPUT BEARING	1
4A	S06184	Bottom Cup Suit OUTPUT BEARING	1
5	S06185	PINION Output Ratio 1:46 13Teeth	1
6	S06187	INPUT SHAFT	1
7	S06188	BEARING Input Front & Rear	2
8	S06205	CIRCLIP Input	1
9	S06190	GEAR Input Ratio 1:46 19Teeth	1
10	S06192	SHIM Input	AS REQ.
11	N/A	SPACER Input	1
12	S06194	SEAL Input	1
13	S06195	FRONT PLATE	1
14	S06196	SHIM Output	AS REQ.
15	S06197	SEAL CARRIER	1
16	S06198	SEAL Output	1
17	S06199	BOSS OUTPUT	1
18	S06201	NUT Castelated Output	1
19	S04054	SPLIT PIN	1
20	S06206	FILLER / BREATHER PLUG	1
21	S06182	OUTPUT SHAFT	1
21	S06180-1	GEARBOX COMPLETE (1:46 RATIO)PER MACHINE*	2

* QTY OF PARTS MENTIONED HERE IS OF A SINGLE GEARBOX. THE GEARBOX PER MACHINE IS 2 OFF

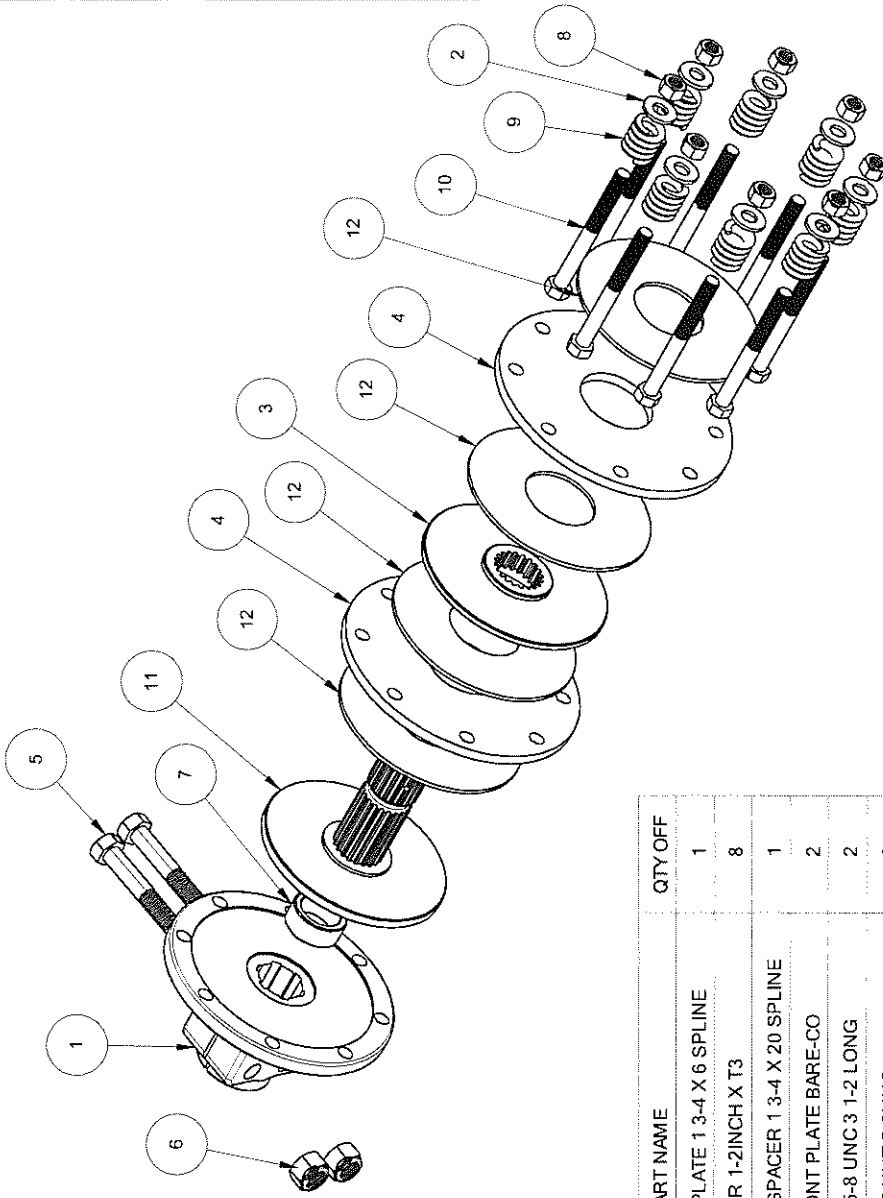
* QTY OF PARTS MENTIONED IN THE TABLE IS FOR A SINGLE GEARBOX ASSEMBLY.
 * LC270 CONSISTS OF TWO 75HP GEAR BOXES.
 * PLEASE CONSIDER QTY/ ASSEMBLY WHILE ORDERING THE PARTS.



GEARBOX BYPY S2100 SERIES_LC270

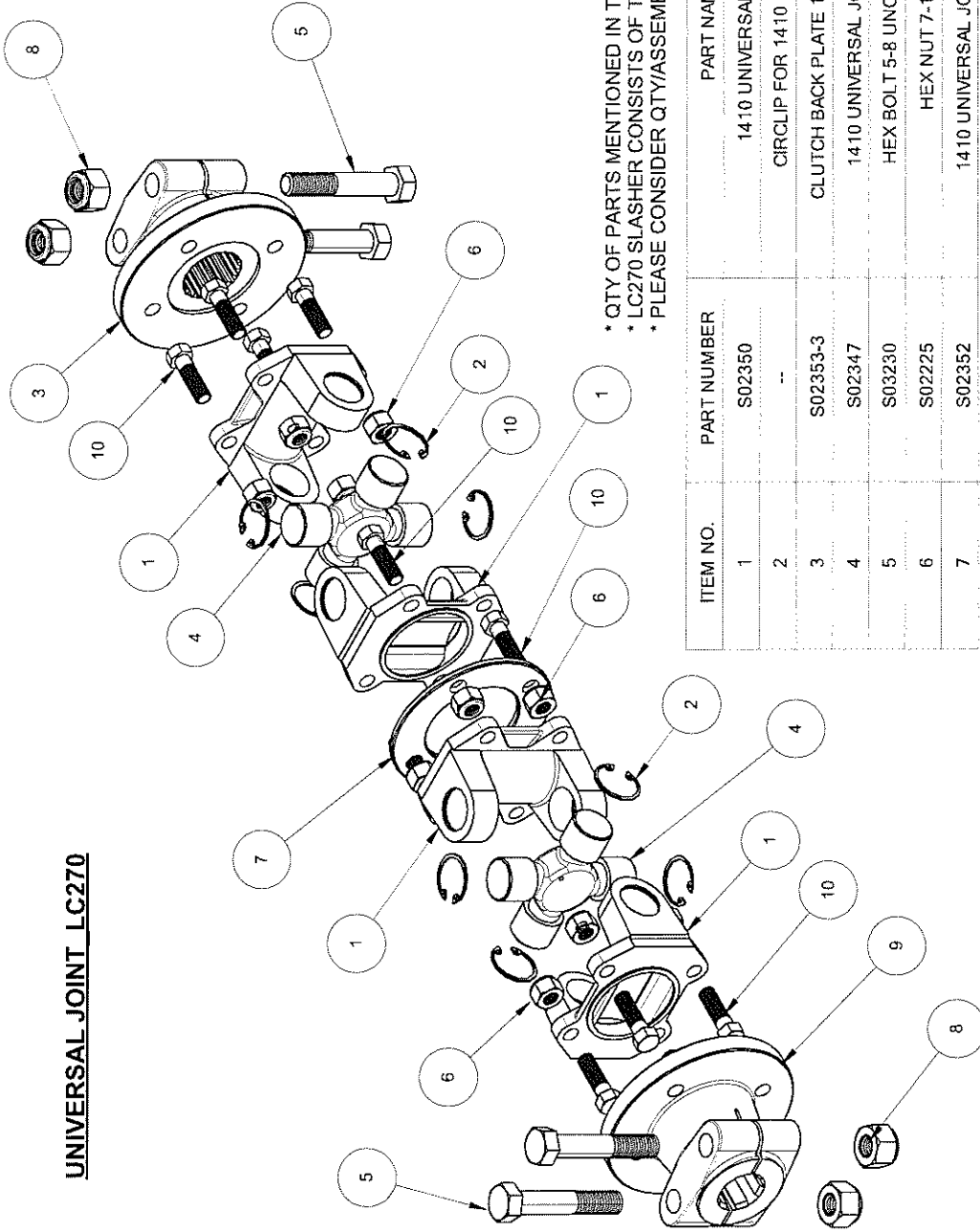
ITEM No	PART No	DESCRIPTION	QTY. OFF
1	S06525	GEARBOX HOUSING	1
2	S06512-1	INPUT SHAFT 1 3/4 x 6 SPLINE	1
3	S06513-1	CROSS SHAFT 1 3/4 x 6 SPLINE	1
4	S06514	GEAR (RATIO 2:1)	1
5	S06515	PINION (RATIO 2:1)	1
6	S06516	BEARING CROSS SHAFT	1
7	S06517	BEARING CROSS SHAFT	1
8	S06518	BEARING INPUT SHAFT	1
9	S06519	BEARING IINPUT SHAFT	1
10	S06520	SEAL INPUT SHAFT	1
11	S06521	SEAL CROSS SHAFT	2
12	S06522	CIRCLIP INPUT SHAFT	1
13	S06523	INSPECTION CAP REAR	1
14	S06524	CIRCLIP FOR CROSS SHAFT	1
15	S06511	GEARBOX COMPLETE (Advise Ratio)	1
16	S06547	BREATHER PLUG	1

CLUTCH ASSEMBLY 4 PLATE LC270



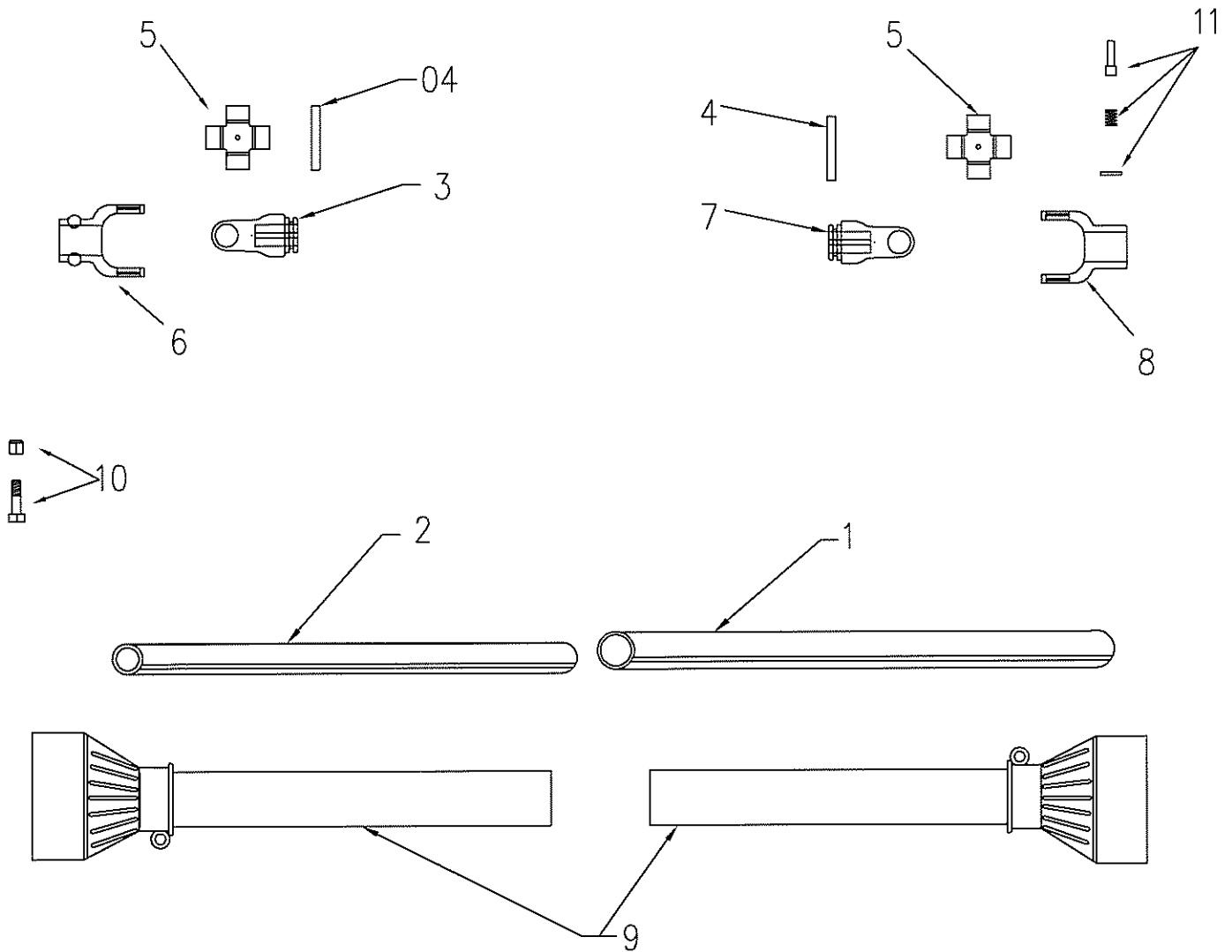
ITEM NO.	PART NO.	PART NAME	QTY	OFF
1	S02390	CLUTCH BACK PLATE 1 3-4 X 6 SPLINE	1	
2	S04224	WASHER 1-2INCH X T3	8	
3	S06401	CLUTCH SLIDING SPACER 1 3-4 X 20 SPLINE	1	
4	S04026-1	CLUTCH FRONT PLATE BARE-CO	2	
5	S03230	HEX BOLT 5-8 UNC 3 1-2 LONG	2	
6	S01033	NYLOC NUT 5-8UNC	2	
7	S04103	BUSH FOR CLUTCH 1 3-4 X 20 4 PLATE	1	
8	S02334	NUT 1-2 INCH WHIT _S02334	8	
9	S04100	CLUTCH SPRING	8	
10	S02334	BOLT 1-2 WHIT X 5 LONG	8	
11	S06400	CLUTCH DRIVE PLATE 1 3-4 X 20 SPLINE	1	
12	S04027	CLUTCH LININGS	4	
13	S02328-2	CLUTCH ASSEMBLY COMPLETE	1	

UNIVERSAL JOINT LC270



* QTY OF PARTS MENTIONED IN THE TABLE IS FOR A SINGLE ASSEMBLY.
 * LC270 SLASHER CONSISTS OF TWO UNIVERSAL ASSEMBLIES.
 * PLEASE CONSIDER QTY/ASSEMBLY WHILE ORDERING THE PARTS.

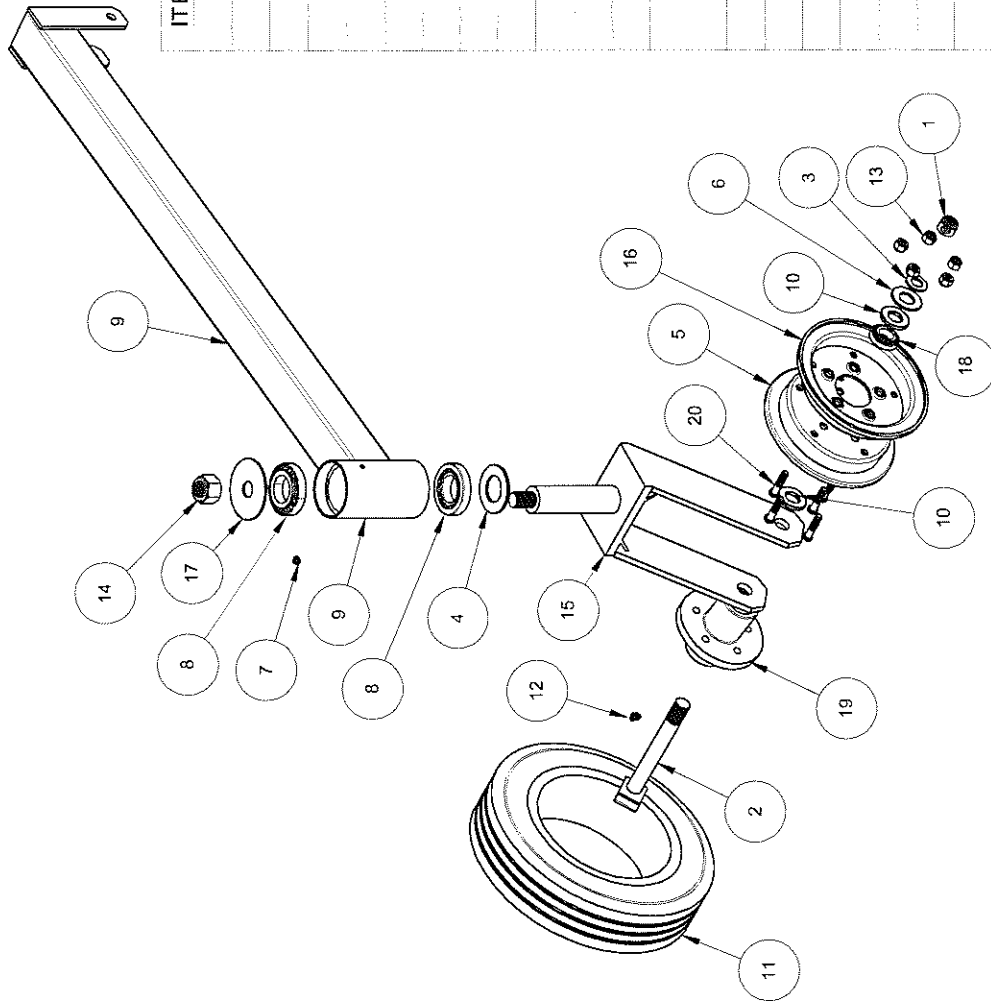
ITEM NO.	PART NUMBER	PART NAME	QTY	OFF
1	S02350	1410 UNIVERSAL FLANGE	4	
2	--	CIRCLIP FOR 1410 UNI FLANGE	8	
3	S02353-3	CLUTCH BACK PLATE 1 3-4 X 6 SPLINE	1	
4	S02347	1410 UNIVERSAL JOINT CROSS	2	
5	S03230	HEX BOLT 5-8 UNC 3 1-2 LONG	4	
6	S02225	HEX NUT 7-16 UNF	12	
7	S02352	1410 UNIVERSAL JOINT SPACER	1	
8	S01033	NYLOC NUT 5-8UNC	4	
9	S02353-1	CLUTCH BACK PLATE 1 3-8 X 6 SPLINE	1	
10	S02342	HEX BOLT 7-16 UNF X 1 1-2 LONG	12	



DRIVESHAFTS A8 SERIES_LC270

ITEM No.	PART No.	DESCRIPTION	QTY. OFF.
1	S07415	DRIVESHAFT B/CO 8 SERIES DRIVE SHAFT OUTER TUBE	1
2	S07416	DRIVESHAFT B/CO 8 SERIES DRIVE SHAFT INNER TUBE	1
3	S07417	DRIVESHAFT B/CO 8 SERIES DRIVE SHAFT TUBE YOKE (INNER)	1
4	S07418	DRIVESHAFT B/CO 8 SERIES DRIVE SHAFT ROLL PIN	2
5	S07419	DRIVESHAFT B/CO 8 SERIES DRIVE SHAFT UNIVERSAL	2
6	S07420	DRIVESHAFT B/CO 8 SERIES DRIVE SHAFT QR YOKE (1 3/8" X 6")	1
7	S07421	DRIVESHAFT B/CO 8 SERIES DRIVE SHAFT TUBE YOKE (OUTER)	1
8	S07422	DRIVESHAFT B/CO 8 SERIES DRIVESHAFT PB YOKE (1 3/4 X 20)	1
9	S07185	DRIVESHAFT BINNACCHI A6, A7 & A8 COVER ASSY. COMPLETE	1
10	S07425	DRIVESHAFT B/CO 8 SERIES DRIVESHAFT NUT AND BOLT	2
11	S07427	DRIVESHAFT B/CO 8 SERIES DRIVESHAFT YOKE PIN, SPRING, WASHER	1
12	S07222	DRIVESHAFT B/CO 8 SERIES DRIVESHAFT COMPLETE (1 3/8" X 1 3/4")	1

CASTOR ASSEMBLY WITH 400X8 WHEELS_LC270



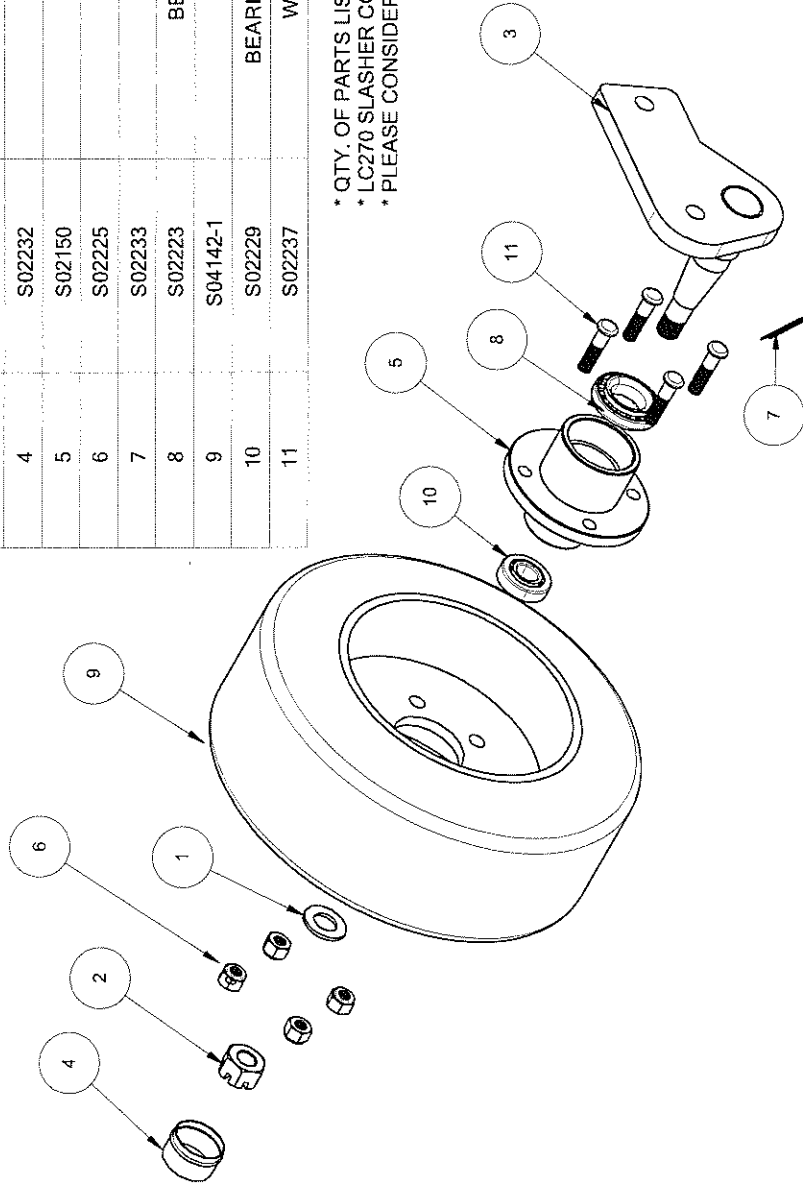
ITEM NO.	PART NO.	PART NAME	QTY. OF 1
1	S05067	NYLOC NUT 3/4 UNC	1
2	S04082	WHEEL AXLE 1 INCH DIA X 8 INCH LONG	1
3	S04226	WASHER 3/4 INCH	1
4	S04238	WASHER 1 3/4 INCH	1
5	S05078	SPLIT RIM PLAIN 400X8_5 STUD	1
6	S04227	FLAT LIGHT WASHER 1 INCH	1
7	S04085	GREASE NIPPLE STRAIGHT 1/8 BSP	1
8	S04646	TAPERED ROLLER BEARING	2
9	S02379	CASTOR BEAM TYPE 2_3X3X49 INCH	1
10	S04078	WHEEL SPACER 1 INCH X 1/4 THICK	2
11	S07255	SOLID TYRE ITALIAN_400X8	1
12	S04120	GREASE NIPPLE 45 DEG 1/8 BSP	1
13	S02225	HEX NUT 7/16 UNF	5
14	S01038	NYLOC NUT 1 UNF	1
15	S04092-2	FORK DOUBLE LEG 400 X 8 1 3/4 SHAFT	1
16	S05079	SPLIT RIM EMBOSSED 400X8_5 STUD	1
17	S04234	FLAT LIGHT WASHER ID 1 INCH	1
18	S04084	TAPERED ROLLER BEARING	2
19	S05080	HUB 5 STUD SUPERIOR	1
20	S02237	WHEEL HUB STUD_7/16 UNF 1 1/2 LONG	5
21	S06617	CASTOR ASSEMBLY COMPLETE	2

* QTY. OF PARTS LISTED IN THE TABLE ABOVE IS FOR SINGLE CASTOR ASSEMBLY.
 * LC270 SLASHER CONSISTS OF TWO CASTOR ASSEMBLIES.
 * PLEASE CONSIDER QTY/ ASSEMBLY WHILE ORDERING THE PARTS.

FRONT WHEEL ASSEMBLY LC270

ITEM NO.	PART NO.	PART NAME	QTY. OFF
1	S04226	WASHER 3/4"	1
2	S02231	HEX SLTD NUT 3/4"	1
3	S06627-2	STUB AXLE BRACKET RH FOR LCL MODELS	1
4	S02232	DUST CAP	1
5	S02150	WHEEL HUB	1
6	S02225	HEX NUT 7/16" UNF	4
7	S02233	SPLIT PIN	1
8	S02223	BEARING TAPERED BEARING	1
9	S04142-1	RUBBER TYRE	1
10	S02229	BEARING TAPERED ROLLER BEARING	1
11	S02237	WHEEL HUB STUD_7/16" UNF	4

* QTY. OF PARTS LISTED IN THE TABLE IS FOR A SINGLE ASSEMBLY
 * LC270 SLASHER CONSISTS OF TWO FRONT WHEEL ASSEMBLIES.
 * PLEASE CONSIDER QTY / ASSEMBLY WHILE ORDERING THE PARTS.



LC270 SLASHER

WARRANTY

Your Superior Product is covered by **Manufacturers Warranty of 180 days** against faulty parts and or workmanship. Warranty does not cover operator abuse, or damage to the cutting head assembly (head flats, blades etc.) Should a warranty type problem develop with your new Mower **contact your local dealer** who will refer the problem to SUPERIOR EQUIPMENT. Items for any warranty inspection must be **forwarded on a pre-paid basis. Goods supplied are on a charge basis, subject to warranty inspection.**

(See page 1 for Corporate Philosophy / Warranty / Liability)

OWNERS NOTES

Model:	Serial No.
---------------	-------------------

LUBRICATION DATES

SPARE PARTS REFERENCES