



**INSTRUCTION AND PARTS MANUAL  
FOR  
LXCT5 / LXCT6 /  
LXCT7 / LXCT8  
CLEAN DECK SLASHER**



**INSTRUCTION AND PARTS MANUAL**  
**FOR**  
**LXCT5/ LXCT6/**  
**LXCT7/ LXCT8**  
**CLEAN DECK SLASHER**

# INDEX

	<b>PAGE</b>
• <b>CORPORATE PHILOSOPHY</b>	<b>1</b>
• <b>OPERATIONAL SAFETY INSTRUCTIONS</b>	<b>2</b>
• <b>HAZARDS &amp; SAFETY GUIDE</b>	<b>3 - 4</b>
• <b>OPERATING, CARE &amp; MAINTENANCE</b>	<b>5 - 6</b>
• <b>MAINTENANCE SCHEDULE</b>	<b>7</b>
• <b>BODY COMPONENTS ASSEMBLY</b>	<b>8- 8A</b>
• <b>T.P.L TOWER &amp; CHAINS</b>	<b>9</b>
• <b>HEAVY DUTY GEAR BOX ASSEMBLY</b>	<b>10</b>
• <b>CLUTCH ASSEMBLY</b>	<b>11</b>
• <b>DRIVESHAFT ASSEMBLY</b>	<b>12</b>
• <b>CUTTING HEAD ASSEMBLY – LXCT5 / LXCT6 / LXCT7</b>	<b>13-13A</b>
• <b>CUTTING HEAD ASSEMBLY – LXCT8</b>	<b>14-14A</b>
• <b>4 STUD WHEEL ASSEMBLY</b>	<b>15</b>
• <b>5 STUD WHEEL ASSEMBLY</b>	<b>16</b>
• <b>OPTIONAL WHEEL ASSEMBLY</b>	<b>17</b>
• <b>OWNERS NOTES / WARRANTY CARD</b>	<b>18</b>

## CORPORATE PHILOSOPHY

Since the company's formation in 1973 it has been our goal to manufacture and market the most advanced grass cutting equipment available in Australia and the South Pacific.

Superior adopt World's Best Practice in the Design, Manufacture and Development of tractor-powered Slashers and Commercial Mowers to ensure that all 'Superior' products exceed our customer's expectations with respect to in-field performance, reliability and value for money.

Superior also adopts a policy of continuous improvement to all models and we reserve the right to make modifications to our equipment without notification.

## PRICING, DELIVERY & OWNERSHIP

Price: Prices quoted in this price list are Recommended Retail Prices with GST & without GST (Note column Headings). Superior reserve the right to modify these prices without notice. Discounts are available to Dealers and Agents for quantity buys and early payment.

Delivery: Prices quoted are ex-Factory (Brisbane, Australia) unless otherwise specified. Any additional packaging costs and freight will be directed to the purchaser's account. Please note: - Equipment and/or parts dispatched are not covered by our insurance, and owners/agents are to arrange their own insurance to protect themselves for any loss or damage whilst in transit, or for any potential claims from third parties for personal injury or property liability. Weights and HP are supplied as a guide only.

Ownership: Ownership of supplied parts and equipment will not pass to the purchaser until such time as the articles are paid for in full to Superior Equipment Australia Pty Ltd. ABN 50 854 422 162.

## INSTRUCTION MANUAL & SPARE PARTS LIST

Instruction Manual: Superior supplies to purchasers of new Superior Equipment an 'Instruction Manual & Spare Parts List'. The manual supplied is the most current available & subject to change with component updates or improvements. Owners, operators & service personnel must read, comprehend & follow all instructions in the manual as to the safe use & maintenance of the equipment. Superior advises that their manual is a guide only & users of the equipment have a 'duty of care' to perform their own risk assessment.

## WARRANTY CONDITIONS

Superior guarantees all new equipment (manufactured by Superior) against faulty parts and or workmanship for a period of Six (6) Months or 180 days from date of purchase. Any variation to this figure will be provided in writing. The use of non-original or non-Superior approved parts during the warranty period may invalidate this warranty.

During this warranty period Superior agrees to replace pro-rata, the parts proved faulty by our evaluation team. Any Labour Costs associated with the repair/replacement will also be covered by Superior. Please Note:- PTO Shafts, Bearings, and Vee Belts are excluded and are to be covered by the original equipment manufacturer's guarantee. Any part used for cutting or digging (blades, blade carriers, auger teeth or pilots) will be subject to testing and evaluation to determine any claim justifications. Superior have their own Warranty Claim Form that is to be completed in full before any action is taken.

Warranty does not apply if the equipment has been subject to Abuse, Neglect, Lack of Maintenance, Accident, Modification, Undue Wear and Tear, or used in a manner contrary to our standard operating instructions or normal commercial practices. All new Superior Equipment is supplied with a Warranty Registration Form. This form is to be returned to Superior within 14 days of installation (i.e. Sale and receipt by customer) for warranty to take effect. Modification of Superior Equipment within the warranty period voids all warranty relevant to the modification.

Any equipment or part thereof which is subject to a warranty claim must be shipped by prepaid freight or delivered to Superior Equipment in Brisbane for evaluation. Alternatively, the item/s may be delivered by prepaid freight to an Approved Superior Service Center for evaluation. Superior will not pay for any service or repair work carried out without prior, written approval. Note:- Superior's Labour Rate for External Repairs will apply to all work authorized under this Warranty.

## LIABILITY & LEGAL ISSUES

Liability: Superior declines any responsibility for any loss or damage (of any description), caused by any breakdown of the equipment (or part thereof), by delayed delivery, or by the actual use of the equipment. Superior declines to be party to any actions, suits, or claims arising from the improper or unsafe use of the equipment and recommends that all operators and service personnel be experienced and have a sound understanding of all Workplace, Health and Safety issues relevant to the machinery involved. Failure to take appropriate care when operating machinery may result in injury. Operators and or service personnel are not to remove any safety guards and are to satisfy themselves, their employers and the public that they are not only competent but have taken all necessary precautions to protect themselves and their employers, the suppliers of the equipment, and the manufacturers of the equipment, from any injury actions, suits or claims. Operators and or service personnel are to perform their own risk assessment when loading or unloading, installing or removing, starting or stopping & in the actual use or maintenance of the equipment.

Legal: In the event of any legal dispute, Superior will only consider a Court of Law in Brisbane, Australia for the hearing of any such dispute, claim or litigation.

- 
- 
- 
- 

## • SUPERIOR EQUIPMENT Australia Pty Ltd

□ Multi Head Mowers, Slashers, Vineyard Mowers, Pasture Toppers, Post Hole Diggers, Grader Blades, Cotton Shredders, Flail Mowers, Aerators and associated Equipment.

### □ **Operational Safety Instructions**

- Before operating any Equipment it is your duty to read all **Safety Labels and Warning Decals and Operating Manuals** and fully comprehend their meaning.
- **Safety Labels and Warning Decals** are there to make people aware that Safety is in the Hands of the Operator whilst operating Equipment of this nature.

### □ **WARNING!!**

### □ **KEEP CLEAR!!**

### □ **OPEN DISCHARGE AREA**

- **DO NOT Operate while people or stock are at risk in the discharge area.**
- **DO NOT stand on the Equipment while PTO is engaged or Equipment is Operational.**
- **DO NOT approach rear of Equipment while PTO is Engaged or Equipment is Operational.**
- **DO NOT Operate in conditions where stones, sticks or solid objects may be discharged from the Equipment.**

- 
- 
- 
- 
-

<p align="center"><b>POSSIBLE HAZARDS OPERATORS ARE TO BE AWARE</b></p>	<p align="center"><b>OPERATORS MUST FOLLOW THESE SAFETY GUIDE LINES</b></p>
<p align="center"><b>Projectiles striking bystanders, etc...</b></p>	<p><b>Guards enclosing cutting area of equipment / unit to be properly adjusted to prevent material from being ejected.</b></p> <ul style="list-style-type: none"> <li>• Mowing / Slashing to stop if persons or vehicles are passing close-by the equipment.</li> <li>• Mowing / Slashing to stop if persons or vehicle are passing by and the ground has rocks and debris which could become a projectile.</li> <li>• Mowing / Slashing should be conducted at a height that dos not allow material to be ejected from the unit.</li> <li>• The operator to inspect the area to be mowed and remove debris that could be thrown or could damage the equipment.</li> </ul>
<p align="center"><b>Parts of broken blade striking bystanders etc...</b></p>	<p><b>Maintaining the equipment in good condition. Daily inspections by operator before Mowing / Slashing commences.</b></p> <ul style="list-style-type: none"> <li>• If any vibration or unusual effects are felt, Mowing /Slashing to stop immediately and inspect unit with power switched off.</li> </ul>
<p align="center"><b>Operator struck by projectiles</b></p>	<p><b>Operator not to approach unit while it is operating.</b></p> <ul style="list-style-type: none"> <li>• Operator must always stop the Slasher / Mower prior to getting off.</li> </ul>
<p align="center"><b>Operator struck by rotating blades</b></p>	<p><b>Operator not to approach unit while it is operating.</b></p> <ul style="list-style-type: none"> <li>• Operator must always stop the Slasher /Mower prior to getting off.</li> <li>• Guard on the sides of unit to be adjusted as low as possible when fitted.</li> <li>• To perform any adjustments the Tractor unit must be made inoperable with the unit turned off, key removed, spark plug leads removed, etc.. and PTO disengaged.</li> <li>• Operator to wear Type.1 safety footwear.</li> </ul>
<p align="center"><b>Operator entangled with PTO</b></p>	<p><b>Operator not to approach unit or make any adjustments while it is operating</b></p> <ul style="list-style-type: none"> <li>• Operator must stop the prior to getting off.</li> <li>• <b>Power Take Off is guarded.</b> The equipment must <b>NOT</b> be operated with PTO guard removed.</li> <li>• Operator not to stand on unit while PTO engaged.</li> </ul>

<p align="center"><b><i>POSSIBLE HAZARDS OPERATORS ARE TO BE AWARE</i></b></p>	<p align="center"><b><i>OPERATORS MUST FOLLOW THESE SAFETY GUIDE LINES</i></b></p>
<p align="center"><b>Operator entangled with power input coupling.</b></p>	<p><b>Operator not to approach unit while it is operating.</b></p> <ul style="list-style-type: none"> <li>• Operator must always stop the Slasher prior to getting off.</li> <li>• Power Take Off coupling is guarded. The unit must NOT be operated with PTO or coupling guard removed.</li> </ul>
<p align="center"><b>Operator entangled in drive belt.</b></p>	<p><b>The unit is <i>NOT</i> to be operated with cover plates removed.</b></p> <ul style="list-style-type: none"> <li>• Operator must always stop the unit prior to getting off.</li> </ul>
<p align="center"><b>Operator entangled in blades clearing blockage.</b></p>	<p><b>Operator not to raise or approach unit while it is operating.</b></p> <ul style="list-style-type: none"> <li>• Operator must always stop the Slasher /Mower prior to getting off.</li> <li>• The Tractor unit must be made inoperable with the unit turned off, key removed from ignition, spark plug leads removed, etc...and PTO disengaged.</li> </ul>
<p align="center"><b>Operator struck by falling Slasher / Mower unit while clearing blockage.</b></p>	<ul style="list-style-type: none"> <li>• <b>All of the above clearing blockage, plus:</b></li> <li>• <b>The Slasher /Mower to be propped up to prevent it from falling down.</b></li> </ul>
<p align="center"><b>Operator trapped under Slasher / Mower unit if tractor moves while clearing blockage.</b></p>	<ul style="list-style-type: none"> <li>• <b>All of the above clearing blockage, plus:</b></li> <li>• <b>The tractor must be turned off, parked on level ground, in first gear with the hand brake applied.</b></li> </ul>
<p align="center"><b>Operator injured changing blades.</b></p>	<ul style="list-style-type: none"> <li>• <b>The blades to changed by qualified person with genuine replacement parts in a safe manner.</b></li> <li>• <b>Blades not to be changed in field.</b></li> </ul>

# **OPERATING INSTRUCTIONS FOR** **LXCT5 / LXCT6 / LXCT7 / LXCT8 CLEAN – SUPERIOR SLASHERS**

## **Getting the best of your Superior**

### **LINKAGE SLASHERS**

#### **SETTING UP:-**

##### **INITIAL START UP**

**Check Gearboxes for oil: Recommended OIL** : - 85w -- 140 EP GEAR OIL

**Grease all grease points: Recommended Grease** : - All Purpose Grease EPL 2

*See Maintenance Schedule Attached*

##### **ATTACHING TRACTOR**

Connect tractor to T.P.L. lower link pins, the Slasher is fitted with a stepped pin which will fit either cat 1, 22 mm ( 7/8" ) or cat 2, 30 mm ( 1 1/8" ). Make sure tractor is fitted to correct size and place lynch pin in hole end of pin.

Tighten Anti-Sway Bars / Chains (must be firm, not rigid)

Connect Top Link to Tower.

Connect Driveshaft to P.T.O. on Tractor and Clutch / Gearbox on Slasher; make sure Clamp Bolts and or Q.R. Pins are located in respective grooves. (Failure to do this will result in Driveshaft Damage).

Tractor Lift Arms can vary in length.

##### **CHECK OPERATIONAL LENGTH OF DRIVESHAFT BEFORE OPERATING SLASHER.**

Check length of Driveshaft at the highest and lowest positions of Tractor Lift arms.

The Driveshaft requires Sliding Movement of approx. 100 mm (4") to avoid bottoming at minimum or pulling apart at maximum operational lengths.

##### **Caution Entering & Exiting Steep Gully's or Steep Ridges may result in Drive Shaft Bottoming out or Coming Apart, Check Drive Shaft Length before using Slasher in Extreme Conditions.**

##### **SETTING UP SLASHER**

Your Superior Slasher will cut cleanest and requires less H.P. to drive when the front of the Slasher is set lower than the rear.

Your Superior Slasher is fitted with stepped blades as standard; these will require approx. 12 mm (1/2") to 20mm (3/4") lower setting at the front than the rear.

If fitting of Self Sharpening Suction Lift Blades is desired, the slasher should be set with approx 16mm (1/2") to 25mm (1") lower setting at the front than the rear. Operate at these settings, check results, plus adjust for local conditions

##### **MULCHING**

Your Superior Slasher will mulch better if fitted with suction lift blades.

Set the Slasher level (same height front and rear).

For best results detachable mulching plates are available as an optional extra, these are fitted to the rear of the slasher and retain the cut material until full mulch is obtained.

##### **SETTING UP SLASHER WITH REAR CASTOR WHEELS**

Use the rear wheel adjustment to set the correct stance of the Slasher to suit blades that are fitted see (SETTING UP SLASHER) and to set the slasher at the desired cutting height.

Adjust the Top Link to allow the Slasher to hinge at the tractor lower lift arms, so that the Slasher can follow reasonable ground contours. If top link is too short the Slasher will tend to lift off the ground resulting in an uneven cut.



**CAUTION : If top link is too long it may allow the Slasher to lift too high at the front which will cause damage to DRIVESHAFT safety covers or will result in bending DRIVESHAFT, requiring costly repairs.**

### **OPERATION**

Your Superior Slasher will be set up in the factory to suit your tractor's particular P.T.O. either 540 rpm or 1000 rpm.

For best mowing results maintain correct P.T.O. speeds.

In heavy going or awkward areas change back a gear or reduce forward speeds rather than reduce P.T.O. speed by throttling back.

### **CLUTCH SETTINGS**

Clutch settings are best set up in conditions that the Slasher is operating in.

- 1) Operate the Slasher in reasonably heavy conditions for approx. 20 to 30 minutes.
- 2) Disengage P.T.O., Switch Engine Off, Remove Key from Ignition.
- 3) Check temperature of clutch by placing hand on clutch, if clutch is warm to the touch it is about right, if it is hot to the touch the clutch has been slipping excessively and adjustment is necessary.

### **CLUTCH ADJUSTMENT**

1) Undo lock nuts and tighten (increase spring tension) or loosen (decrease spring tension) each adjusting nut ½ to 1 turn.

2) Make sure each of the nuts is adjusted in turn.

**3) DO UP LOCK NUTS**

**4) REFER BACK TO (1) CLUTCH SETTINGS**

***CAUTION*** If clutch is too tight (cold) and there is no opportunity for clutch slip, costly damage to components may result.

### **GENERAL MAINTENANCE**

It is important that after approx. 30 to 60 minutes operation you should stop the Slasher and check all bolts and nuts for tightness. While all bolts are tightened on assembly, impact and working loads cause bedding in of components and early attention to all bolt and nuts will ensure trouble free operation of your Slasher.

Particular attention should be paid to clamp bolt, clutch bolts, cutting head bolts, blade bolts and nuts, as well as wheel nuts, bearings and castor assembly components.

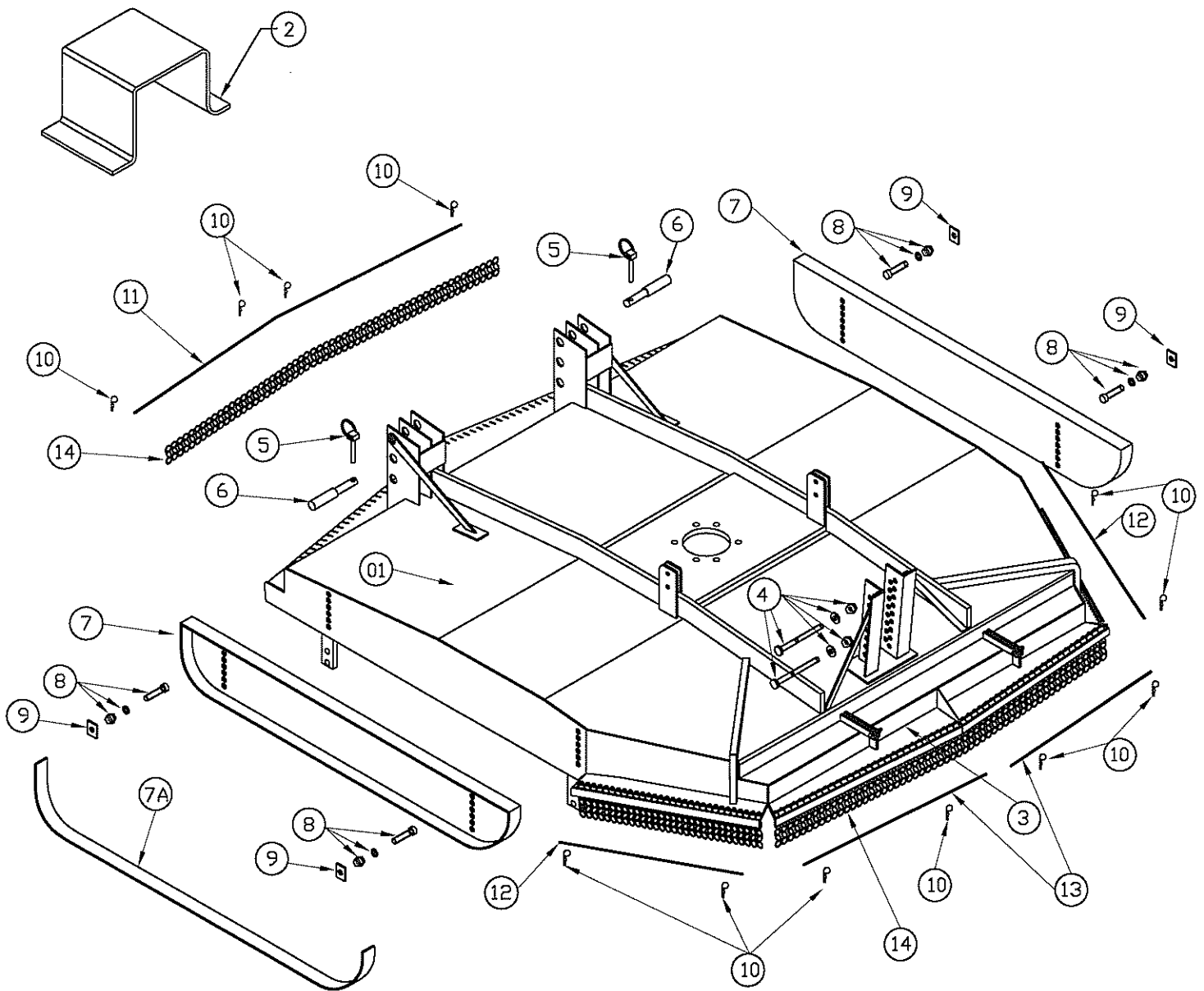
Early inspection of components after initial start up, and adherence to the lubrication recommendations, will greatly assist in maintaining the durability of your investment.

### **READ MAINTENANCE SCHEDULE FOR CORRECT LUBRICATION INTERVALS**

### **WARRANTY**

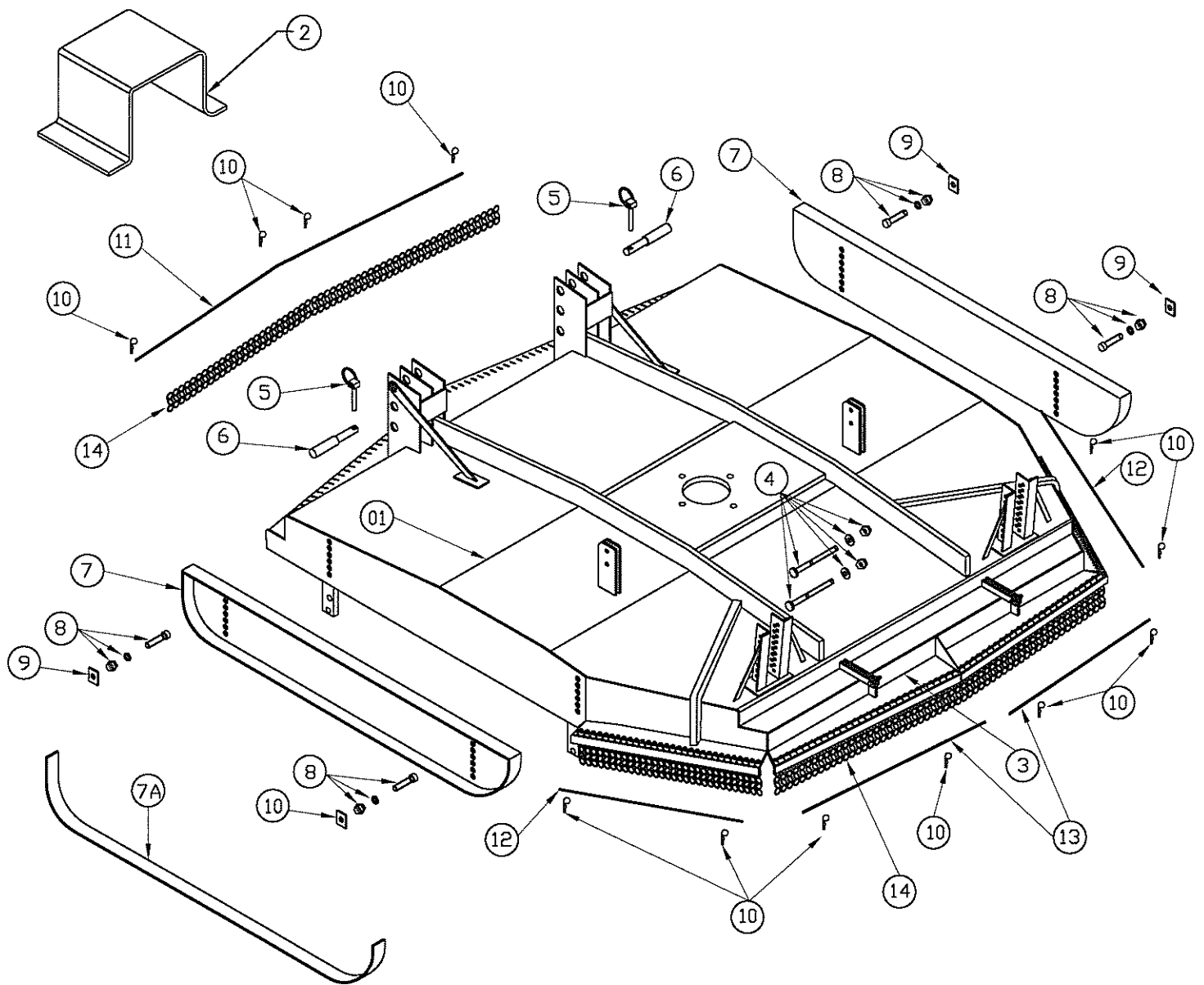
Your Superior Product is covered by **Manufacturers Warranty of 180 days** against faulty parts and or workmanship. Warranty does not cover operator abuse, or damage to the cutting head assembly ( head flats, blades etc. ) Should a warranty type problem develop with your new Slasher **contact your local dealer** who will refer the problem to SUPERIOR EQUIPMENT. Items for any warranty inspection must be **forwarded on a pre-paid basis. Goods supplied are on a charge basis, subject to warranty inspection.**





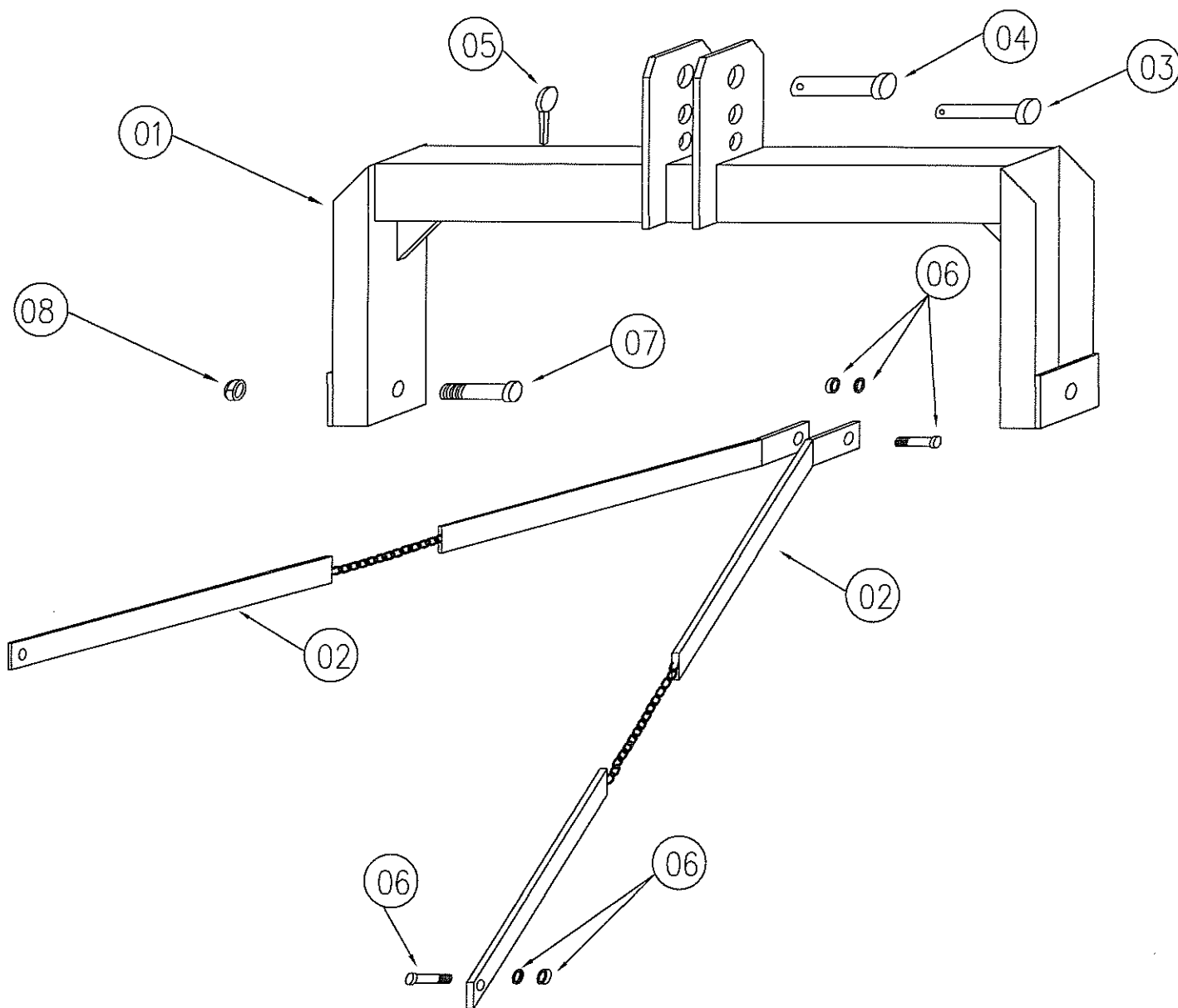
**BODY COMPONENTS - LXCT5 / LXCT6 CLEAN SKIN**

ITEM NO.	PART NO. LXCT5	PART NO. LXCT6	DESCRIPTION	NO. OFF
1	S08185	S07237	MAIN BODY FRAME	1
1	G00118	G00029	GALVANISED BODY FRAME (OPTIONAL)	1
2	S08199	S08199	CLUTCH COVER	1
3	S08186	S07331	HINGED FLAP	1
4	S03544	S03544	BOLT, NUT & WASHER	2 SETS
5	S04011	S04011	LYNCH PIN	2
6	S07008	S07008	T.P.L PIN	2
7	S08135	S07332	ADJUSTABLE SKID (SKID RUNNER INC.)	1 PAIR
7A	S08135-1	S07332-1	SKID RUNNER FOR ADJUSTABLE SKID(SPARE PART ONLY)	1 PAIR
8	S03539	S03539	BOLT, NUT & SPRING WASHER	4 SETS
9	S04855	S04855	TAB SUITS SKID BOLT	4
10	S02219	S02219	PIN SUIT LOCK BAR	12
11	S07333	S07333	CHAIN LOCKBAR TYPE -1	1
12	S07334	S07334	CHAIN LOCK BAR TYPE -2	2
13	S07335	S07335	CHAIN LOCK BAR TYPE -3	2
14	S02642	S02642	CHAIN LINKS	5 SIDES
15	C05003	C06002	FRONT CHAIN KIT (ITEMS 10, 11, 14)	1
16	C05003-1	C06002-1	REAR CHAIN KIT (ITEMS 10, 12, 13, 14)	1



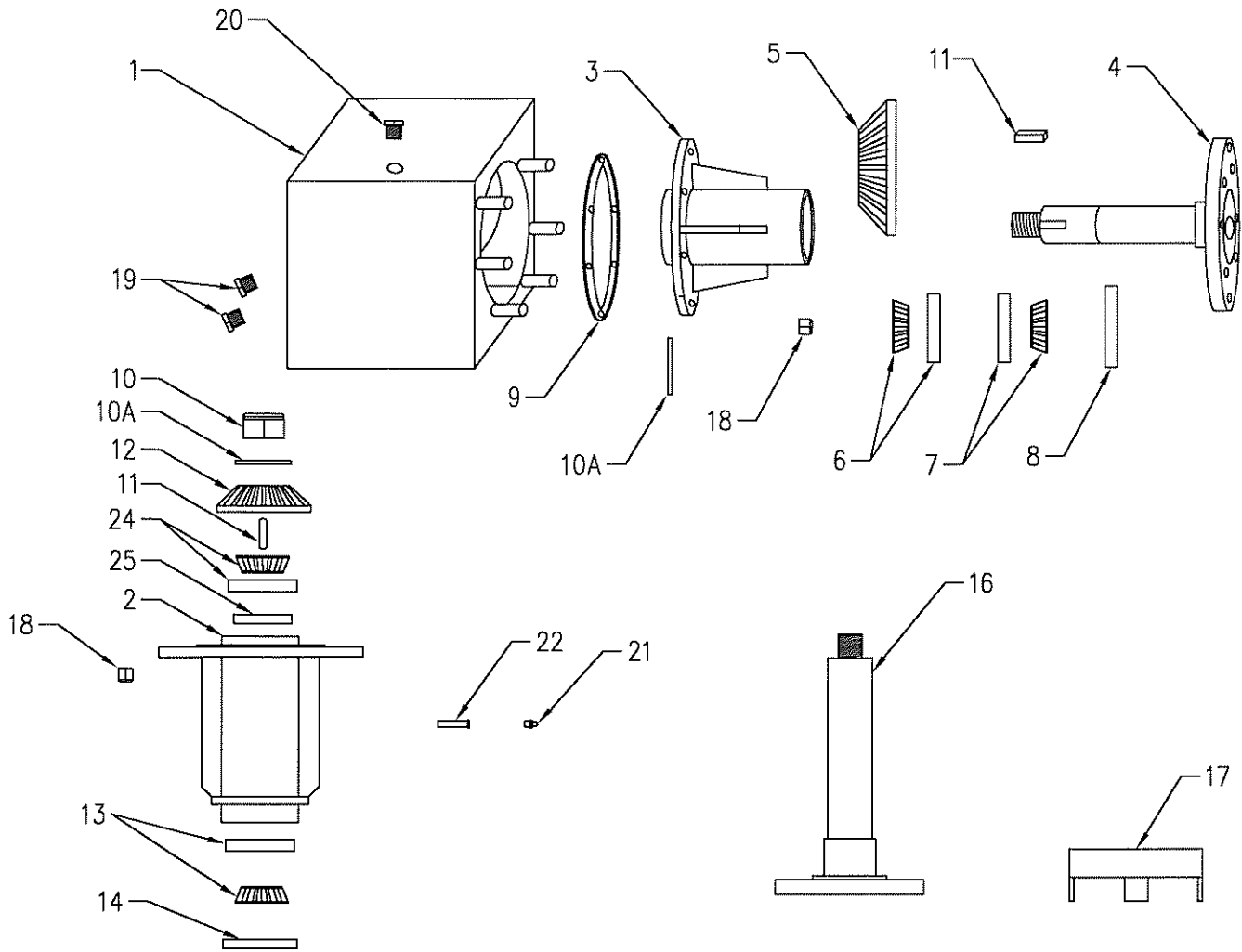
**BODY COMPONENTS - LXCT7 / LXCT8 CLEAN SKIN**

ITEM NO.	PART NO. LXCT7	PART NO. LXCT8	DESCRIPTION	NO. OFF
1	S07239	S07337	MAIN BODY FRAME	1
1	G00046	G00051	MAIN BODY FRAME GALVANISED (OPTIONAL)	1
2	S08199	S08199	CLUTCH COVER	1
3	S07331	S07338	HINGED FLAP	1
4	S03544	S03544	BOLT, NUT & WASHER	2 SETS
5	S04011	S04011	LYNCH PIN	2
6	S07008	S07008	T.P.L PIN	2
7	S08235	S07339	ADJUSTABLE SKID (SKID RUNNER INC.)	1 PAIR
7A	S08236	S07339-1	SKID RUNNER (AS SPARE PART ONLY)	1 PAIR
8	S03539	S03539	BOLT, NUT & SPRING WASHER	4 SETS
9	S04855	S04855	TAB SUITS SKID BOLT	4
10	S02219	S02219	PIN SUIT LOCK BAR	12
11	S07333	S07333	CHAIN LOCKBAR TYPE -1	1
12	S07334	S07334	CHAIN LOCK BAR TYPE -2	2
13	S07335	S07335	CHAIN LOCK BAR TYPE -3	2
14	S02642	S02642	CHAIN LINKS	5 SIDES
15	C07002	C08001	CHAIN KIT FRONT (ITEMS 10,11,14)	1
16	C07002-1	S08001-1	CHAIN KIT REAR (ITEMS 10,12,13,14)	1



**T.P.L TOWER & CHAINS - LXCT5 / LXCT6 / LXCT7 / LXCT8 CLEAN SKIN**

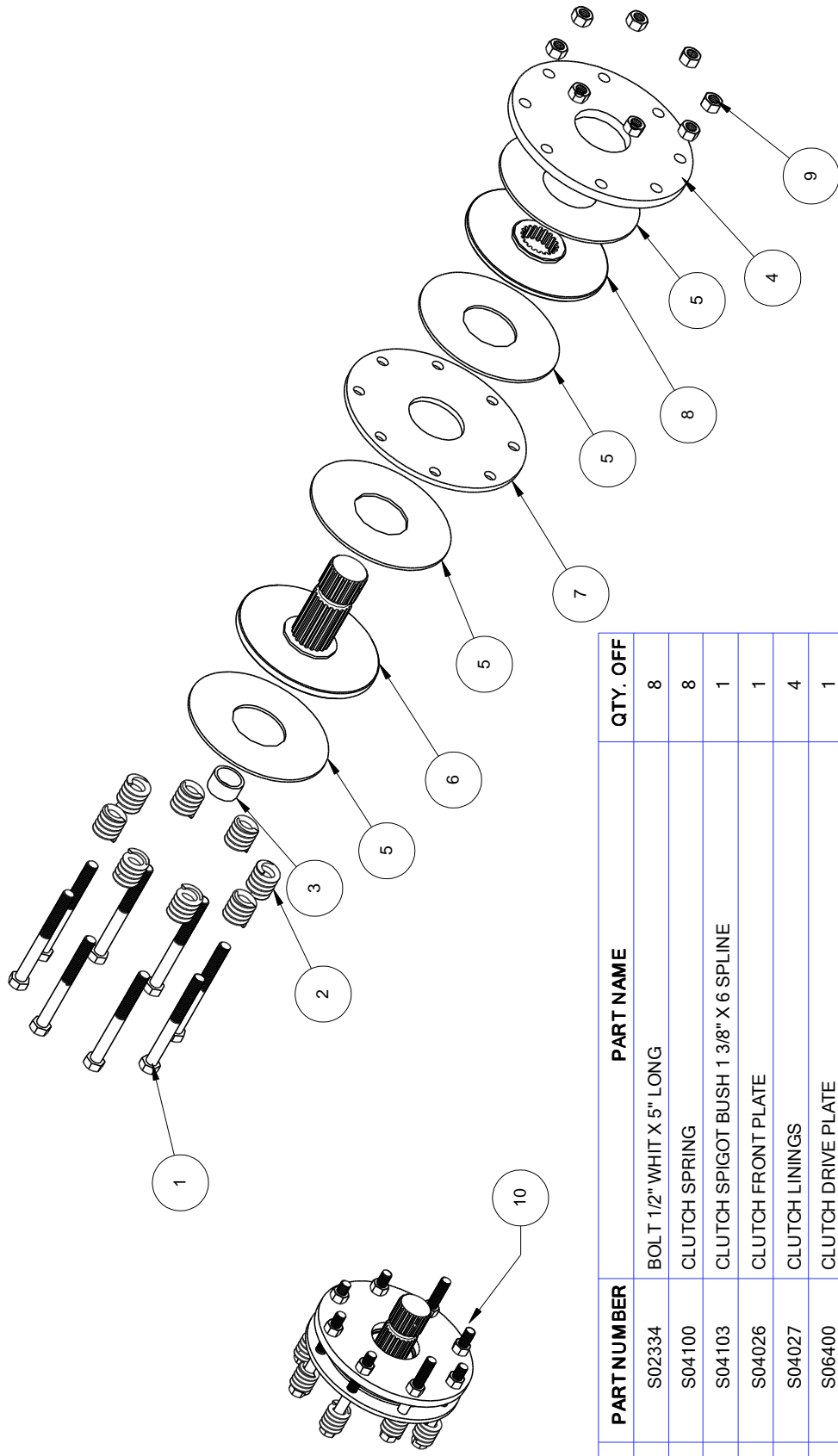
ITEM NO.	PART# LXCT5	PART# LXCT6	PART# LXCT7	PART# LXCT8	DESCRIPTION	NO. OFF
1	S7004	S7004	S7004	S7004	TOWER	1
2	S07257	S07258	S07259	S07261	TOWER CHAINS	2
3	S4132	S4132	S4132	S4132	TOP PIN CAT 2	1
4	S4133	S4133	S4133	S4133	TOP PIN CAT 1	1
5	S4011	S4011	S4011	S4011	LYNCH PIN	1
6	S3536	S3536	S3536	S3536	TOWER CHAIN BOLT, NUT & S/WASHER 5/8	4
7	S3558	S3558	S3558	S3558	TOWER HINGE BOLT	2
8	S5067	S5067	S5067	S5067	NYLOC NUT	2



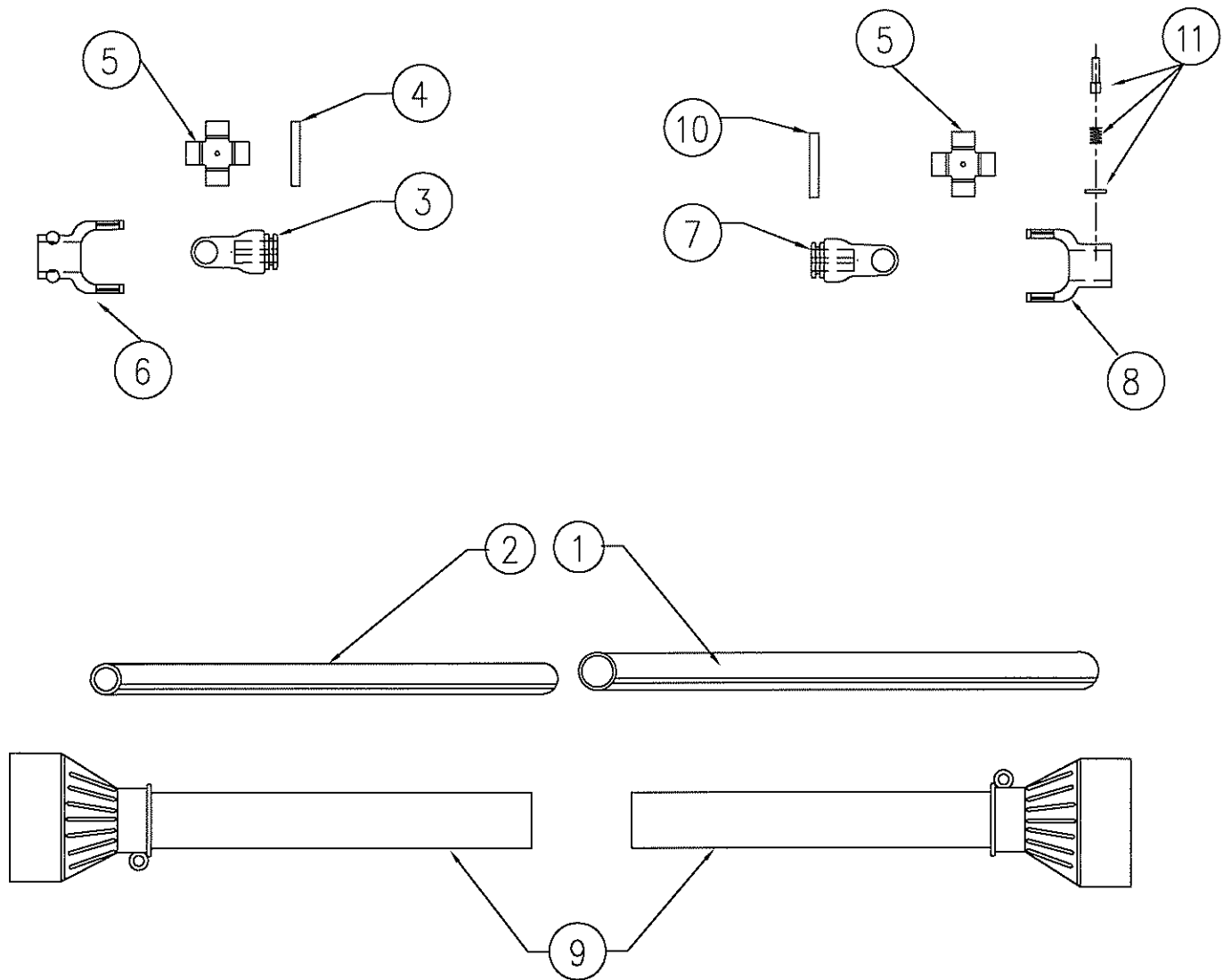
### HEAVY DUTY GEARBOX LXCT5 / LXCT6 / LXCT7 / LXCT8 CLEAN SKIN

ITEM No.	PART No. LXCT5	PART No. LXCT6	PART No. LXCT7	PART No. LXCT8	DESCRIPTION	No. OFF
1	S01002	S01002	S01002	S01002	GEARBOX HOUSING S100	1
2	S02882	S02882	S02882	S02882	CARTRIDGE ROUND HVY DUTY WITH FLANGE	1
3	S01006	S01006	S01006	S01006	INPUT CARTRIDGE	1
4	S01009	S01009	S01009	S01009	INPUTSHAFT (w/-Recess August 2000 )	1
5	NA	S04607 (1:66)	S01005 (1:35)	S01105 (1:1)	GEAR INPUT ( RATIO )	1
5	S04618	NA	N/A	N/A	GEAR INPUT 2:1 RATIO	1
6	S01010	S01010	S01010	S01010	INNER BEARING	2
7	S01011	S01011	S01011	S01011	OUTER BEARING	1
8	S01012	S01012	S01012	S01012	OUTER SEAL	1
9	S01004 & S01004-1	S01004 & S01004-1	S01004 & S01004-1	S01004 & S01004-1	SHIMS (0.010" & 0.005" SPECIFY )	4-Jun
10	S01007	S01007	S01007	S01007	NYLOC NUT 1 1/4"	2
10A	S01008	S01008	S01008	S01008	WASHER 1 1/4"	2
11	S01016	S01016	S01016	S01016	KEY INPUT / OUTPUT	2
12	NA	S04608 (1:66)	S01005 (1:35)	S01105 (1:1)	PINION OUTPUT ( RATIO )	1
12	S04619 ( 2:1 )	NA	N/A	N/A	PINION 2:1 RATIO	1
13	S02295	S02295	S02295	S02295	BOTTOM BEARING H/DUTY	1
14	S02296	S02296	S02296	S02296	SEAL BOTTOM H/DUTY	1
15	S01015	S01015	S01015	S01015	INNER SEAL	1
16	--	--	S02883	S02883	OUTPUT SHAFT H/D 17 INCH LONG SERIES	1
16	S02883-1	S02883-1	--	--	OUTPUT SHAFT H/D HI-SPEED 17 INCH LONG SERIES	1
17	S01019	S01019	S01019	S01019	GRASS RING	1
18	S01003	S01003	S01003	S01003	NYLOC NUT 1/2"	12
19	S01017	S01017	S01017	S01017	LEVEL / DRAIN PLUG	2
20	S01018	S01018	S01018	S01018	FILLER / BREATHER PLUG	1
21	S04085	S04085	S04085	S04085	GREASE NIPPLE	1
22	S01999	S01999	S01999	S01999	GREASE NIPPLE EXTENSION	1
23	S04642	S05940 (1:66)	S05939 (1:35)	S05938 (1:1)	GEARBOX COMPLETE ( RATIO )	1
24	S02657	S02657	S02657	S02657	GEARBOX H/DUTY TOP BEARING 45284 /45220	1
25	S02658	S02658	S02658	S02658	GEARBOX TOP SEAL Suit Cartridge H/Duty	1

**CLUTCH ASSEMBLY S2000 (1 3/4" X 20 SPLINES)  
FOR LXCT5/LXCT6/LXCT7/LXCT8 CLEAN TOP SLASHERS**



ITEM #	PART NUMBER	PART NAME	QTY. OFF
1	S02334	BOLT 1/2" WHIT X 5" LONG	8
2	S04100	CLUTCH SPRING	8
3	S04103	CLUTCH SPIGOT BUSH 1 3/8" X 6 SPLINE	1
4	S04026	CLUTCH FRONT PLATE	1
5	S04027	CLUTCH LININGS	4
6	S06400	CLUTCH DRIVE PLATE	1
7	S02332	CLUTCH SPACER PLATE	1
8	S06401	CLUTCH SLIDING SPACER 1 3/4" X 20 SPLINES	1
9	S03205-1	NUT 1/2" WHIT	8
10	S06402	CLUTCH ASSEMBLY COMPLETE (1 3/4" X 20 SPLINES)	1



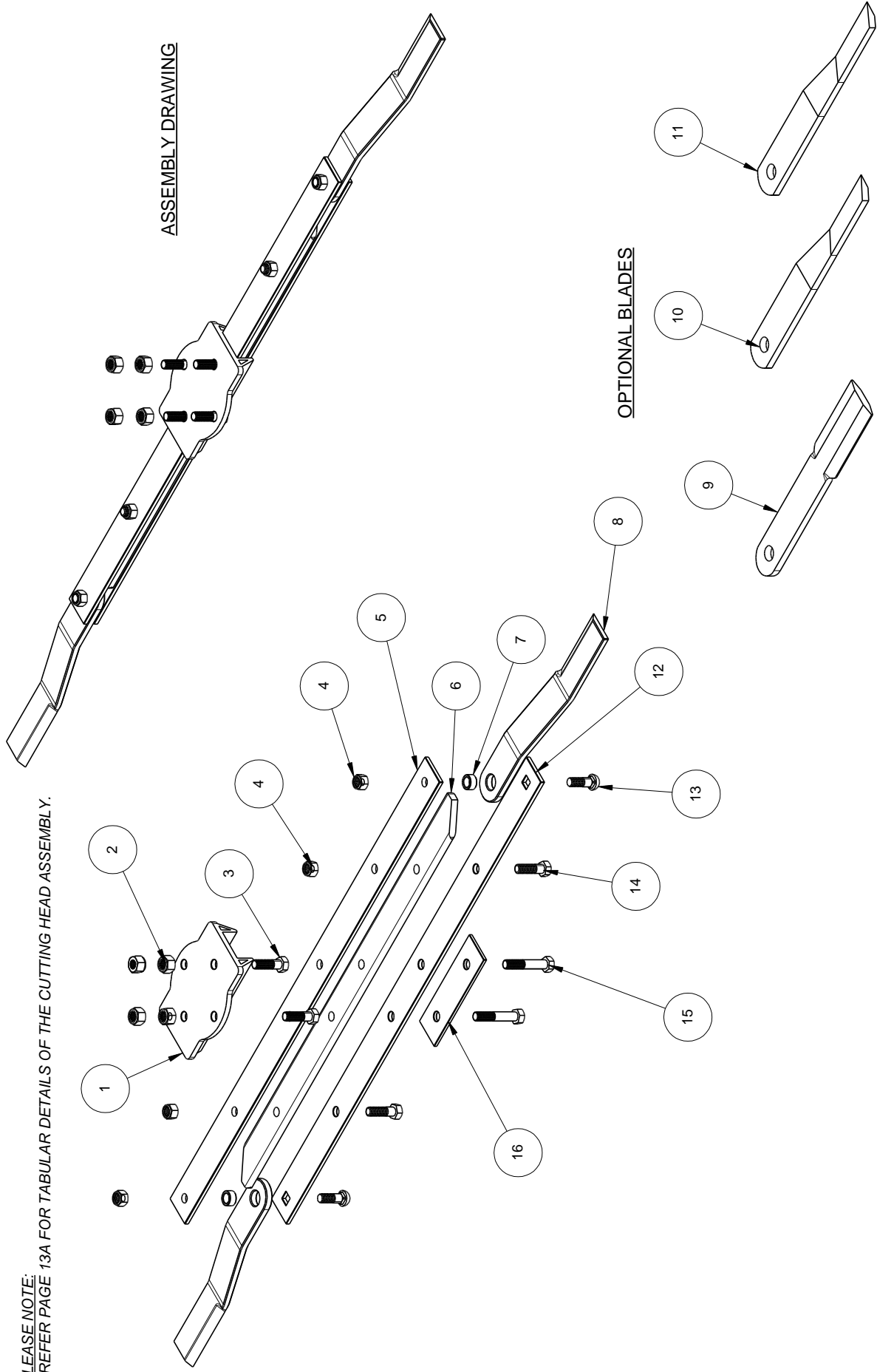
**DRIVESHAFTS A8 SERIES- LXCT5 / LXCT6 / LXCT7 / LXCT8  
(A7 SERIES IS OBSOLETE)**

ITEM No.	PART NO. 7 SERIES	PART No. 8 SERIES	DESCRIPTION	QTY. OFF.
1	S07070	S07415	DRIVESHAFT OUTER TUBE	1
2	S07069	S07416	DRIVESHAFT INNER TUBE	1
3	S07079	S07417	DRIVESHAFT TUBE YOKE (INNER)	1
4	S07073	S07418	DRIVESHAFT ROLL PIN MALE TUBE	2
5	S07081	S07419	DRIVESHAFT UNIVERSAL	2
6	S07068	S07420	DRIVESHAFT QR YOKE (1 3/8" X 6")	1
7	S07080	S07421	DRIVESHAFT TUBE YOKE (OUTER)	1
8	S07067	S07422	DRIVESHAFT PB YOKE ( 1 3/4 X 20 )	1
9	S07185	S07185	DRIVESHAFT COVER ASSEMBLY COMPLETE	1SET
10	S07074	S07414	DRIVESHAFT ROLL PIN FEMALE TUBE	1
11	S07065	S07427	DRIVESHAFT YOKE PIN, SPRING, WASHER	1
12	S07066	S07222	DRIVESHAFT COMPLETE (1 3/8" X 1 3/4" )	1



**CUTTING HEAD ASSEMBLY FOR LXCT5/ LXCT6/ LXCT7 SLASHERS**

PLEASE NOTE:  
\* REFER PAGE 13A FOR TUBULAR DETAILS OF THE CUTTING HEAD ASSEMBLY.



## CUTTING HEAD ASSEMBLY FOR LXCT5/LXCT6/LXCT7 SLASHERS

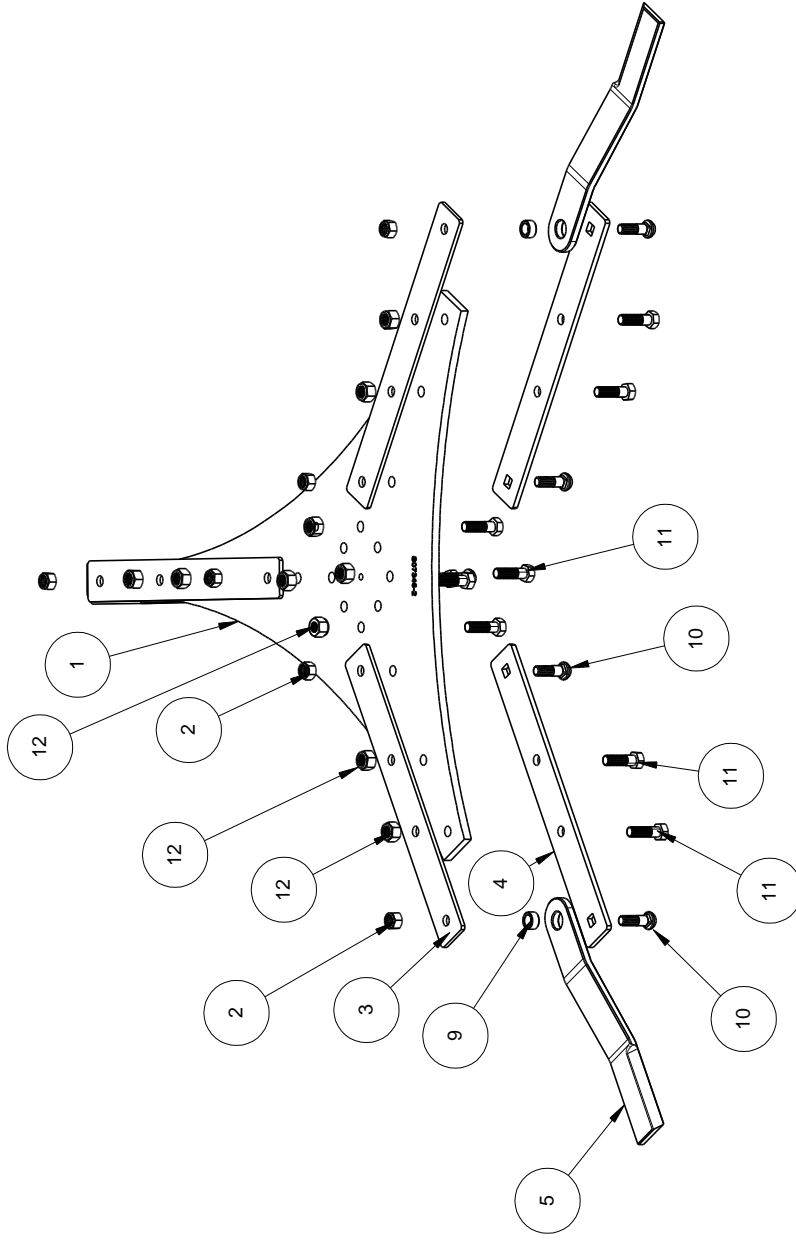
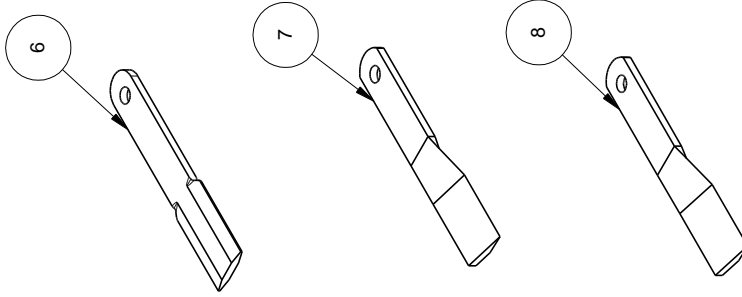
PLEASE NOTE:  
\* REFER PAGE 13 FOR ASSEMBLY DETAILS OF THE CUTTING HEAD ASSEMBLY.

ITEM #	PART # FOR LXCT5	PART # FOR LXCT6	PART # FOR LXCT7	PART NAME	QTY.	OFF
1	S05060	S05060	S05060	CUTTING HEAD BOX	1	
2	S04067	S04067	S04067	NYLOC NUT 3/4" UNF	4	
3	S03390	S03390	S03390	HEX BOLT 3/4" UNF X 2 1/2" LONG	2	
4	S05067	S05067	S05067	HEX NUT 3/4" UNC	4	
5	--	--	S07047	HEAD FLAT WITH ROUND HOLES 10MM X 75MM X 51"	1	
5	S04058	--	--	HEADFLAT WITH ROUND HOLES 75MM X 8MM X 27"	1	
5	--	S06054	--	HEADFLAT WITH ROUND HOLES 75MM X 8MM X 39"	1	
6	--	--	S07045	SPACER 16MM X 75MM X 43 INCH	1	
6	--	S06055	--	SPACER 75MM X 16MM X 31"	1	
6	S04059	--	--	SPACER 75MM X 8MM X 19"	1	
7	S05069	S05069	S05069	BLADE BUSH	2	
8	S05063	S05063	S05063	BLADE 75X16X 1 1/2" STEP	2	
9	S05062-1	S05062-1	S05062-1	BLADE STRAIGHT (OPTIONAL)	2	
10	S05064	S05064	S05064	BLADE LH SUCTION LIFT 75mm X 16MM X 20" LONG (OPTIONAL)	2	
11	S05061	S05061	S05061	BLADE LH SELF SHARPEN SUCTION LIFT 75MM X 16MM X 20" LONG (OPTIONAL)	2	
12	--	--	S07038	HEAD FLAT WITH SQUARE HOLES 10MM X 75MM X 51"	1	
12	--	S06056	--	HEADFLAT WITH SQUARE HOLES 75MM X 10MM X 39"	1	
12	S02112	--	--	HEADFLAT WITH SQUARE HOLES 75MM X 10MM X 27"	1	
12	--	--	S07063	HEAD FLAT WITH SQUARE HOLES 75MM X 16MM X 51" (OPTIONAL)	1	
13	S02115	S02115	S02115	DOME HEAD BOLT 3/4" UNC	2	
14	S04055	S04055	S04055	HEX BOLT 3/4" UNC X 2 1/2" LONG	2	
15	S05066	S05066	S05066	HEX BOLT 3/4" UNF X 4" LONG	2	
16	S04060	S04060	S04060	CUTTING HEAD RETAINER PLATE	1	
17	S07346-5	S07346-6	S07346-4	CUTTING HEAD ASSEMBLY COMPLETE ( EXCLUDING ITEM NO.1)	1	

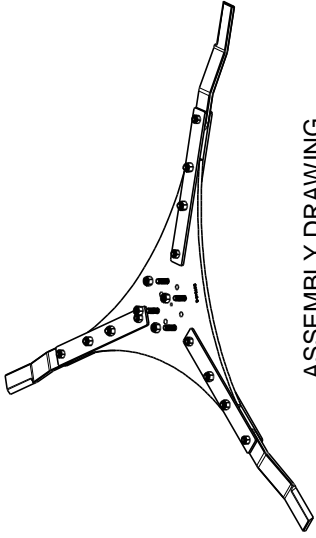
# CUTTING HEAD ASSEMBLY FOR LXCT8 SLASHERS

PLEASE NOTE:  
\* REFER PAGE 14A FOR TUBULAR DETAILS OF THE CUTTING HEAD ASSEMBLY.

## OPTIONAL BLADES



## ASSEMBLY DRAWING

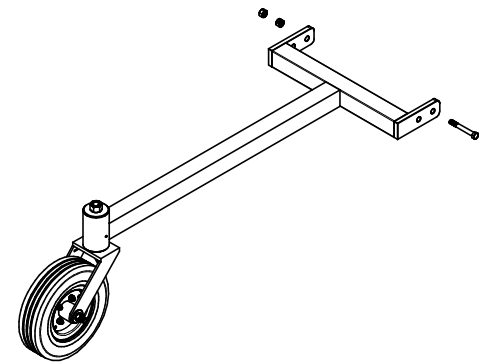
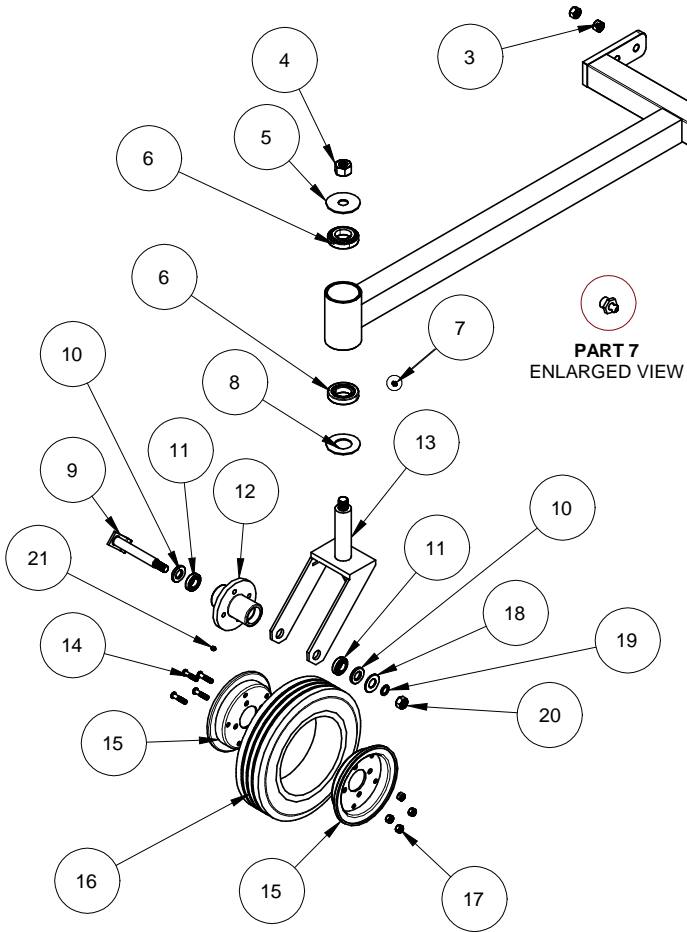


## CUTTING HEAD ASSEMBLY FOR LXCT8 SLASHERS

PLEASE NOTE:  
\* REFER PAGE 14 FOR ASSEMBLY DETAILS OF THE CUTTING HEAD ASSEMBLY.

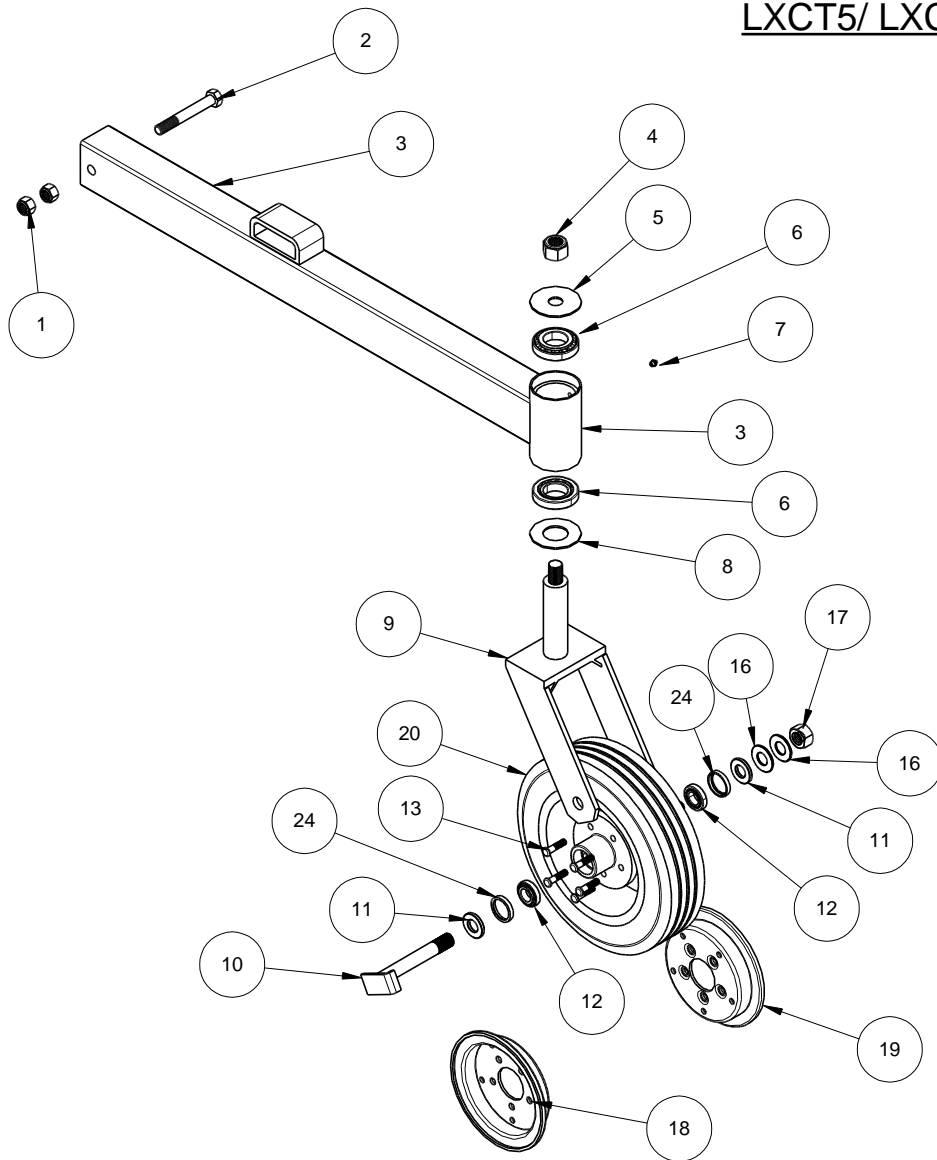
SL.NO.	PART NUMBER	PART NAME	QTY.OFF
1	S07346-2	TRIANGULAR CUTTING HEAD PLATE	1
2	S05067	HEX NUT 3/4" UNC	6
3	S02472	HEAD FLAT WITH ROUND HOLES 10MMX75MMX24"	3
4	S02471	HEAD FLAT WITH SQUARE HOLES 8MMX75MMX24"	3
5	S05063	BLADE STEPPED	3
6	S05062	BLADE STRAIGHT (20"X3"X5/8") (OPTIONAL)	3
7	S05064	BLADE SUCTION LIFT TWISTED (OPTIONAL)	3
8	S05061	BLADE SUCTION LIFT SELF SHARPENING (OPTIONAL)	3
9	S05069	BLADE BUSH	3
10	S02115	DOME HEAD BOLT 3/4" UNC	6
11	S03390	HEX BOLT 3/4 UNF x 2 1/2" LONG	10
12	S04067	3/4" UNF NYLOC NUT	10
13	S07346-3	CUTTING HEAD ASSEMBLY COMPLETE	1

**CASTOR ASSEMBLY WITH TWIN LEG FORK AND 4 STUD 400X8 WHEEL ASSEMBLY  
FOR LXCT5 AND LXCT6 CLEAN SKIN SLASHERS  
(STANDARD ASSEMBLY)**



SL.NO.	PART NUMBER	PART NAME	QTY. OFF
1	S07305	CASTOR MAIN BEAM	1
2	S03545	HEX BOLT 5/8" UNC X 5" LONG	1
3	S01033	HEX NUT 5/8" UNC	2
4	S01038	HEX NUT 1" UNF	1
5	S08159	WASHER OD 3 3/4" X ID 1"	1
6	S04646	TAPER ROLLER BEARING_30209	2
7	S04085	GREASE NIPPLE	2
8	S08158	WASHER OD 3 3/4" X ID 1 7/8"	1
9	S04082	WHEEL AXLE 1" DIA X 8" LONG	1
10	S04078	WASHER 1" X 1/4"THICK	2
11	S04084	SINGLE TPR BRG_L 44600-L 44610	2
12	S07251	HUB 4 STUD SUPERIOR	1
13	S04092-2	FORK DOUBLE LEG 400 X 8	1
14	S02237	WHEEL HUB STUD_7/16" UNF 1 1/2" LON	4
15	S07254	SPLIT RIM PLAIN 400X8_4 STUD	2
16	S07255	SOLID TYRE ITALIAN_400X8	1
17	S02225	HEX NUT 7/16" UNF	4
18	S04227	FLAT LIGHT WASHER 1"	1
19	S04226	WASHER 3/4" X 3mm THICK	1
20	S05067	HEX NUT 3/4" UNC	1
21	S04120	GREASE NIPPLE	1
22	S07253	WHEEL ASSEMBLY COMPLETE (INCLUDE SL.NO.10 TO 20)	1
23	S07247	WHEEL HUB ASSEMBLY COMPLETE (INLCUDE SLNO. 10 TO 14 AND 18 TO 20)	1

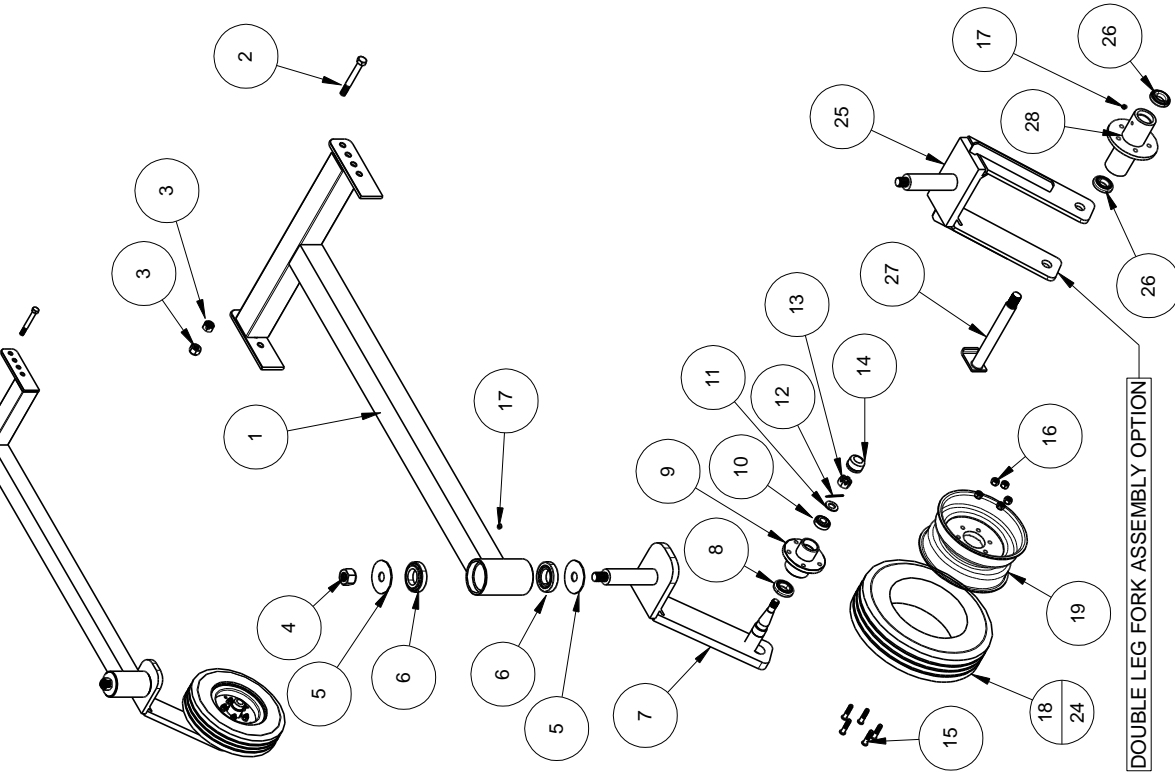
## CASTOR ASSEMBLY 400X8 - 5 STUD AND TYPE 3 BEAM LXCT5/ LXCT6/ LXCT7/ LXCT8



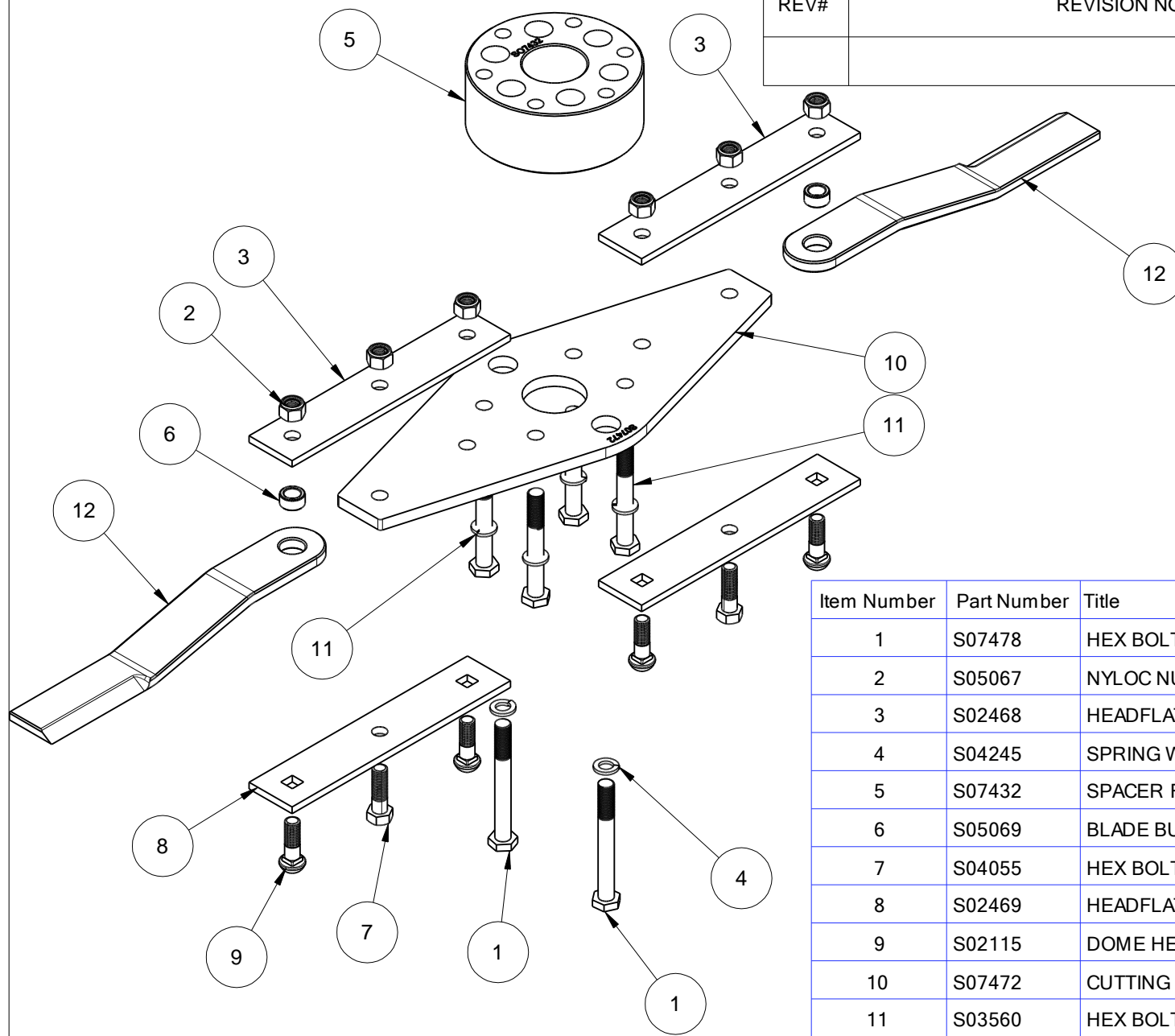
ITEM #	PART #	PART NAME	QTY. OFF
1	S05067	NYLOC NUT 3/4" UNC	2
2	S03559	HEX BOLT 3/4" UNC 5 1/2" LONG	1
3	S02379	CASTOR BEAMS TYPE 3	1
4	S01038	NYLOC NUT 1"UNF	1
5	S08159	WASHER OD 3 3/4" X ID 1"	1
6	S04646	TAPER ROLLER BEARING_30209	2
7	S04085	GREASE NIPPLE STRT 1/8" BSP	1
8	S08158	WASHER OD 3 3/4" X ID 1 7/8"	1
9	S04092-2	FORK DOUBLE LEG 400 X 8 1 3/4" SHAFT	1
10	S04082	WHEEL AXLE 1" DIA X 8" LONG X 1" THREAD	1
11	S04078	WHEEL SPACER 1" X 1/4" THICK	2
12	S04084	SINGLE TPR BRG_L 44600-L 44610	2
13	S02237	WHEEL HUB STUD_7/16" UNF 1 1/2" LONG	5
14	S05080	HUB 5 STUD SUPERIOR	1
15	S02225	HEX NUT 7/16" UNF	5
16	S04227	FLAT LIGHT WASHER 1"	2
17	S01039	HEX NUT 1" UNC	1
18	S05078	SPLIT RIM PLAIN 400X8_5 STUD	1
19	S05079	SPLIT RIM EMBOSSED 400X8_5 STUD	1
20	S05077	SOLID TYRE ITALIAN_400X8	1
21	S05083	WHEEL HUB ASSEMBLY	1
22	S04075	WHEEL ASSEMBLY	1
23	S08264	CASTOR ASSEMBLY COMPLETE TYPE3 & 400X8	1
24	S02222-1	S02222-1_SEAL EURATHANE SUIT WHEEL BEAF	2

**CASTOR ASSEMBLY SINGLE LEG FORK / DOUBLE LEG FORK & 5 STUD 500X10 WHEEL ASSEMBLY FOR LXCT5/ LXCT6/ LXCT7/ LXCT8 CLEAN TOP SLASHERS**  
(OPTIONAL ASSEMBLIES)


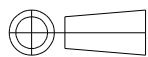

ITEM #	PART #	PART NAME	QTY.	OFF
1	S07345	CASTOR BEAM (TYPE 5)	1	
2	S03545	HEX BOLT 5/8" UNC 5" LONG	1	
3	S01033	HEX NUT 5/8" UNC	2	
4	S01038	HEX NUT 1" UNF	1	
5	S08159	WASHER OD 3 3/4" X ID 1"	2	
6	S04646	BEARING TAPERED ROLLER_30209	2	
7	S04117-1	FORK SINGLE LEG SUIT 500X10 WHEEL	1	
8	S02223	BEARING TAPERED ROLLER_LM 67048-LM 67000	1	
9	S02224	HUB 5 STUD HOLDEN SUIT SINGLE LEG FORK	1	
10	S02229	BEARING TAPERED ROLLER_LM 11949-10	1	
11	S04226	WASHER 3/4" X 3mm THICK	1	
12	S02233	SPLIT PIN	1	
13	S02231	HEX SLOTTED NUT 3/4" UNF	1	
14	S02232	DUST CAP	1	
15	S02237	WHEEL HUB STUD_7/16" UNF 1 1/2" LONG	5	
16	S02225	HEX NUT 7/16" UNF	5	
17	S04085	GREASE NIPPLE	1	
18	S02152	WHEEL TYRE 500X10"	1	
19	S02273	RIM 10" ALLOY 5 STUD	1	
20	S04269	WHEEL ASSEMBLY- TYRE & RIM 520 X 10 ALLOY 5 STUD MONOFILLED	1	
21	S08175	WHEEL HUB ASSEMBLY 500X10 SUIT SINGLE LEG FORK	1	
22	S08176	WHEEL ASSEMBLY 500X10 SUIT SINGLE LEG FORK	1	
23	S08177	CASTOR BEAM & WHEEL ASSEMBLY 500X10 SUIT SINGLE LEG FORK	1	
0		OPTIONAL 600X14 WHEEL 6 STUD DOUBLE LEG FORK -GIVEN BELOW)		
24	S02226-1	WHEEL - TYRE AND RIM 6 STUD 600X14 SPECIAL	1	
25	S01688-3	FORK DOUBLE LEG SUIT 600X14 WHEEL	1	
26	S02223	BEARING TAPERED ROLLER_LM 67048-LM 67000	2	
27	S01688-2	AXLE SUIT 600X14 DOUBLE LEG FORK	1	
28	S01688-1	HUB 6 STUD 600X14 SUIT DOUBLE LEG FORK	1	
29	S02228-2	WHEEL HUB ASSEMBLY 600x14 SUIT DOUBLE LEG FORK	1	
30	S02228-3	WHEEL ASSEMBLY 600x14 SUIT DOUBLE LEG FORK	1	
31	S02228-4	CASTOR BEAM & WHEEL ASSEMBLY 600x14 SUIT DOUBLE LEG FORK	1	



REV#	REVISION NOTE	DATE	SIGN	CHECKED



Item Number	Part Number	Title	Quantity
1	S07478	HEX BOLT 3/4" UNC x 6 3/4" LG HT	2
2	S05067	NYLOC NUT 3/4" UNC	6
3	S02468	HEADFLAT 10X75X381mm	2
4	S04245	SPRING WASHER 3/4"	6
5	S07432	SPACER FOR CUTTING HEAD SUIT BARE-CO GEARBOX 90 HIGH	1
6	S05069	BLADE BUSH 16 mm THK.	2
7	S04055	HEX BOLT 3/4" UNCX 2 1/2" LONG	2
8	S02469	HEADFLAT 10X75X381mm	2
9	S02115	DOME HEAD BOLT 3/4" UNC x 2 3/8" LONG	4
10	S07472	CUTTING HEAD PLATE 16mm_6FT	1
11	S03560	HEX BOLT 3/4" UNC x 6" LG	4
12	S05063	75 x 16 BLADE 1 1/2" STEP	2

MATERIAL	TOLERANCE	USED ON LXCT6	CHECKED BY	DRAWN BY	DATE	SCALE	 <b>SUPERIOR EQUIPMENT PTY LTD</b> 19 QUINDUS ST. WACOL QLD 4076 PH. 07-3271 3177
HARDNESS	UNIT	PROJECTION	TITLE				
JIG#	DO NOT SCALE WORK TO DIMENSIONS IF IN DOUBT PLEASE ASK		<b>CUTTING HEAD ASSY LXCT6B</b>			DRAWING NO./ PART NO. <b>S07474</b>	
FILE PATH:			REV# 			PAGE 1 of 1	



**LXCT5 / LXCT6 / LXCT7 / LXCT8**  
**CLEAN SLASHERS**

**WARRANTY**

Your Superior Product is covered by **Manufacturers Warranty of 180 days** against faulty parts and or workmanship. Warranty does not cover operator abuse, or damage to the cutting head assembly (head flats, blades etc.) Should a warranty type problem develop with your new Mower **contact your local dealer** who will refer the problem to SUPERIOR EQUIPMENT. Items for any warranty inspection must be **forwarded on a pre-paid basis. Goods supplied are on a charge basis, subject to warranty inspection.**

(See page 1 for Corporate Philosophy / Warranty / Liability)

<b>OWNERS NOTES</b>
---------------------

<b>Model:</b>	<b>Serial No.</b>
---------------	-------------------

<b>LUBRICATION DATES</b>
--------------------------


-

<b>SPARE PARTS REFERENCES</b>
-------------------------------
